

RECEIVED

JUN 20 2002

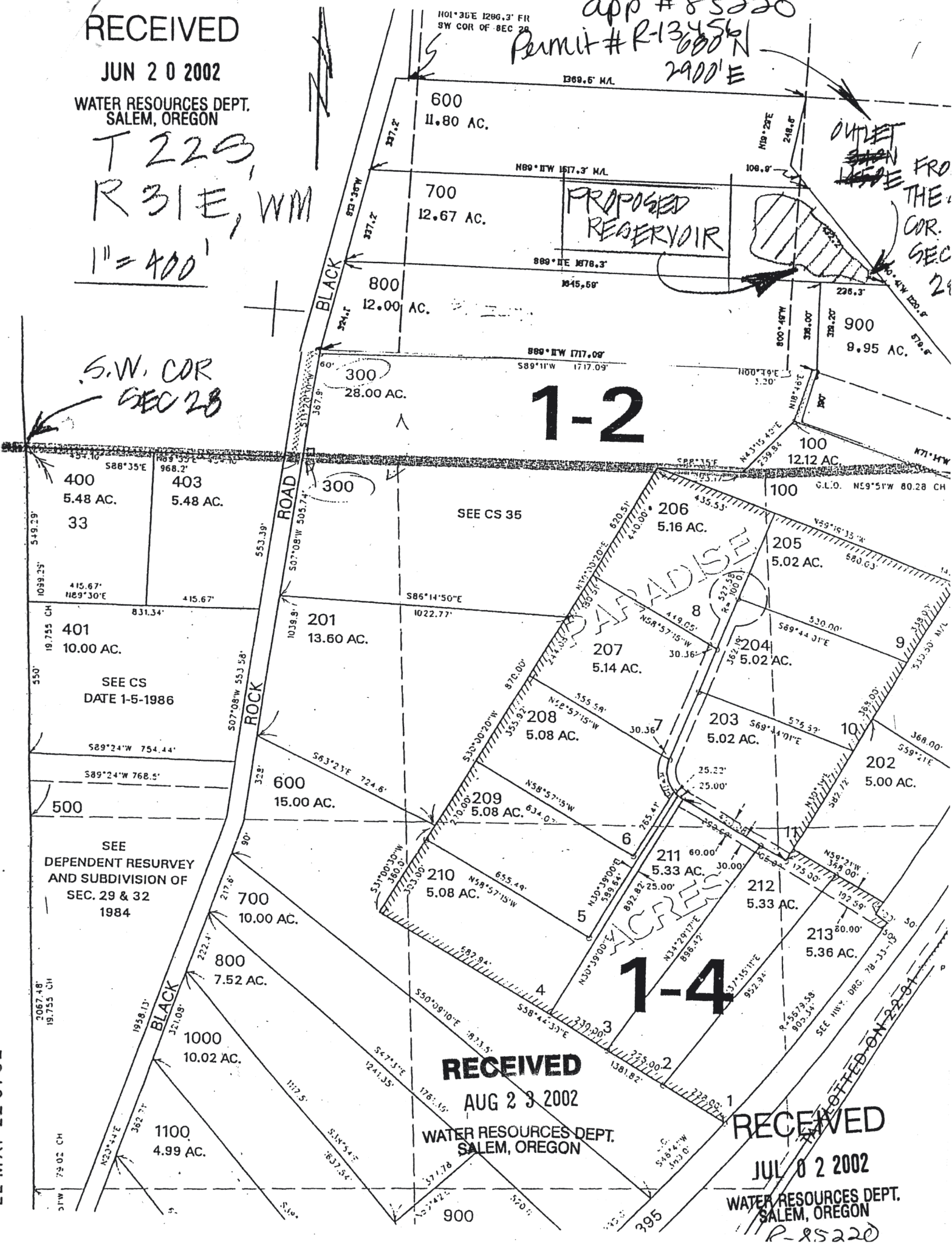
WATER RESOURCES DEPT.
SALEM, OREGON

T 22S,
R 31E, WM

1" = 400'

S.W. COR
SEC 28

app # 85220
Permit # R-13456
600' N
2900' E



1-2

1-4

RECEIVED

AUG 23 2002

WATER RESOURCES DEPT.
SALEM, OREGON

RECEIVED

JUL 02 2002

WATER RESOURCES DEPT.
SALEM, OREGON

R-85220

OUTLET FROM THE COR. SEC 28

NOTED ON 2-2-81

4
3
2
1