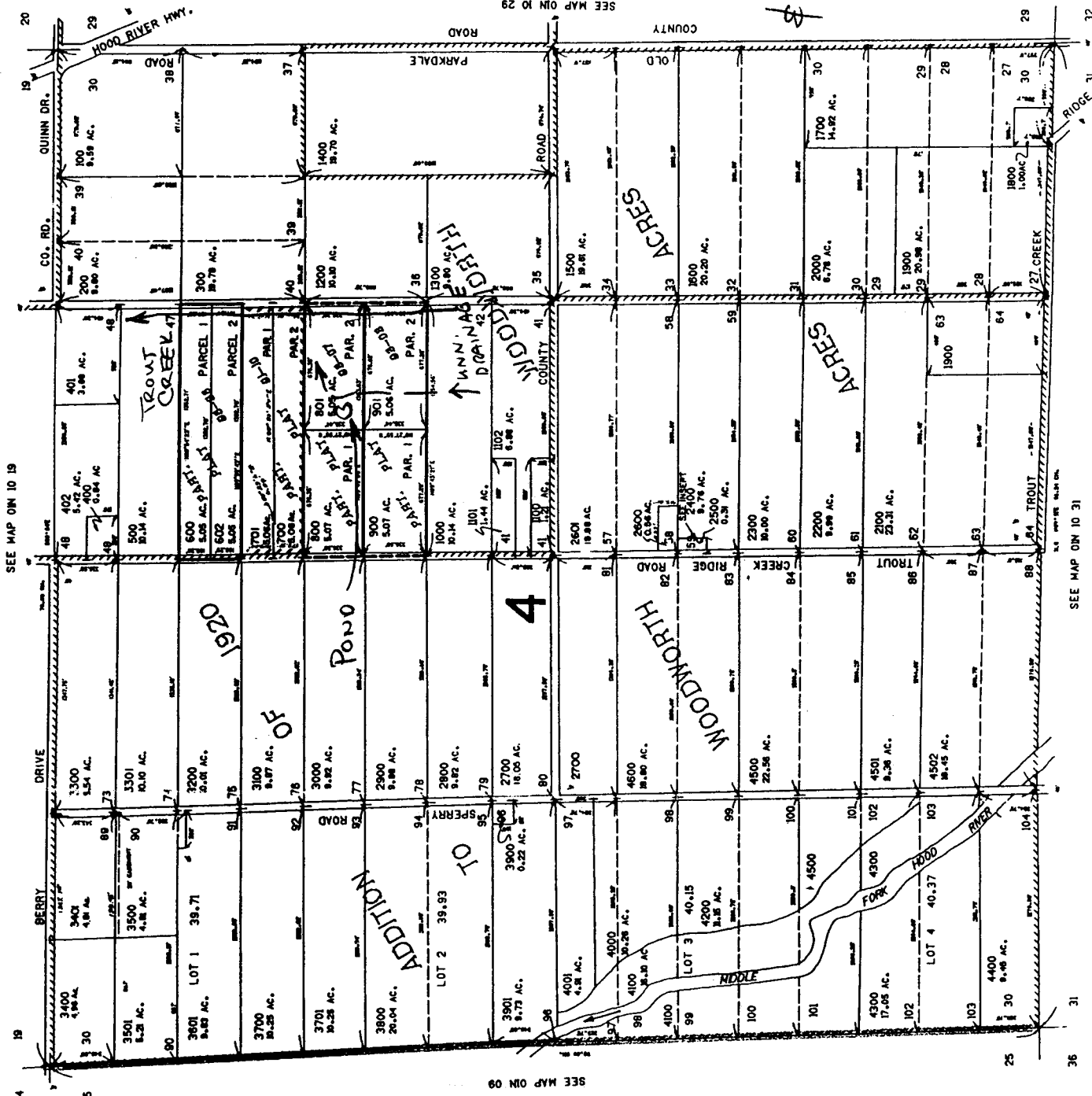


ASSESSMENT PURPOSE ONLY

HOOD RIVER COUNTY

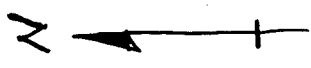
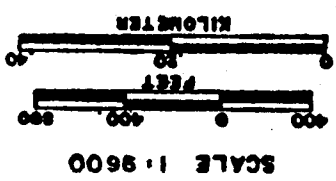
1" = 800 FT.



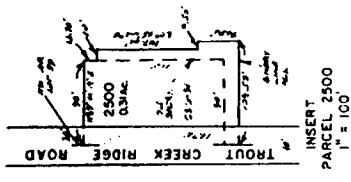
SEE MAP ON 10 19

SEE MAP ON 09

SEE MAP ON 10 31



CANCELLED NO.'S
 601
 3600
 4700



SEE MAP ON 29

LOCATION OF ROAD
 FROM CENTER SEC. 30
 1120 FT NORTH
 750 FT EAST

RECEIVED
 SEP 04 2002
 WATER RESOURCES DEPT.
 SALEM, OREGON

Application No. R-85284
 Permit No. R-13464