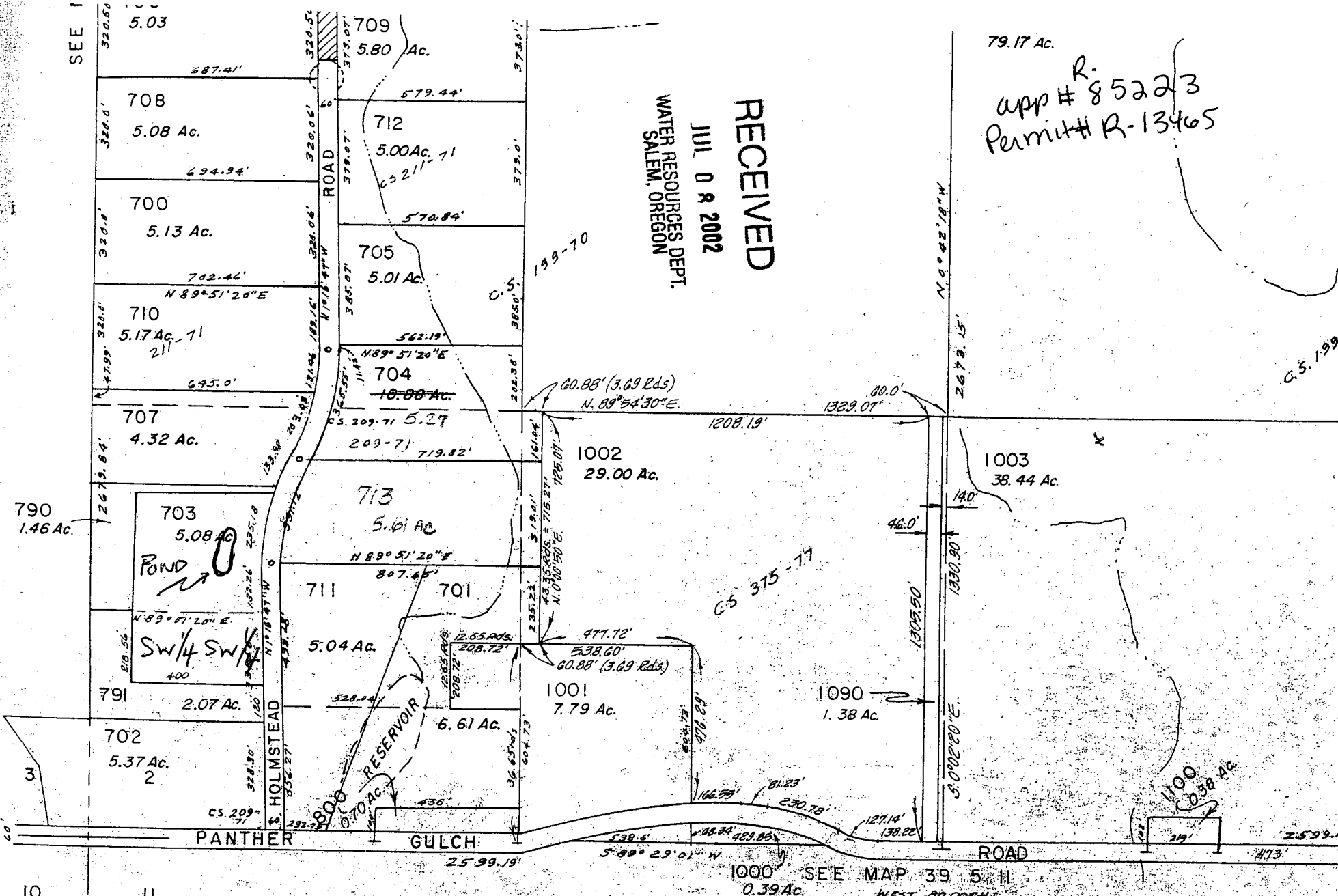


SEE 1



RECEIVED  
 JUL 08 2002  
 WATER RESOURCES DEPT.  
 SALEM, OREGON

app # 85223  
 Permit # R-13465

79.17 Ac.

POUND LOCATED FROM  
 COMMON SECTION CORNERS  
 2, 3, 10, 11.  
 400 FT EAST  
 870 FT NORTH

39-5-2

1" = 400'

SCALE



R-85223