

10 S-4 W - 18

Tax Lot: 800

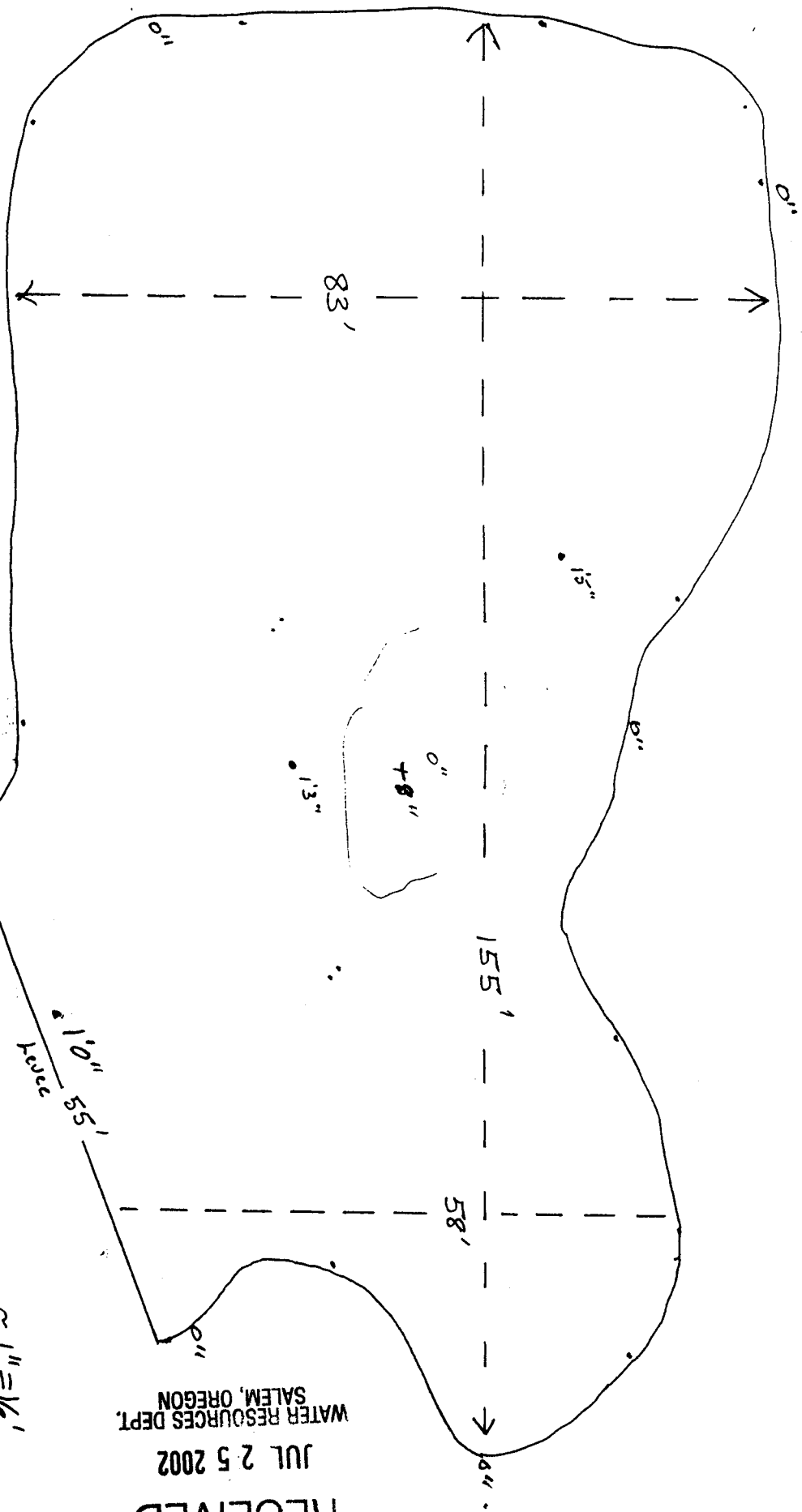
SE of NW quarter

SITE #2 Co. Eff. Bu. the
OLD QUARRY

Latitude 44° 42' 13.8"

Longitude 123° 13' 37.2"

North
↑



RECEIVED
JUL 25 2002
WATER RESOURCES DEPT.
SALEM, OREGON

Application No. 5-85246
Permit No. R-13489

AREA FLOODED WITH WATER DEPTH 2' AT LEVEE (Full Pool)

LEVEE HT = 2' AREA FLOODED 0.2 ACRES

RESERVOIR STORAGE AT FULL DAM - 0.129 ACRES FIRST

RECEIVED

JUL 25 2002

WATER RESOURCES DEPT.
SALEM, OREGON

11-400

S-85246
R-13489

Application No
Plan No

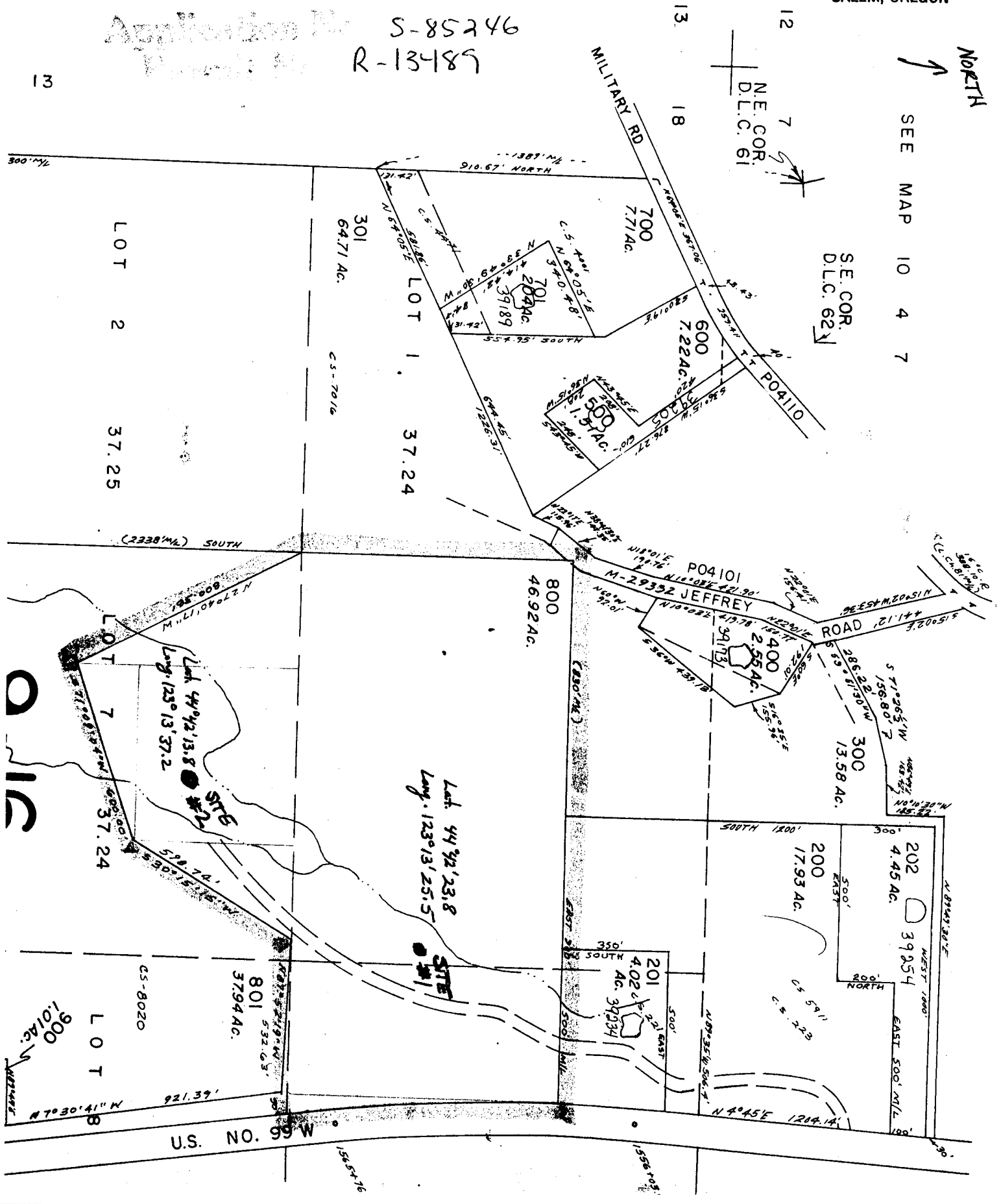
13

NORTH

SEE MAP 10 4 7

S.E. COR.
D.L.C. 62

N.E. COR.
D.L.C. 61



200
100

LOT 8
900
1.01 AC.

LOT 2
37.25

LOT 1
37.24

LOT 7
37.24

800
46.92 AC.

700
7.71 AC.

500
1.51 AC.

600
7.22 AC.

200
17.93 AC.

200
4.45 AC.

300
13.58 AC.

400
2.55 AC.

U.S. NO. 99 W

MILITARY RD

JEFFREY ROAD

13
18

12
7

(2338' W) SOUTH

SOUTH 1200'

500'

500'

500'

500'

500'

500'

500'

500'

500'

500'

500'

500'

500'

RECEIVED

JUL 25 2002

WATER RESOURCES DEPT.
SALEM, OREGON

11-400

S-85246

R-13489

NORTH

SEE MAP 10 4 7

SE. COR.
D.L.C. 62

NE. COR.
D.L.C. 61

