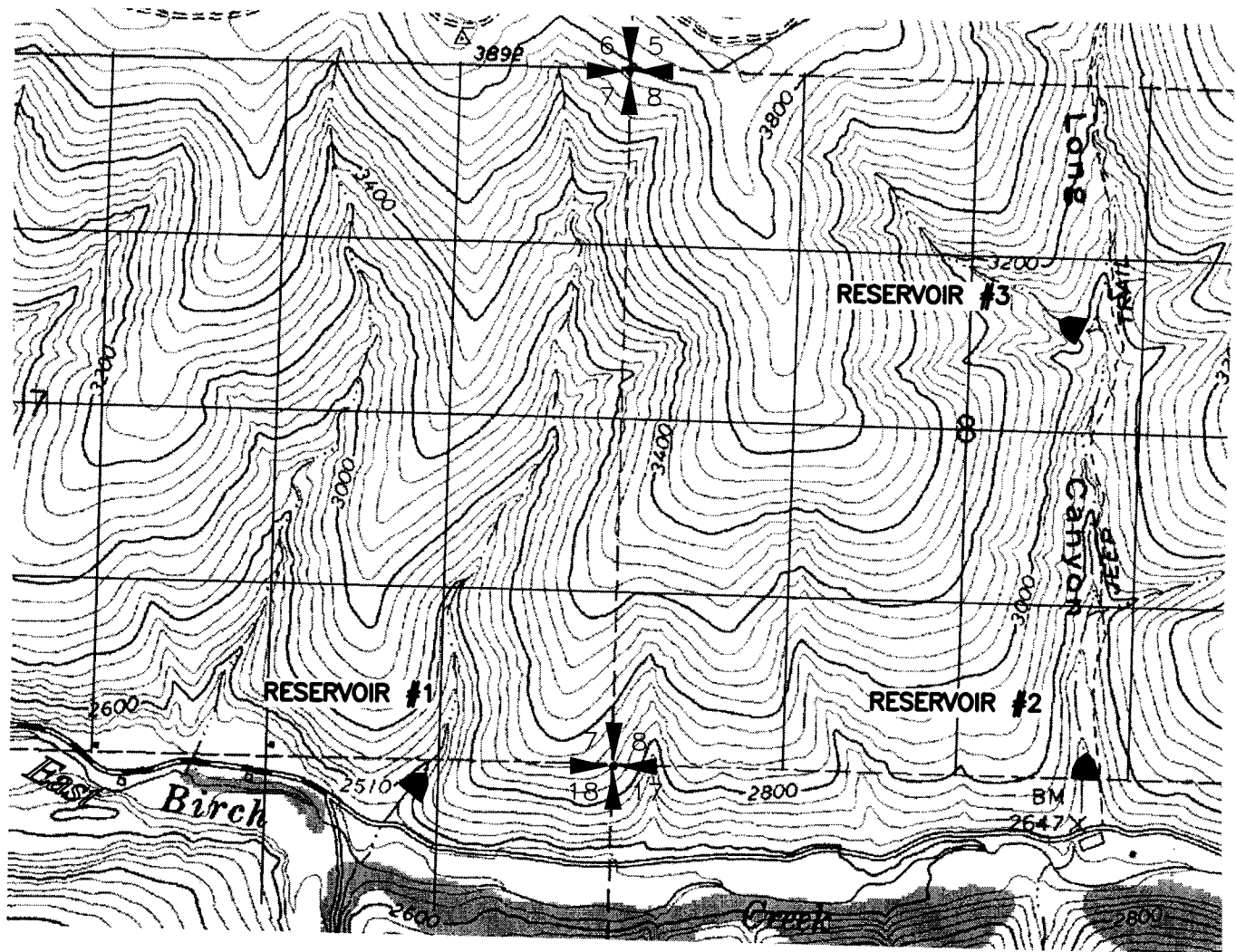


app # R-85298 CUNNINGHAM SHEEP CO.
 Permit # R-15503 APPLICATION MAP FOR 3 SMALL
 WATER STORAGE RESERVOIRS
 T 2S, R 33E., WM
 UMATILLA COUNTY

RECEIVED
 SEP 23 2002
 WATER RESOURCES DEPT
 SALEM, OREGON

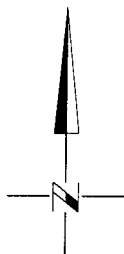


RESERVOIR LOCATIONS - ALL LOCATED IN TAX LOT 1600

#1 250' S AND 1550' W FROM THE NE CORNER OF SECTION 18, BEING IN THE NW 1/4 OF THE NE 1/4 OF SECTION 18

#2 50' N AND 3850' E FROM THE SW CORNER OF SECTION 8, BEING IN THE SW 1/4 OF THE SE 1/4 OF SECTION 8

#3 3400' N AND 3550' E FROM THE SW CORNER OF SECTION 8, BEING IN THE SW 1/4 OF THE NE 1/4 OF SECTION 8



0 1320 2640



SCALE IN FEET

RESERVOIR

NOTE:
 THE PURPOSE OF THIS MAP IS TO IDENTIFY THE APPROXIMATE LOCATION OF THE WATER RIGHT. IT IS NOT INTENDED TO PROVIDE INFORMATION RELATIVE TO THE LOCATION OF PROPERTY OWNERSHIP BOUNDARY LINES.

9/09/02
 3522.083
 352283RES.DWG



Consultants, Inc.

Architects & Engineers
 Kennewick, WA 99336