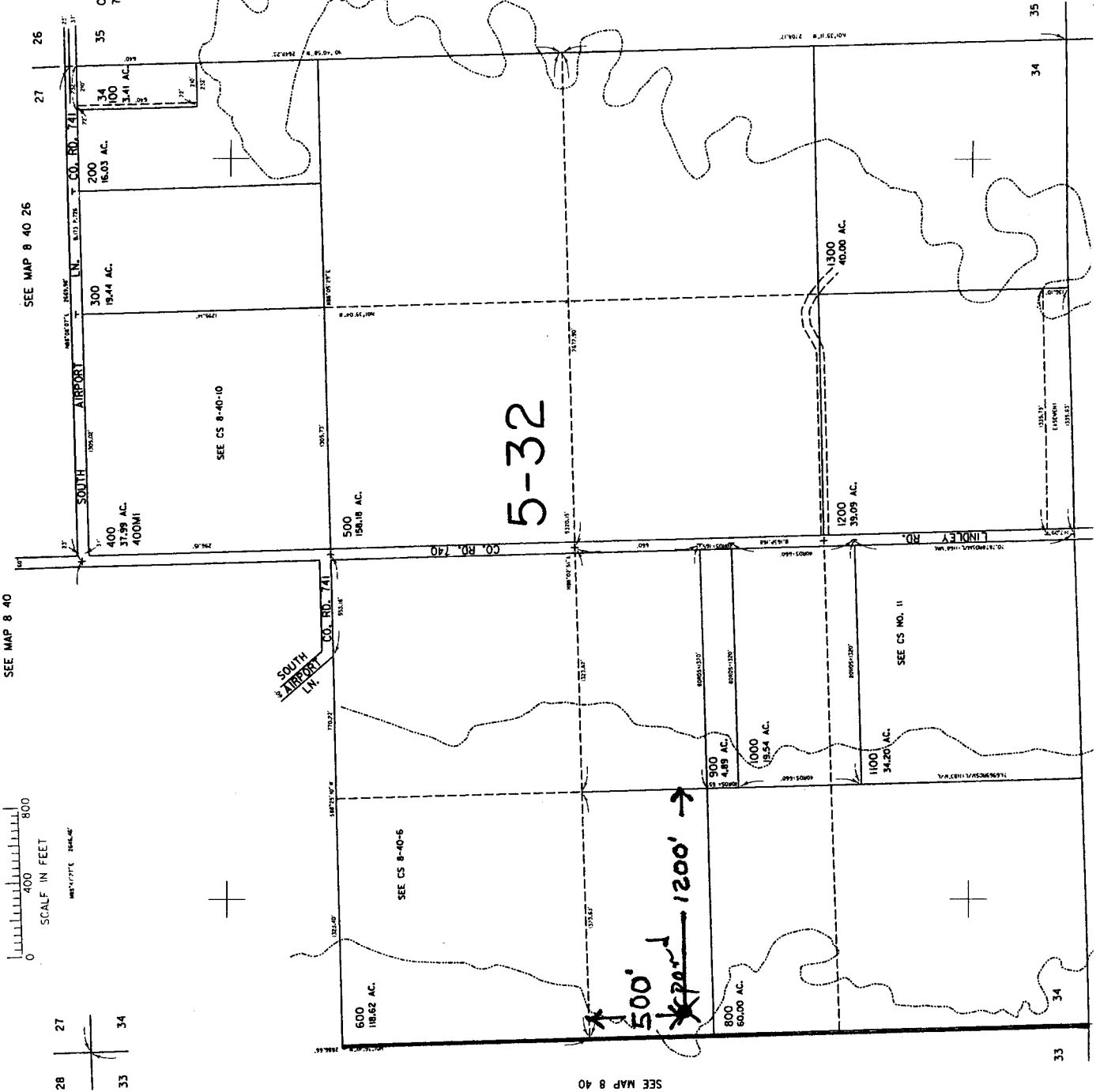
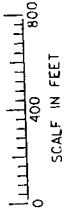


8 40 34

SECTION 34 T.8S. R.40E. W.M.  
BAKER COUNTY  
1"=800'

THIS MAP WAS PREPARED FOR  
ASSESSMENT PURPOSE ONLY



SEE MAP 8 40 26

SEE MAP 8 40

SEE MAP 8 40 35

SEE MAP 8 40

RECEIVED

JUL 25 2002

WATER RESOURCES DEPT.  
SALEM, OREGON

432.000

Revised  
2/27/01, CS

Application No. R-85260  
Permit No. R-13513

RECEIVED

AUG 05 2002

WATER RESOURCES DEPT.  
SALEM, OREGON