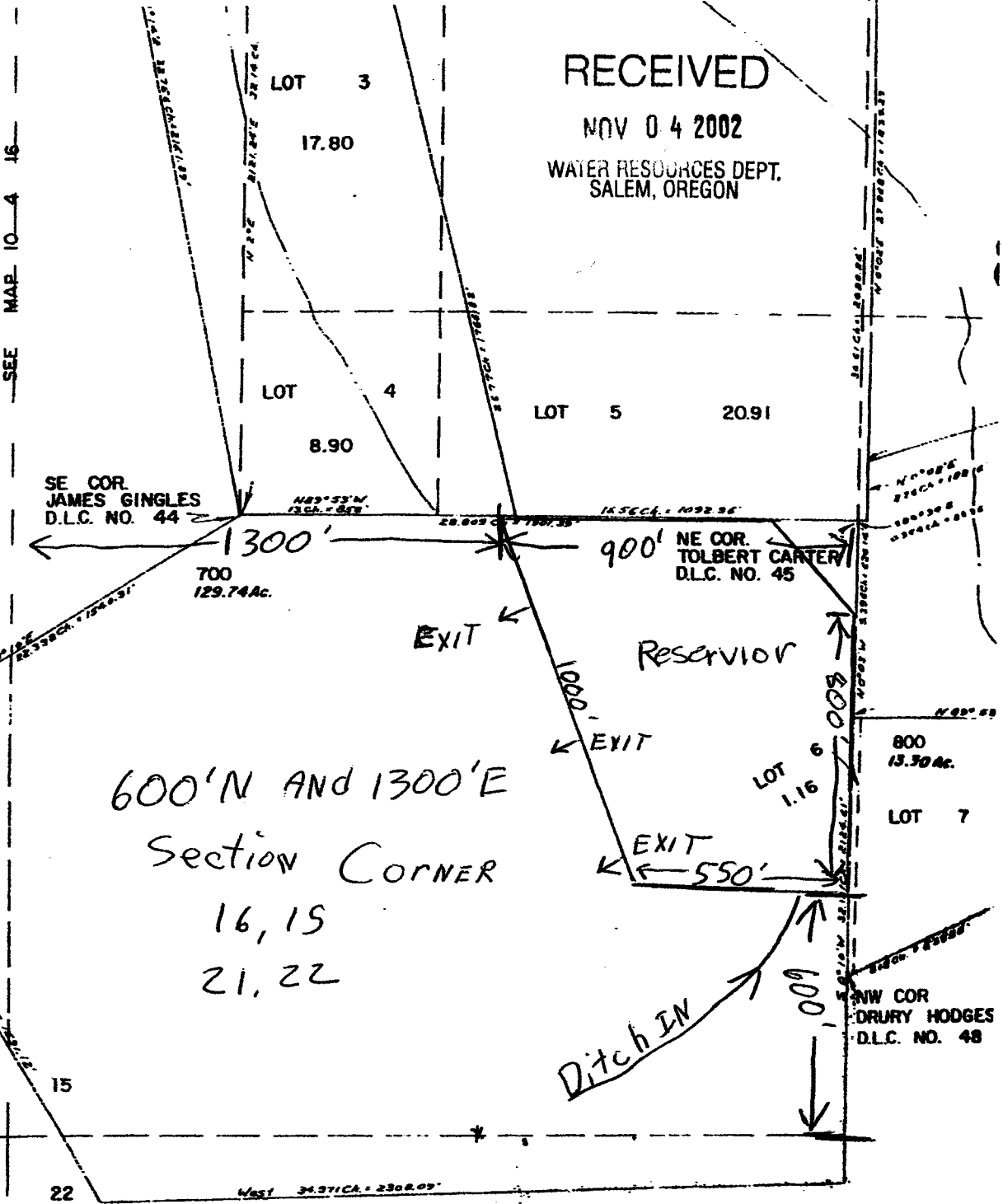


RECEIVED

NOV 04 2002

WATER RESOURCES DEPT.  
SALEM, OREGON

zpp# R-85331  
zermitt # R-13528

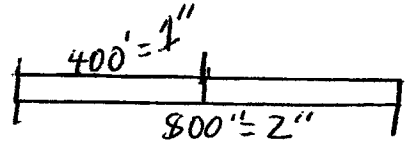


SE COR. JAMES GINGLES  
D.L.C. NO. 44

NE COR. TOLBERT CARTER  
D.L.C. NO. 45

NW COR. DRURY HODGES  
D.L.C. NO. 48

600' N AND 1300' E  
Section CORNER  
16, 15  
21, 22



SEE MAP 10 4 22

19 1/2 A/c/ft

Township-10S; Range-4W; Section-15;  
Q/Q-SW; Tax Lot # 700