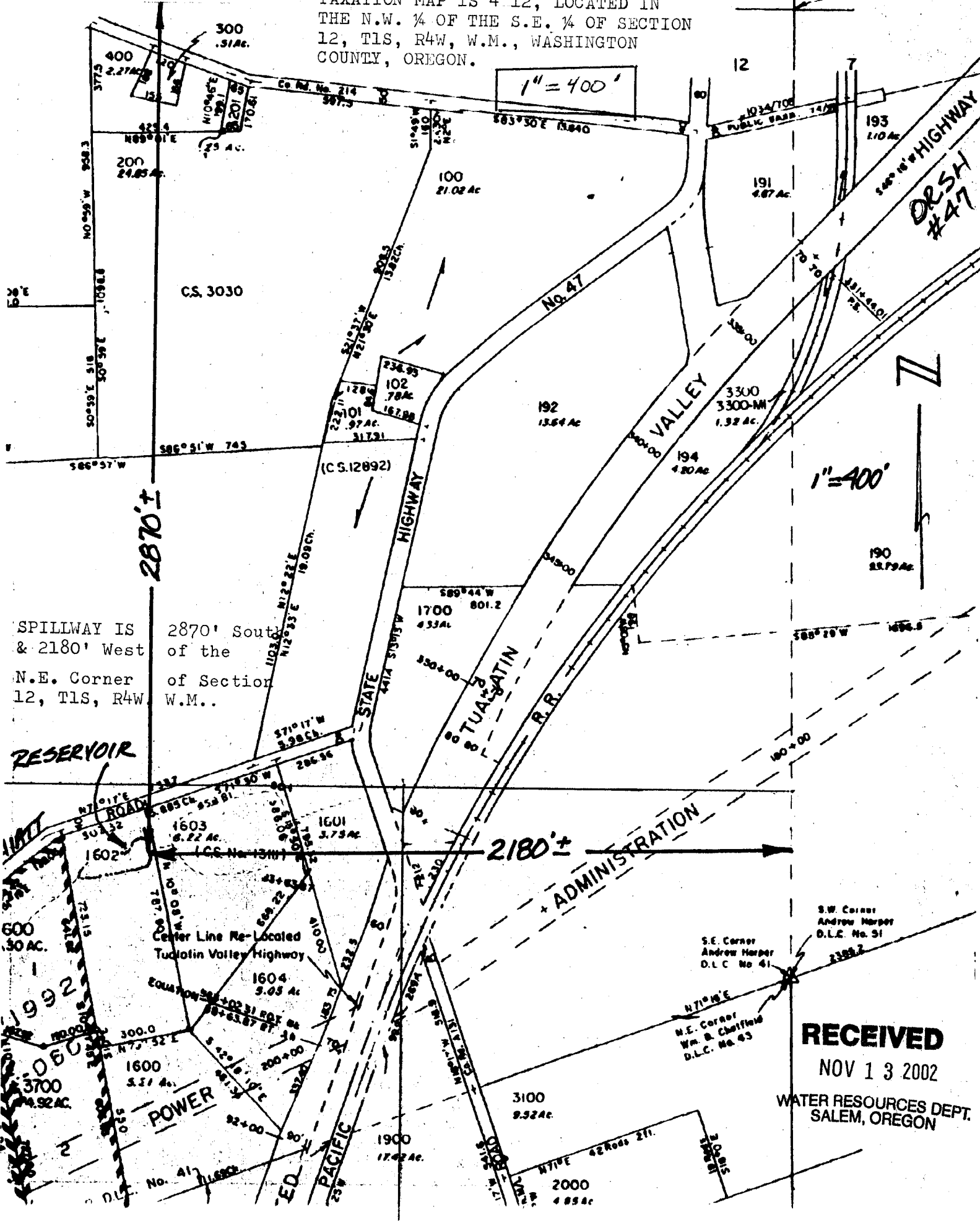


25338  
K-13533

MAP SHOWING LOCATION OF RESERVOIR  
ON TAX LOT 1602, ASSESSMENT AND  
TAXATION MAP 1S 4 12, LOCATED IN  
THE N.W. 1/4 OF THE S.E. 1/4 OF SECTION  
12, T1S, R4W, W.M., WASHINGTON  
COUNTY, OREGON.

1 6  
Approx. Sec. Corner



SPILLWAY IS 2870' South  
& 2180' West of the  
N.E. Corner of Section  
12, T1S, R4W W.M..

RESERVOIR

2180'

ADMINISTRATION

POWER

RECEIVED

NOV 13 2002

WATER RESOURCES DEPT.  
SALEM, OREGON

S.W. Corner  
Andrew Harper  
D.L.C. No. 51

S.E. Corner  
Andrew Harper  
D.L.C. No. 41

N.E. Corner  
Wm. B. Chaffield  
D.L.C. No. 43

D.L.C. No. 41

N71°16'E 42 Rods 21i.

2000 4.854 Ac

1" = 400'

1" = 400'

ORSH #47