

Application No. R-84784  
 Permit No. R-13550

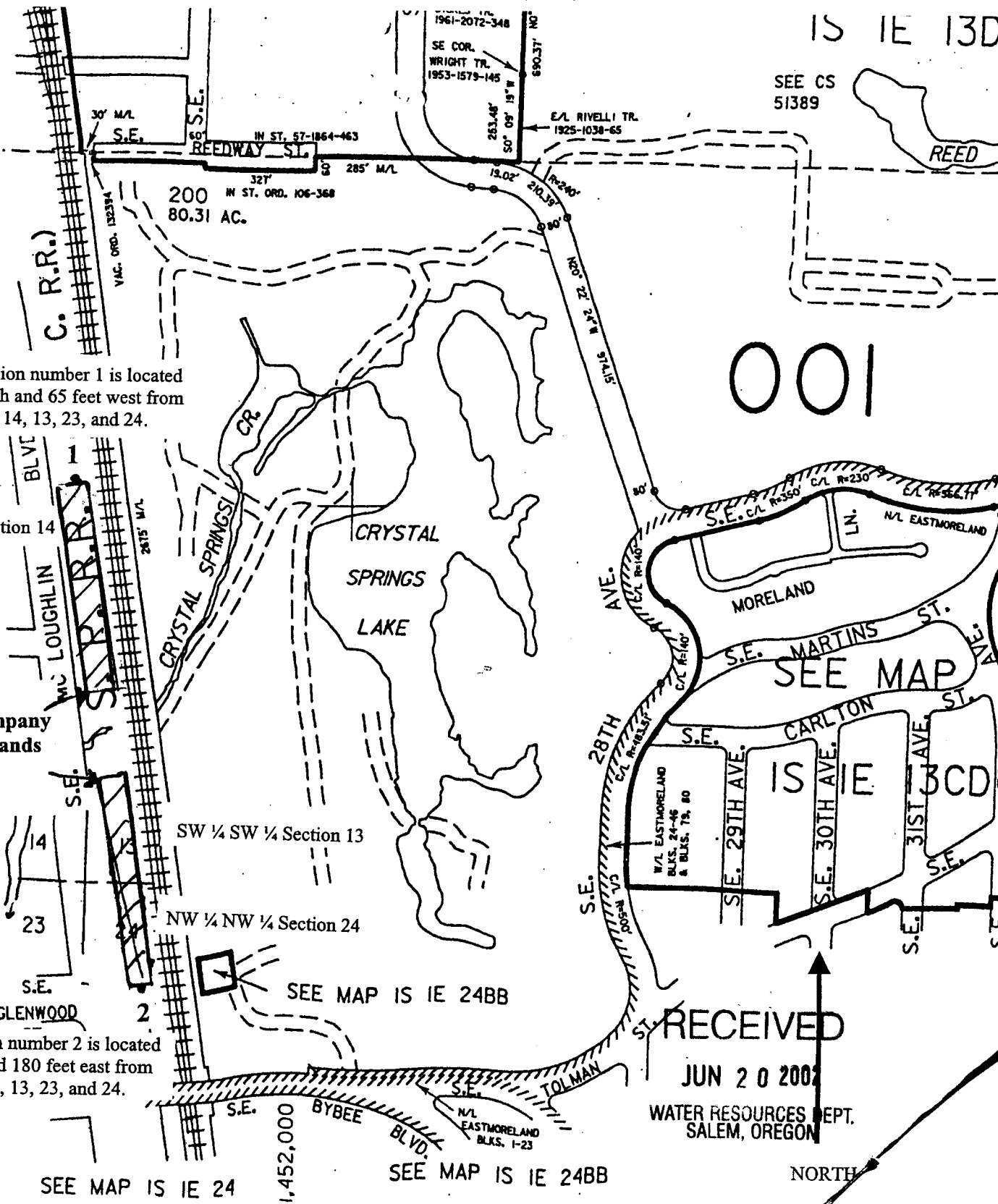
RECEIVED

JUN 18 2001

WATER RESOURCES DEPT.  
 SALEM, OREGON

APPLICATION MAP  
 IN THE NAME OF UNION PACIFIC RAILROAD COMPANY

SECTIONS 13, 14, and 24 T1S, R1E, W.M.



SEE MAP IS IE 14DA

Point of diversion number 1 is located 1,150 feet north and 65 feet west from Section corner 14, 13, 23, and 24.

SE 1/4 SE 1/4 Section 14

Union Pacific  
 Railroad Company  
 Created Wetlands  
 3.1 Acres  
 June 2000

Point of diversion number 2 is located 290 feet south and 180 feet east from Section corner 14, 13, 23, and 24.

SEE MAP IS IE 24

SEE MAP IS IE 24BB

001

SEE MAP

RECEIVED

JUN 20 2001

WATER RESOURCES DEPT.  
 SALEM, OREGON

NORTH

Source: Multnomah County Tax Assessor, Map for Section 13 T1S, R1E, W.M. 2000.

Scale: