

Map 1 of 2

SEE MAP 4N 37

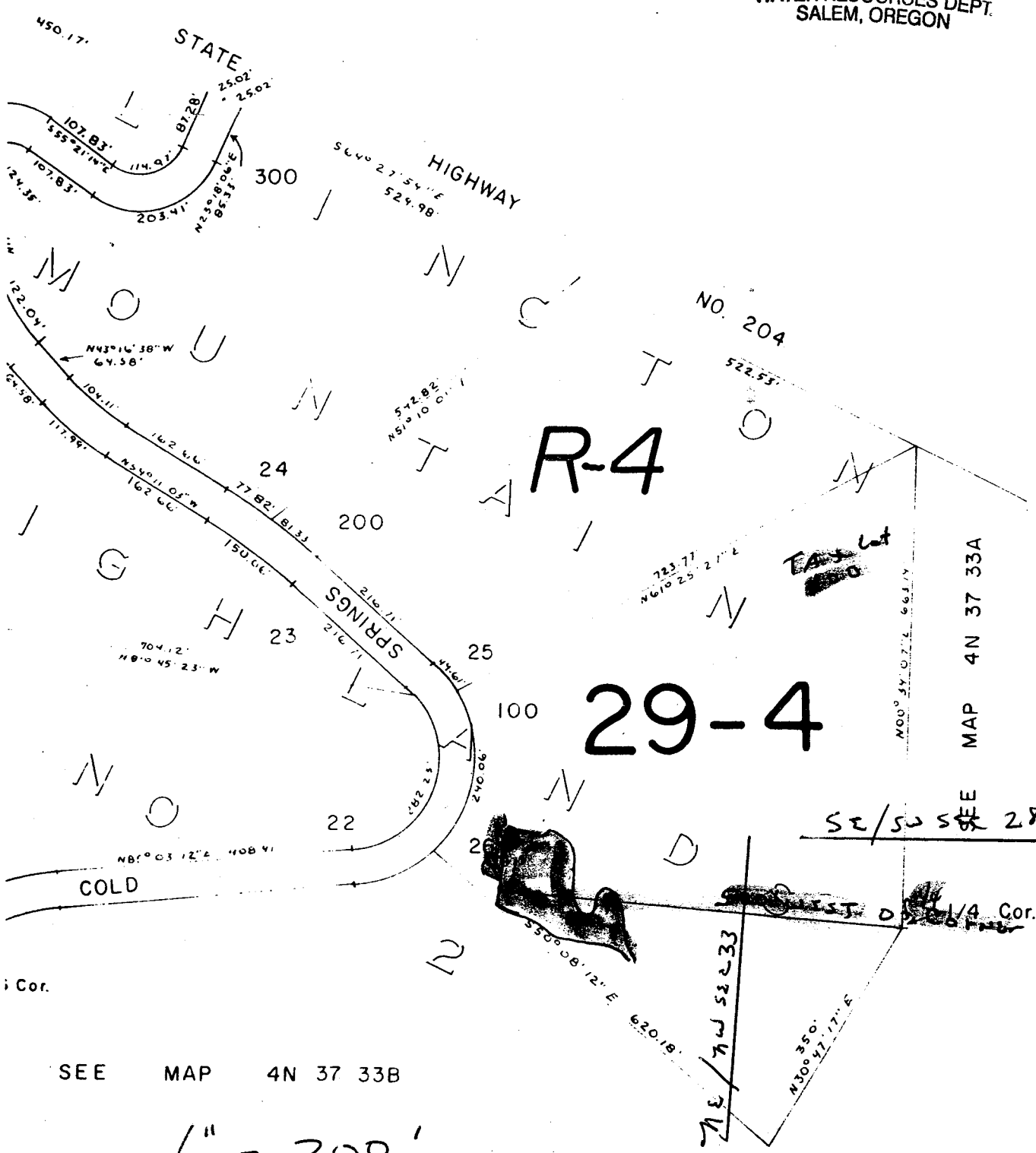
RECEIVED

DEC 06 2002

WATER RESOURCES DEPT.  
SALEM, OREGON

app # R-85370  
Permit # R-13562

7



SEE MAP 4N 37 33B

1" = 200'

4N 37 :

THIS MAP WAS PREPARED FOR  
ASSESSMENT PURPOSES ONLY

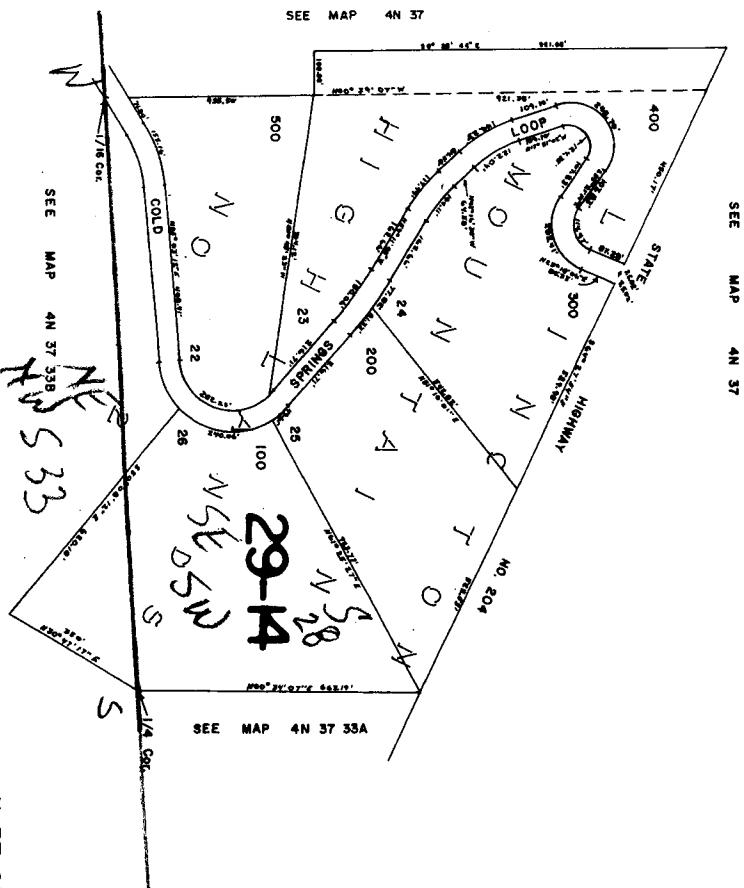
SW 1/4 Sec. 28 T.4N. R.37 E. W.M.  
UMATILLA COUNTY

1"=200'

*Map 2 of 2*

Aerial Photo No. 9P-37.38

4N 37 28C  
LINGTON MOUNTAIN-  
HIGHLANDS NO. 2  
Lots: 22 thru 26



4N 37 28C