

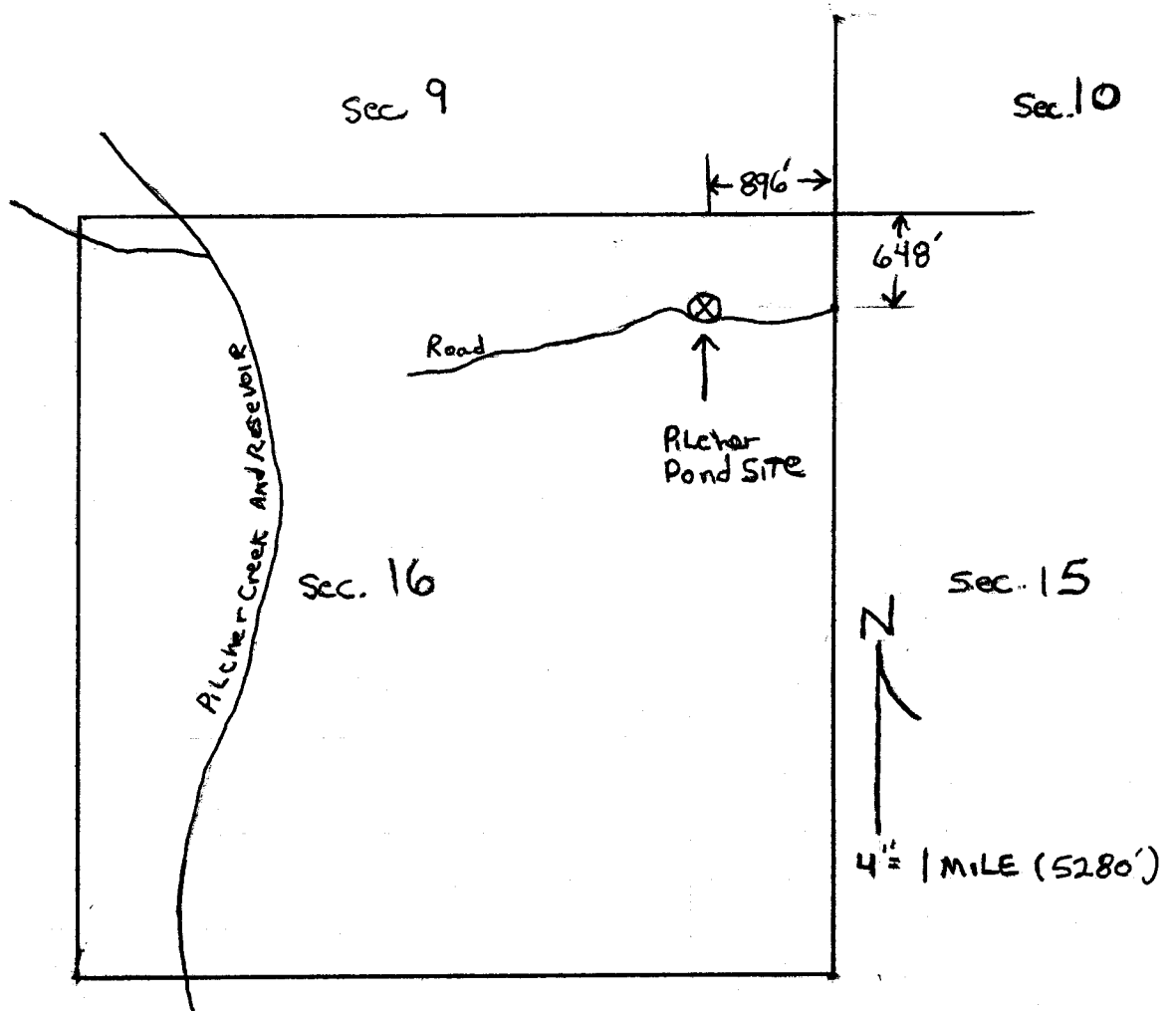
# HEFFERNAN WATER STORAGE APPLICATION

TAX LOT: 2200

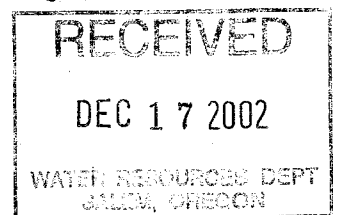
LEGAL : NE<sup>1</sup>/<sub>4</sub> NE<sup>1</sup>/<sub>4</sub> Sec. 16, Twp 6S, RGE 38E

Coordinates: N 45° 02' 55.68"  
W 118° 03' 29.7"

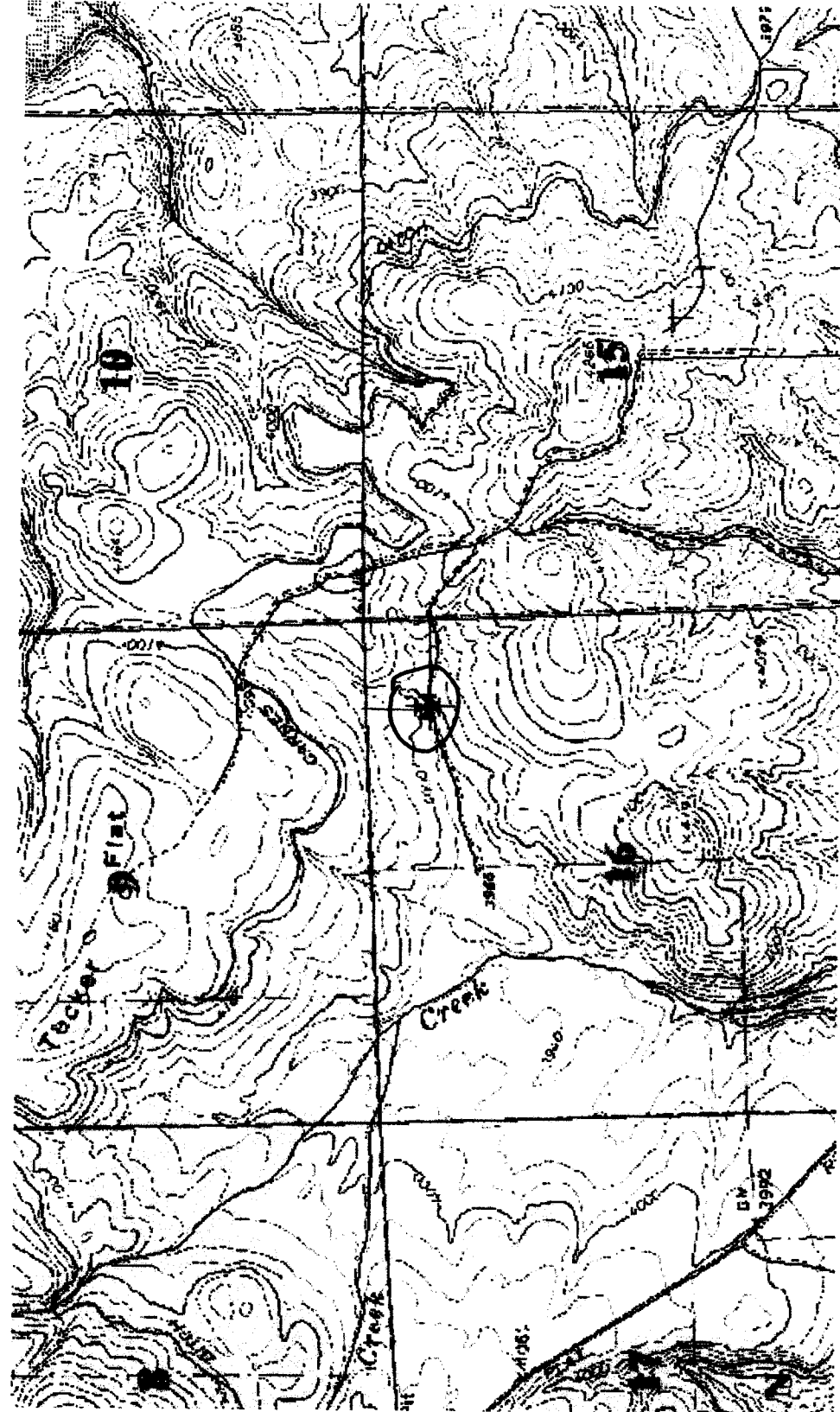
NAME: PILCHER Pond



Pond Location : 648 South and 896 West of  
The northeast corner of  
Section 16



# ODF Test Map



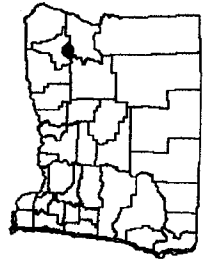
## Legend

- Complaint Points
- Fire Protection
- Forest Activity Lines
- Forest Activity Polygons
- Township Range
- City Limits
- Highways
- Rail Road
- Roads
- Lakes
- Streams



1 in. = 1736ft.

Vicinity



Oregon Department of Forestry  
9/4/02

RECEIVED  
DEC 17 2002  
WATER RESOURCES DEPT  
SALEM, OREGON

RECEIVED  
SEP 09 2002  
WATER RESOURCES DEPT.  
SALEM, OREGON