

RECEIVED

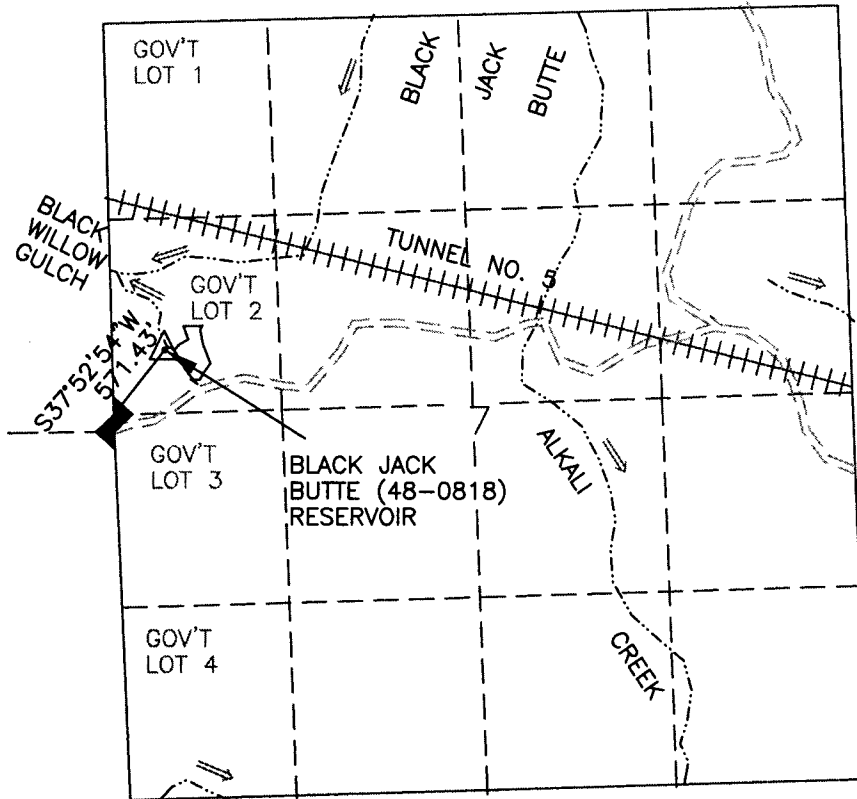
DEC 09 2002

WATER RESOURCES DEPT.
SALEM, OREGON

APPLICATION MAP FOR PERMIT TO ENLARGE A RESERVOIR

GOV'T LOT 2 SEC 7 T 22S R 46E W.M.

U.S.G.S. QUAD - DWYHEE DAM, OREG. - 7 1/2'



LEGEND

- RESERVOIR
- ROAD
- CHANNEL
- FD SEC COR
- TUNNEL
- PROJECT MON.

BLACK JACK BUTTE (48-0818) RESERVOIR

app# R-85397
Permit # R-13575



SCALE 1"=1320'

THIS MAP IS FOR THE PURPOSE OF LOCATING
A WATER RIGHT AND IS NOT INTENDED TO
PROVIDE LEGAL DIMENSIONS FOR LOCATION
OF PROPERTY BOUNDARIES.



UNITED STATES DEPARTMENT OF THE INTERIOR BUREAU OF LAND MANAGEMENT DIVISION OF OPERATIONS VALE DISTRICT	
BLACK JACK BUTTE (48-0818) RESERVOIR	
DESIGNED	
REVIEWED	<i>Jan 3 Hill</i>
APPROVED	<i>Thomas Berry</i> <small>CHIEF, BRANCH OF ENGINEERING</small>
DRAWN: CG	SCALE: 1"=1320'
DATE: 11/06/02	SHEET 1 OF 1
DRAWING NO. OR-03-9172.45-1156	

ACAD2000
DWG FILE: BLACKJACK.DWG