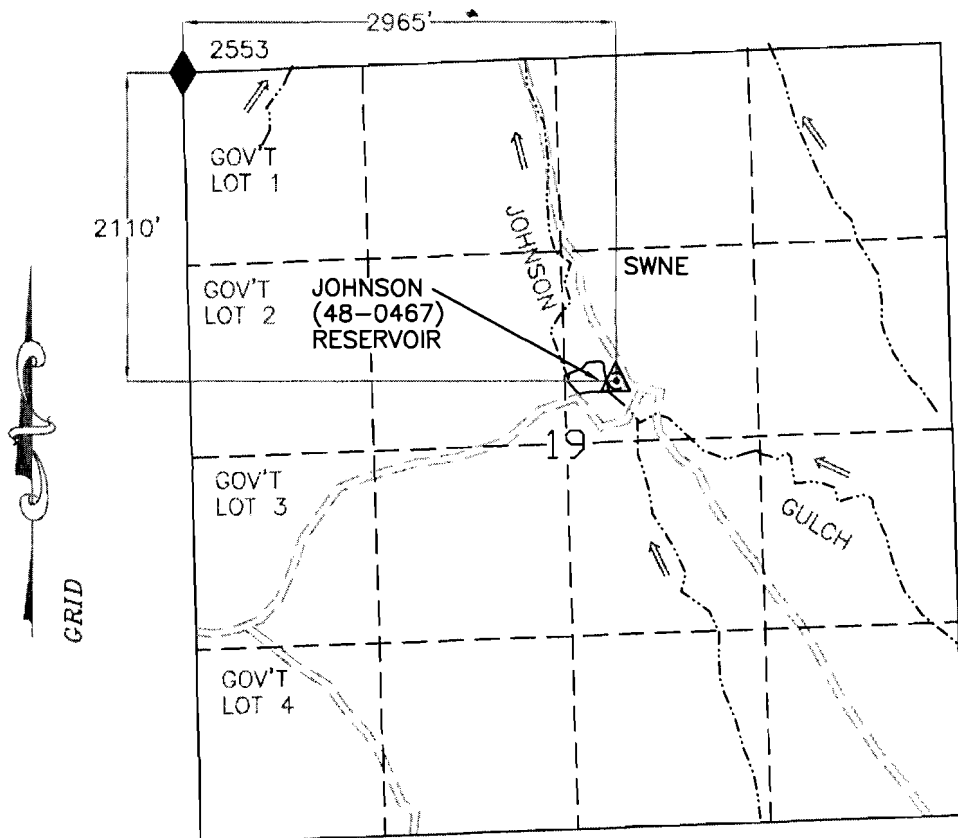


APPLICATION MAP FOR PERMIT TO ENLARGE A RESERVOIR

SW1/4 NE1/4 SEC 19 T 19S R 45E W.M.

U.S.G.S. QUAD - VALE WEST, OREG. - 7 1/2'



LEGEND

- RESERVOIR
- ROAD
- CHANNEL
- FD SEC COR
- PROJECT MON.

RECEIVED

DEC 09 2002

WATER RESOURCES DEPT.
SALEM, OREGON

JOHNSON (48-0467) RESERVOIR

app # R-85405
Permit # R-13583



SCALE 1"=1320'

THIS MAP IS FOR THE PURPOSE OF LOCATING
A WATER RIGHT AND IS NOT INTENDED TO
PROVIDE LEGAL DIMENSIONS FOR LOCATION
OF PROPERTY BOUNDARIES.



UNITED STATES DEPARTMENT OF THE INTERIOR BUREAU OF LAND MANAGEMENT DIVISION OF OPERATIONS VALE DISTRICT	
JOHNSON (48-0467) RESERVOIR	
DESIGNED	
REVIEWED	<i>Jan F. Hall</i>
APPROVED	<i>Thom Perry</i> CHIEF, BRANCH OF ENGINEERING
DRAWN: CG	SCALE: 1"=1320'
DATE: 11/13/02	SHEET 1 OF 1
DRAWING NO. OR-03-9172.45-1164	

ACAD2000
DWG FILE: JOHNSON.DWG