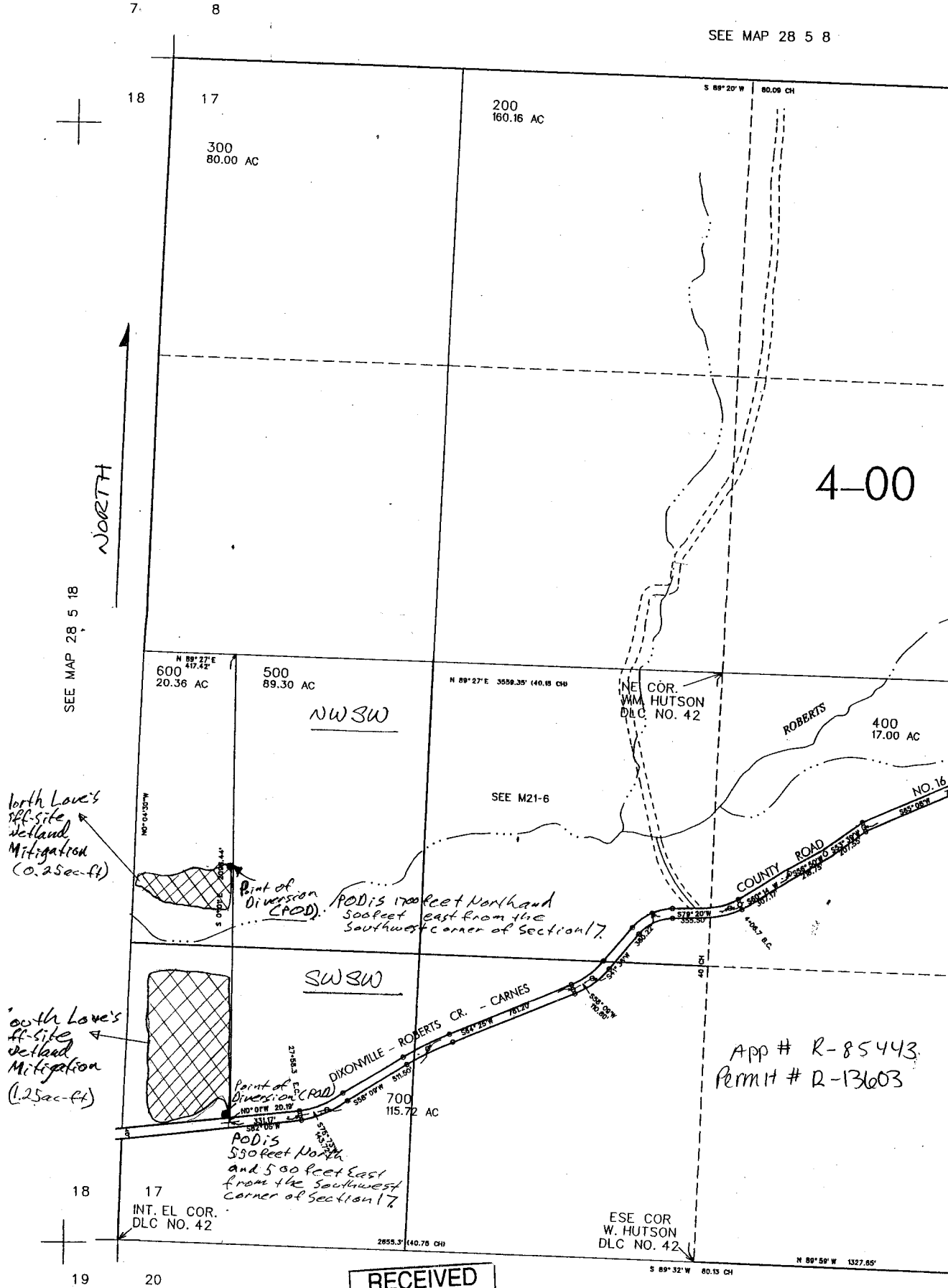


THIS MAP WAS PREPARED FOR  
ASSESSMENT PURPOSE ONLY

SEC. 17 T.28S. R. 5W W.M.  
DOUGLAS COUNTY

1"=400'

SEE MAP 28 5 8



SEE MAP 28 5 18

NORTH

North Love's off-site wetland Mitigation (0.25 ac-ft)

South Love's off-site wetland Mitigation (1.25 ac-ft)

Point of Diversion (POD) POD is 1700 feet North and 500 feet East from the Southwest corner of Section 17.

Point of Diversion (POD) POD is 550 feet North and 500 feet East from the Southwest corner of Section 17.

RECEIVED  
JAN 31 2003  
WATER RESOURCES DEPT

App # R-85443  
Permit # R-13603

SEE MAP 28 5 20