

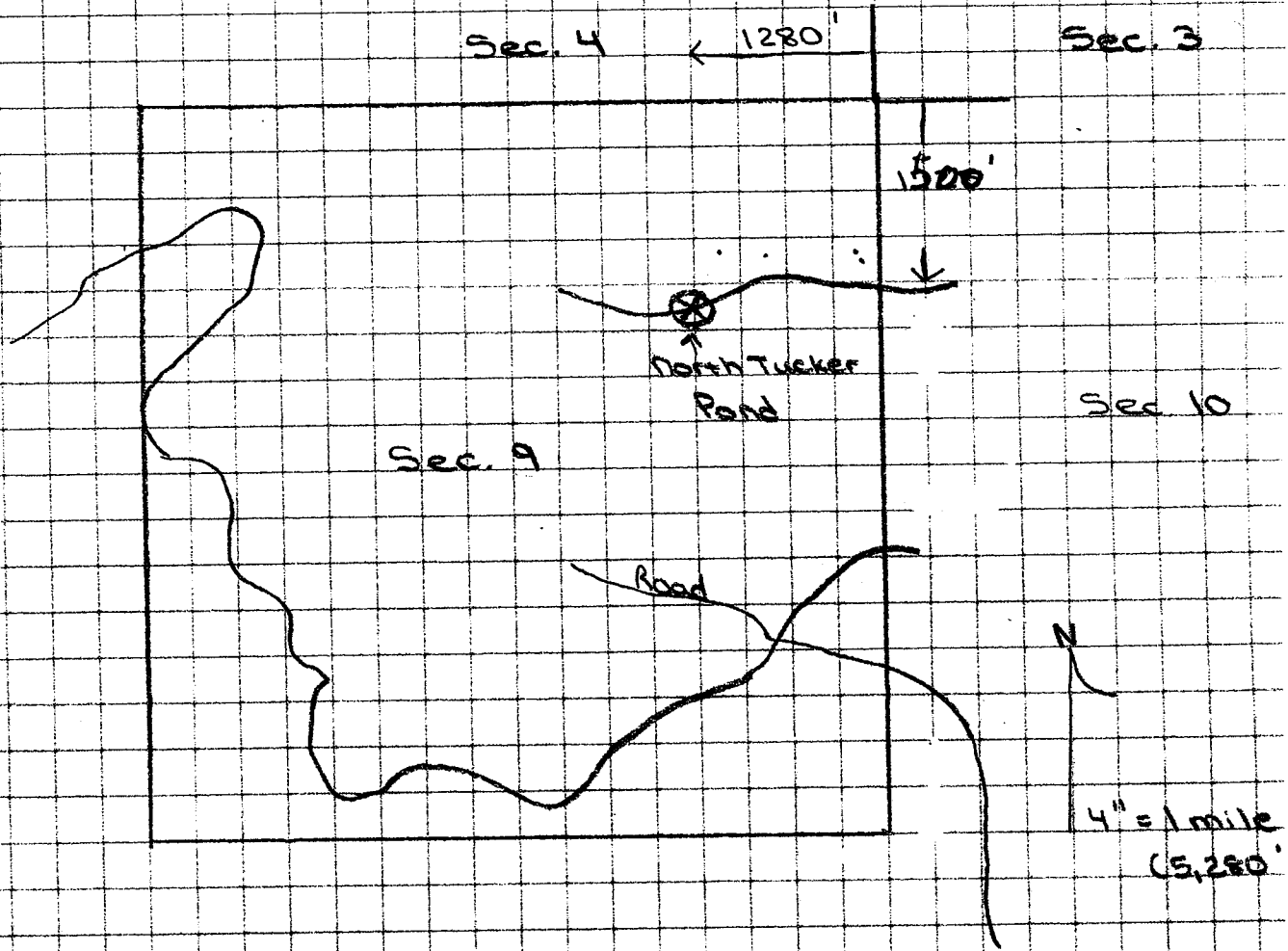
Heffernan Water Storage Application

Tax Lot: 2200

Legal: SW 1/4, NE 1/4 Sec 9 TWP 6S, R6E 38E

Coordinates: N 45° 03' 36.42"
W 118° 03' 36.18"

Name: North Tucker Pond



Pond Location: 1500' South
1280' West

App # R-85573
Permit # R-13622

from the NE corner of Sec. 9

RECEIVED

MAY 01 2003

WATER RESOURCES DEP
SALEM, OREGON