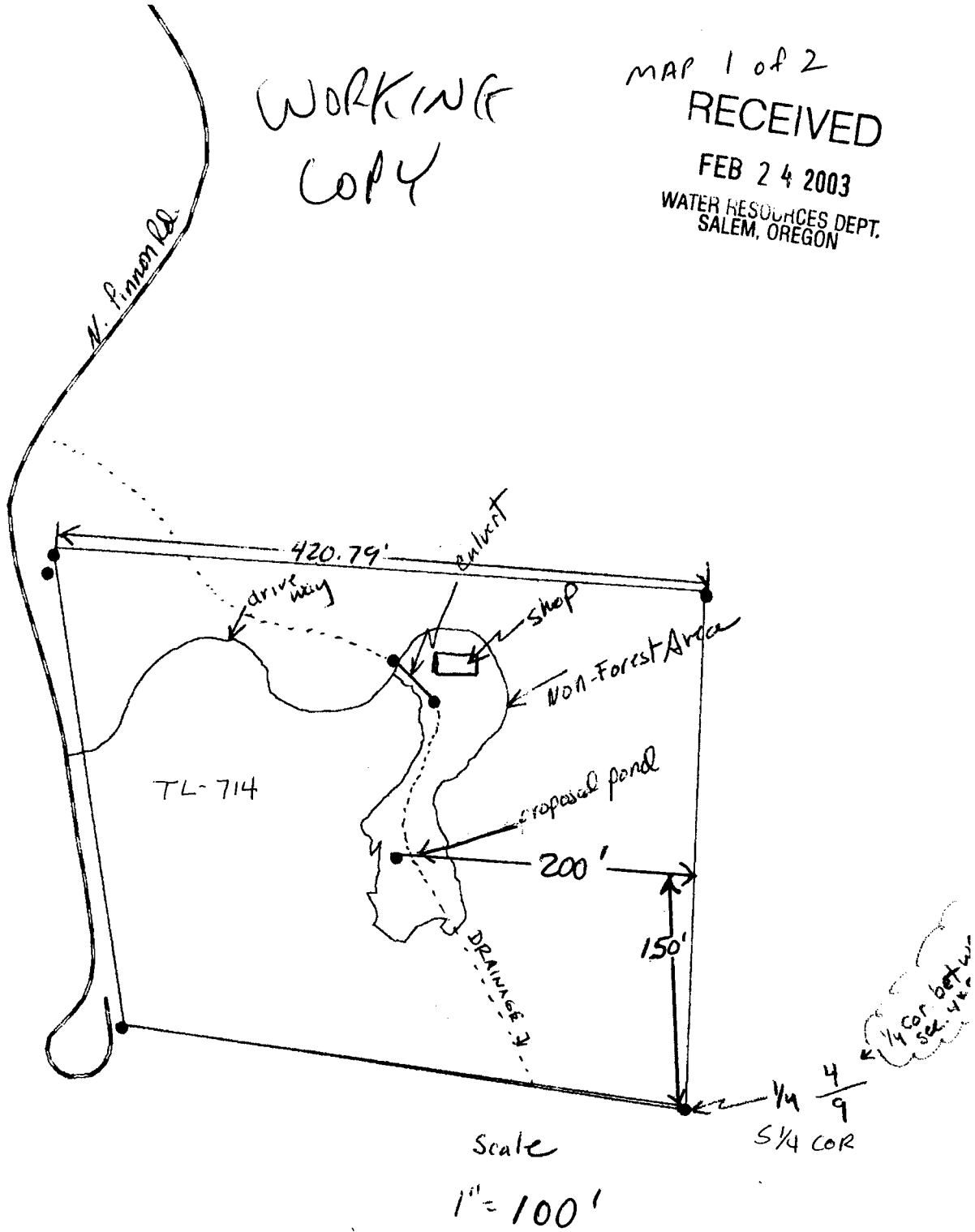


WORKING  
COPY

MAP 1 of 2  
RECEIVED  
FEB 24 2003  
WATER RESOURCES DEPT.  
SALEM, OREGON



APP # R. 85479  
PERMIT # R-13631

T. 36 S., R. 6 W sec 4, SE 1/4, SW 1/4

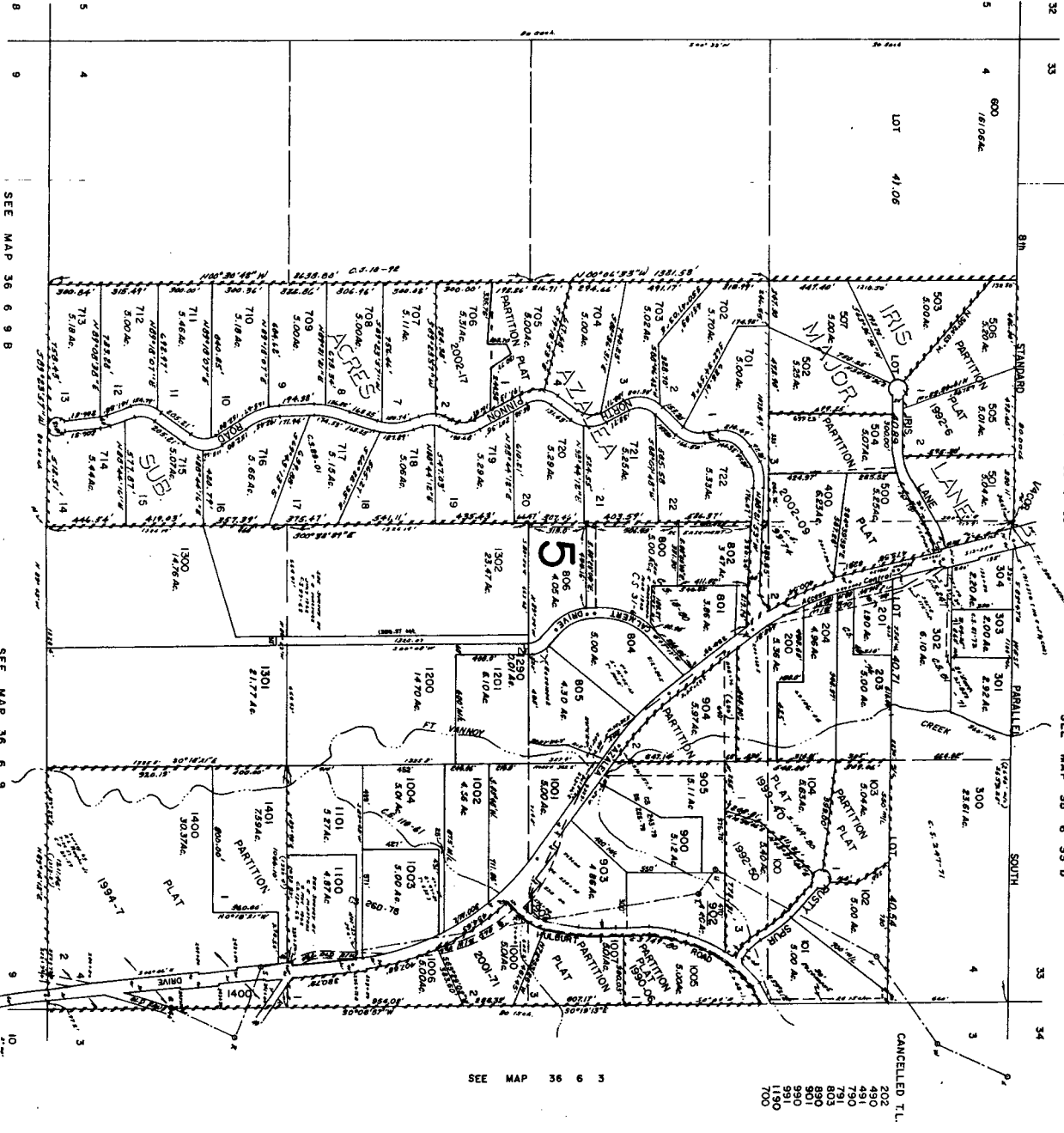
SECTION 4 T36S R6W WM.  
JOSEPHINE COUNTY

1"=400'

This map was prepared for  
assessment purpose only.

MAP 2 of 2

SEE MAP 36 6 5



SEE MAP 36 6 9 B

SEE MAP 36 6 9

SEE MAP 36 6 3