

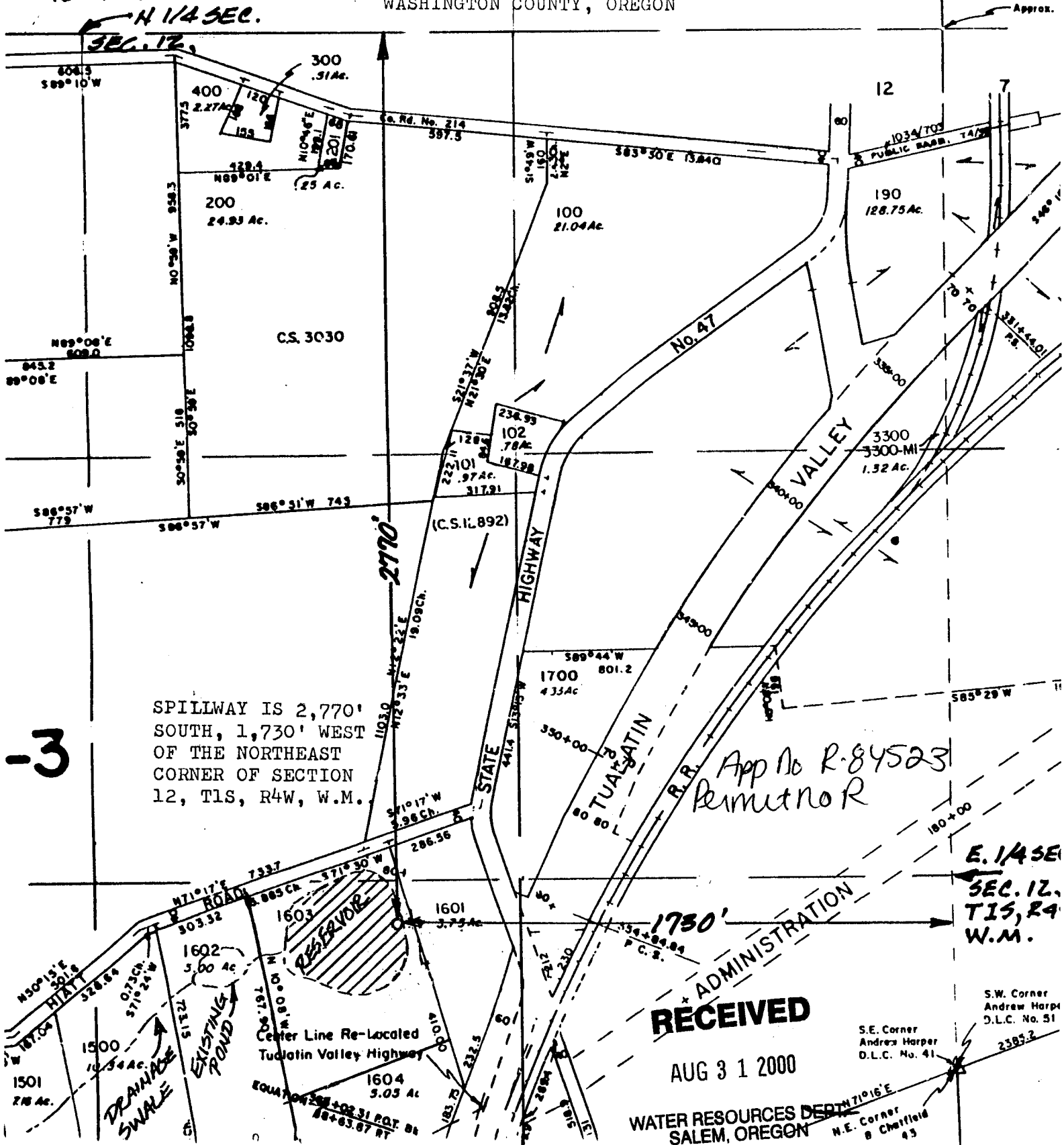


MAP SHOWING LOCATION OF RESERVOIR
LOCATED IN THE S.W 1/4 OF THE N.E. 1/4
AND THE N.W. 1/4 OF THE S.E. 1/4 OF
SECTION 12, T1S, R4W, W.M.,
WASHINGTON COUNTY, OREGON

SEE MAP
IS 4 1

6

Approx.



SPILLWAY IS 2,770'
SOUTH, 1,730' WEST
OF THE NORTHEAST
CORNER OF SECTION
12, T1S, R4W, W.M.

App No R-84523
Permit No R

E. 1/4 SE
SEC. 12,
T1S, R4
W.M.

RECEIVED

AUG 3 1 2000

WATER RESOURCES DEPT
SALEM, OREGON

S.W. Corner
Andrew Harper
D.L.C. No. 51
2585.3
S.E. Corner
Andrew Harper
D.L.C. No. 41
N.E. Corner
B Chaffield
45

-3