

THIS MAP WAS PREPARED FOR  
ASSESSMENT PURPOSE ONLY

app # R-85567  
Permit #

P.O. BOX 395  
HALFWAY, OR. 97834  
SECTION 18 T.8S. R.46E.  
BAKER COUNTY

1" = 400'

SEE MAP 8 46 7

400 800  
LE IN FEET

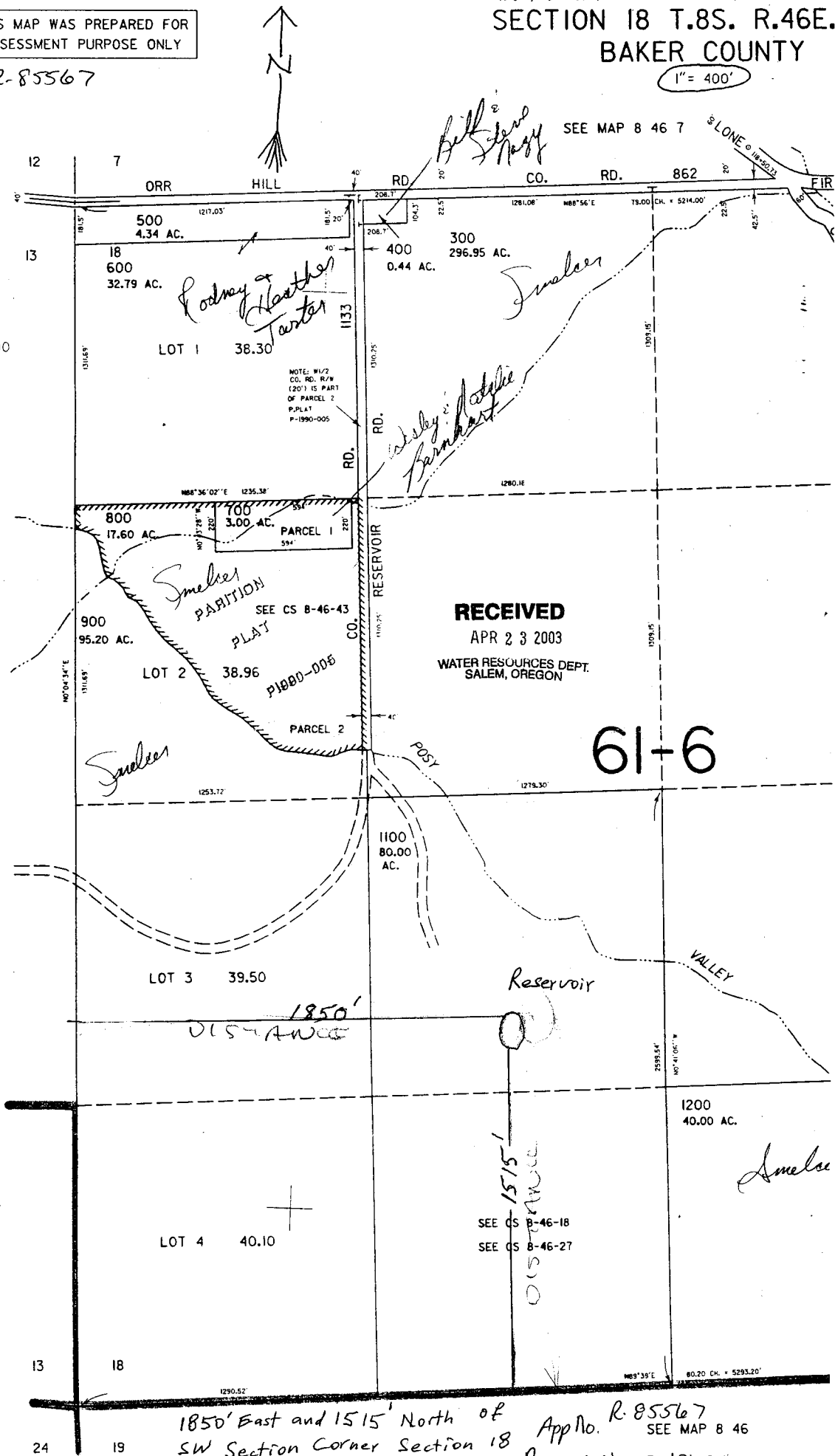
SEE MAP 8 45

RECEIVED

APR 23 2003

WATER RESOURCES DEPT.  
SALEM, OREGON

61-6



1850' East and 1515' North of  
SW Section Corner Section 18  
Township 8S Range 46 E

App No. R-85567  
SEE MAP 8 46  
Permit No R-13688

ED