

RECEIVED

APR 03 2003

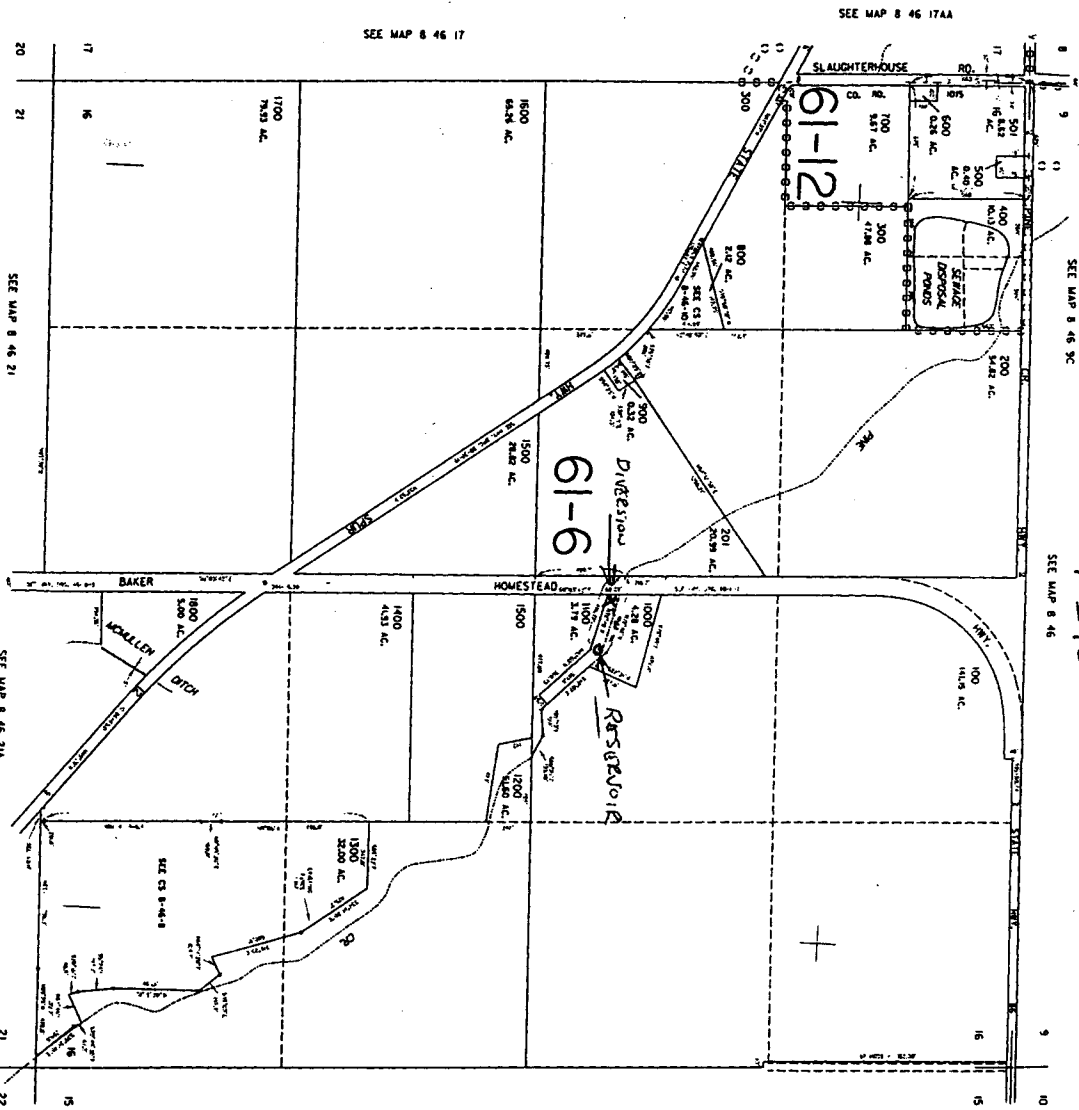
WATER RESOURCES DEPT.  
SALEM, OREGON

App # R-85585  
Permit # R-13700

SCALE: AS SHOWN  
1" = 1000'

THIS MAP WAS PREPARED FOR  
ASSESSMENT PURPOSE ONLY

SECTION 16 T.8S. R.46E. W.M.  
BAKER COUNTY



452,000  
Revised  
4/25/02 9C  
8 46 16  
HALFWAY

RESERVOIR IS  
325' NORTH  
320' EAST FROM  
CENTER 1/4 CORNER  
SECTION 16  
WITHIN SW NE  
DIAGONAL IS  
400' NORTH  
30' EAST FROM  
CENTER 1/4 CORNER  
WITHIN SW NE  
SECTION 16

8 46 16  
HALFWAY

RECEIVED  
MAY 02 2003  
WATER RESOURCES DEPT.  
SALEM, OREGON