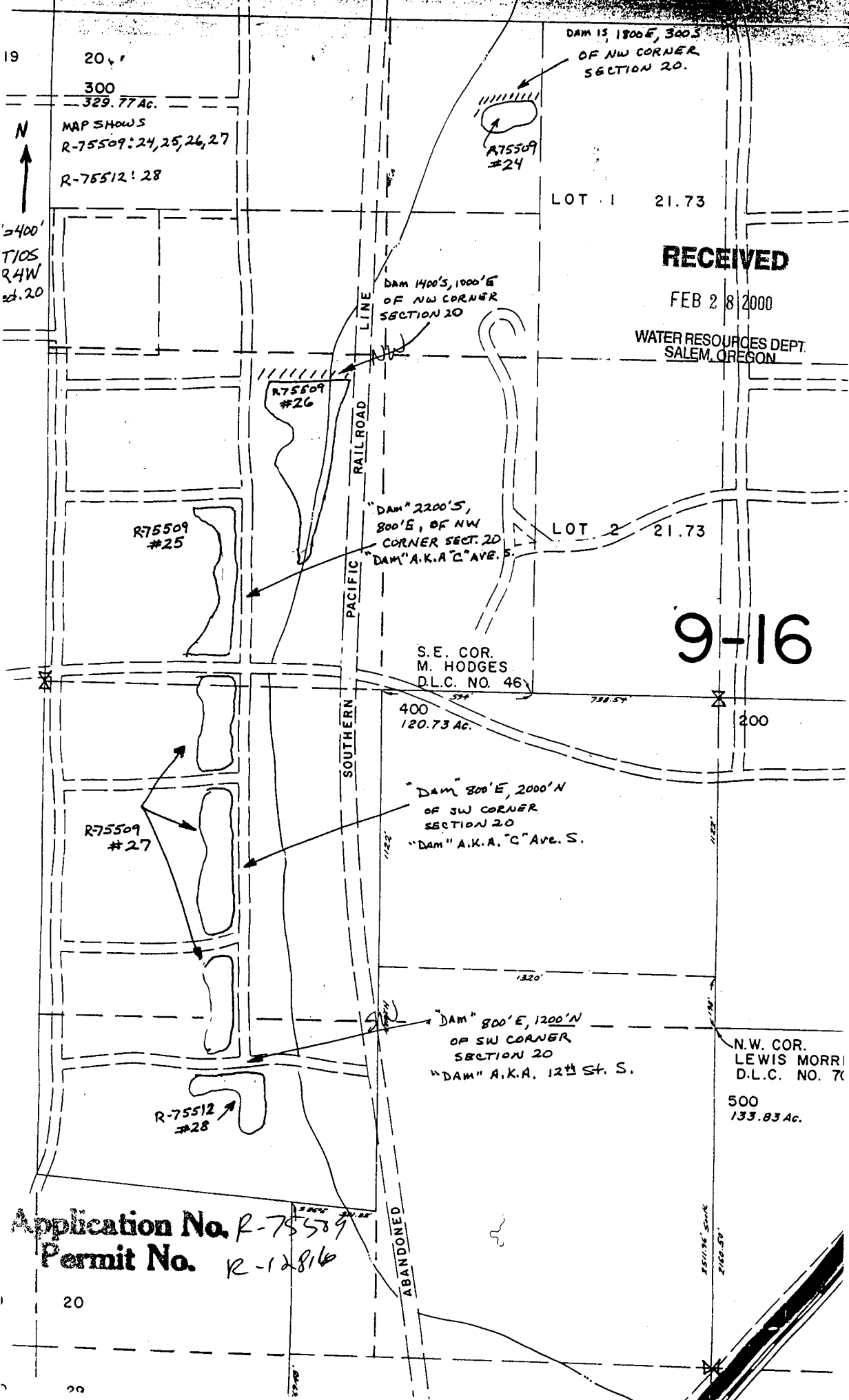


Application No. R-75509

Permit No. R-1284

38190

72234.82 PCS



19  
20  
300  
329.77 Ac.  
MAP SHOWS  
R-75509: 24, 25, 26, 27  
R-75512: 28

1" = 400'  
T10S  
R4W  
S. 20

DAM 15, 1800'E, 300'S  
OF NW CORNER  
SECTION 20.

R75509  
#24

LOT 1 21.73

RECEIVED

FEB 28 2000

WATER RESOURCES DEPT.  
SALEM, OREGON

DAM 1400'S, 1000'E  
OF NW CORNER  
SECTION 20

R75509  
#26

"DAM" 2200'S,  
800'E, OF NW  
CORNER SECT. 20  
"DAM" A.K.A. "C" AVE. E.

LOT 2 21.73

R75509  
#25

S.E. COR.  
M. HODGES  
D.L.C. NO. 46

9-16

400  
120.73 Ac.

"DAM" 800'E, 2000'N  
OF SW CORNER  
SECTION 20  
"DAM" A.K.A. "C" AVE. S.

R75509  
#27

"DAM" 800'E, 1200'N  
OF SW CORNER  
SECTION 20  
"DAM" A.K.A. 12th St. S.

N.W. COR.  
LEWIS MORRI  
D.L.C. NO. 70

R-75512  
#28

500  
133.83 Ac.

Application No. R-75509  
Permit No. R-12816

20

20

ABANDONED

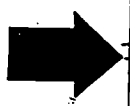
RECEIVED

FEB 28 2000

WATER RESOURCES DEPT  
SALEM, OREGON

18 17 100 397.77 Ac.

c.s. 188+  
22.1



1" = 400'

T10S R4W SEC 17

R-75509  
Reservoirs: 18, 19, 21, 22, 23

Quarter Corner

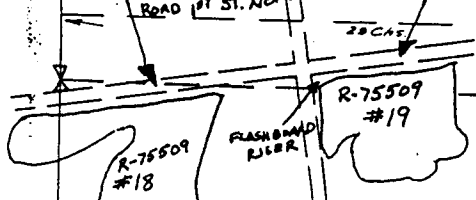
LOT 1 35.00 LOT 2 37.72

250' E  
Dam is 2700' S  
FROM NW CORNER  
SECTION 17, DAM IS  
ROAD 1ST ST. NORTH

"DAM" IS 2700'S  
800' E FROM NW  
CORNER SECTION 17.  
"DAM" A.K.A. 1ST ST. NORTH.

9

SEE MAP 10 4 18



NE COR.  
D.L.C. NO. 46

101  
0.23 Ac.

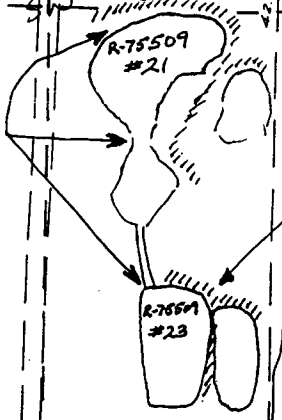
LOT 3 21.78

CAMP ADAIR RD. 500' S 730' W CO. RD.

100

Dam located  
1600' E, 1400' N OF  
SW CORNER SECTION 17

Dam 2100' E, 1200' N  
SW CORNER SECTION 17



DAM 1700' E, 500' N  
S.W. CORNER SECTION 17  
LOT 4 21.78

Application No. R-75509  
Permit No. R-12816

18 17

29 CHS.