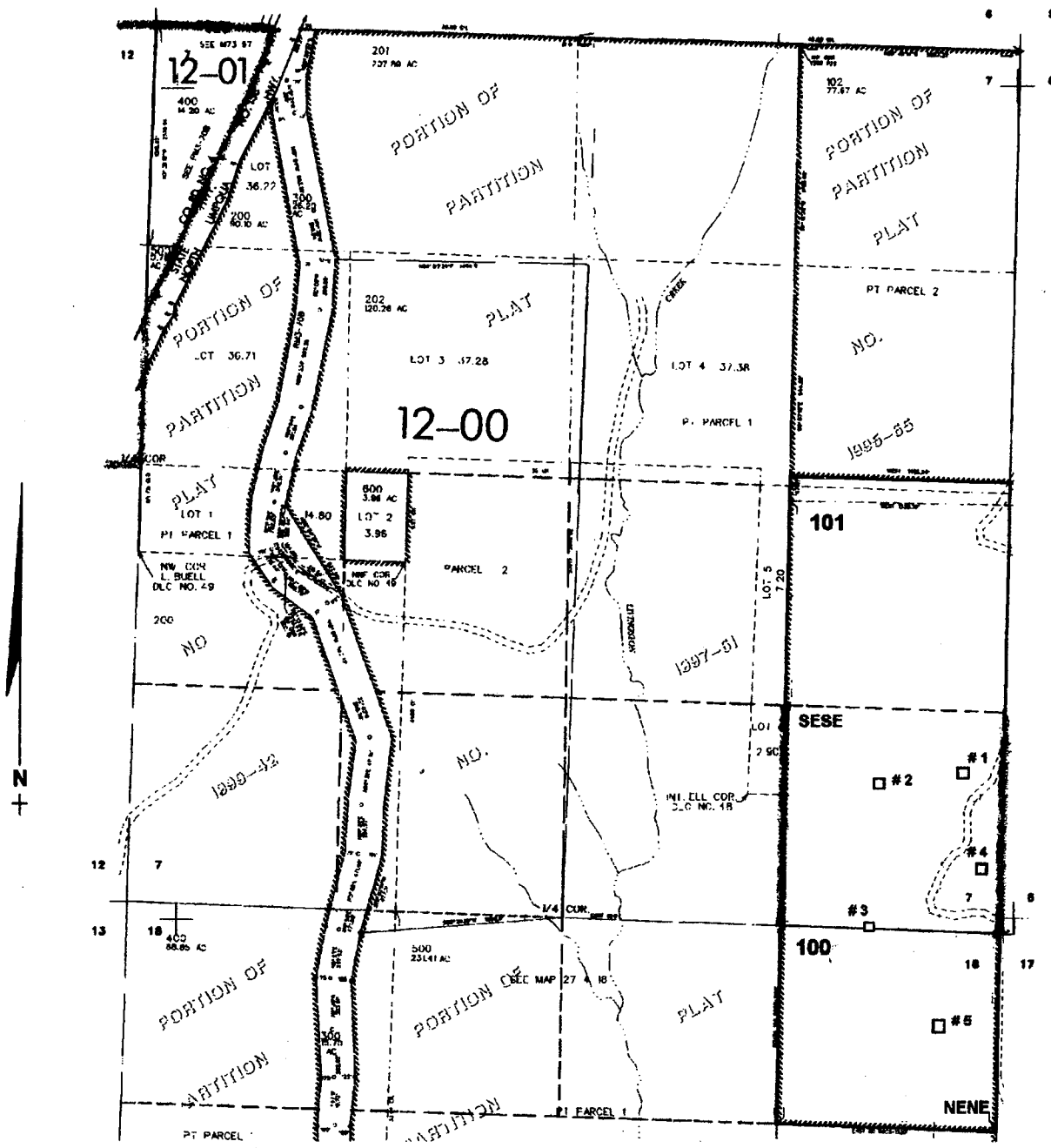


T.27S. R.4 W. W.M.  
DOUGLAS COUNTY  
Scale: 1" = 1000'



- Pond #1 - 950 ft. N. & 250 ft. W. }  
 #2 - 950 ft. N. & 750 ft. W. } all from the SE corner of Sec. 7  
 #3 - 800 ft. W. }  
 #4 - 400 ft. N. & 150 ft. W. }  
 #5 - 550 ft. S. & 350 ft. W. }

**RECEIVED**

MAY 20 2003

WATER RESOURCES DEPT.  
SALEM, OREGON

app # R-95608  
Permit # R-13708