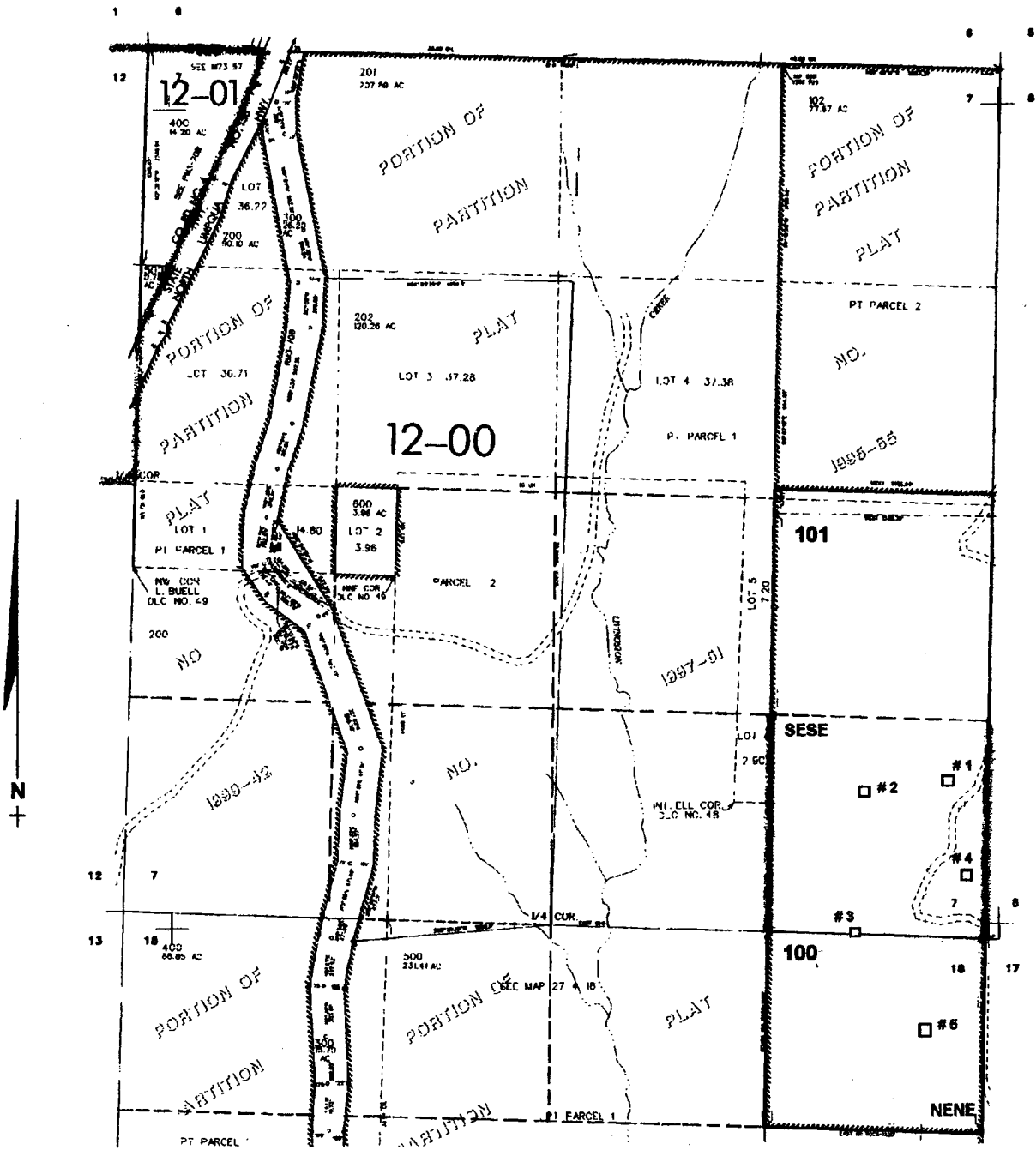


T.27S. R.4 W W.M.
DOUGLAS COUNTY
Scale: 1" = 1000'



- Pond # 1 - 950 ft. N. & 260 ft. W. }
- # 2 - 950 ft. N. & 780 ft. W. }
- # 3 - 800 ft. W. } all from the SE corner of Sec. 7
- # 4 - 400 ft. N. & 180 ft. W. }
- # 5 - 650 ft. S. & 380 ft. W. }

RECEIVED
MAY 20 2003
WATER RESOURCES DEPT.
SALEM, OREGON

app # R-85609
Permit # R-13709