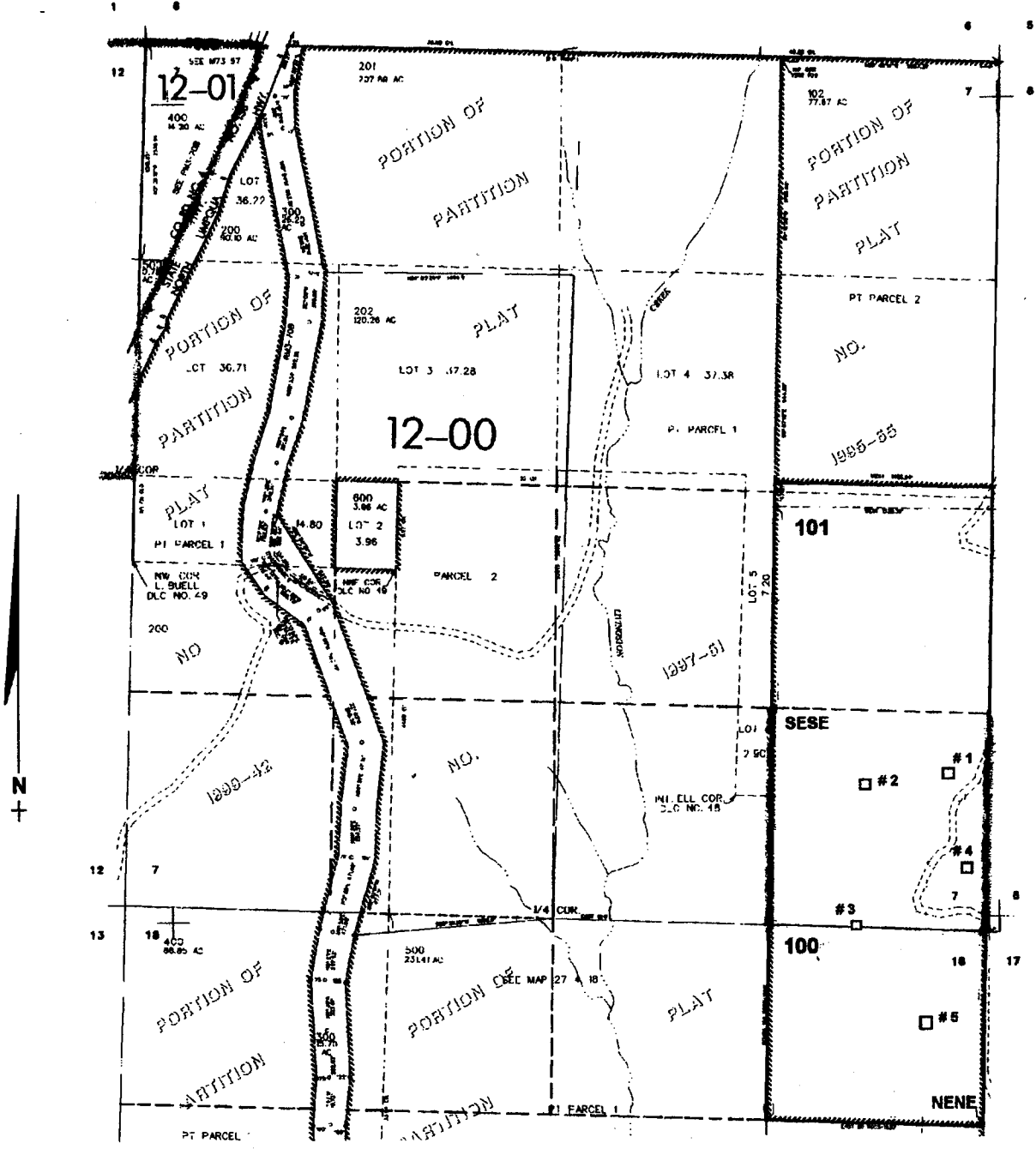


T.27S. R.4 W W.M.
DOUGLAS COUNTY
Scale: 1" = 1000'



- Pond # 1 - 950 ft. N. & 250 ft. W. }
 # 2 - 950 ft. N. & 750 ft. W. } all from the SE corner of Sec. 7
 # 3 - 800 ft. W. }
 # 4 - 400 ft. N. & 150 ft. W. }
 # 5 - 550 ft. S. & 350 ft. W. }

app # R-85610
 permit # R-13710

RECEIVED
 MAY 20 2003
 WATER RESOURCES DEPT.
 SALEM, OREGON