

RECEIVED

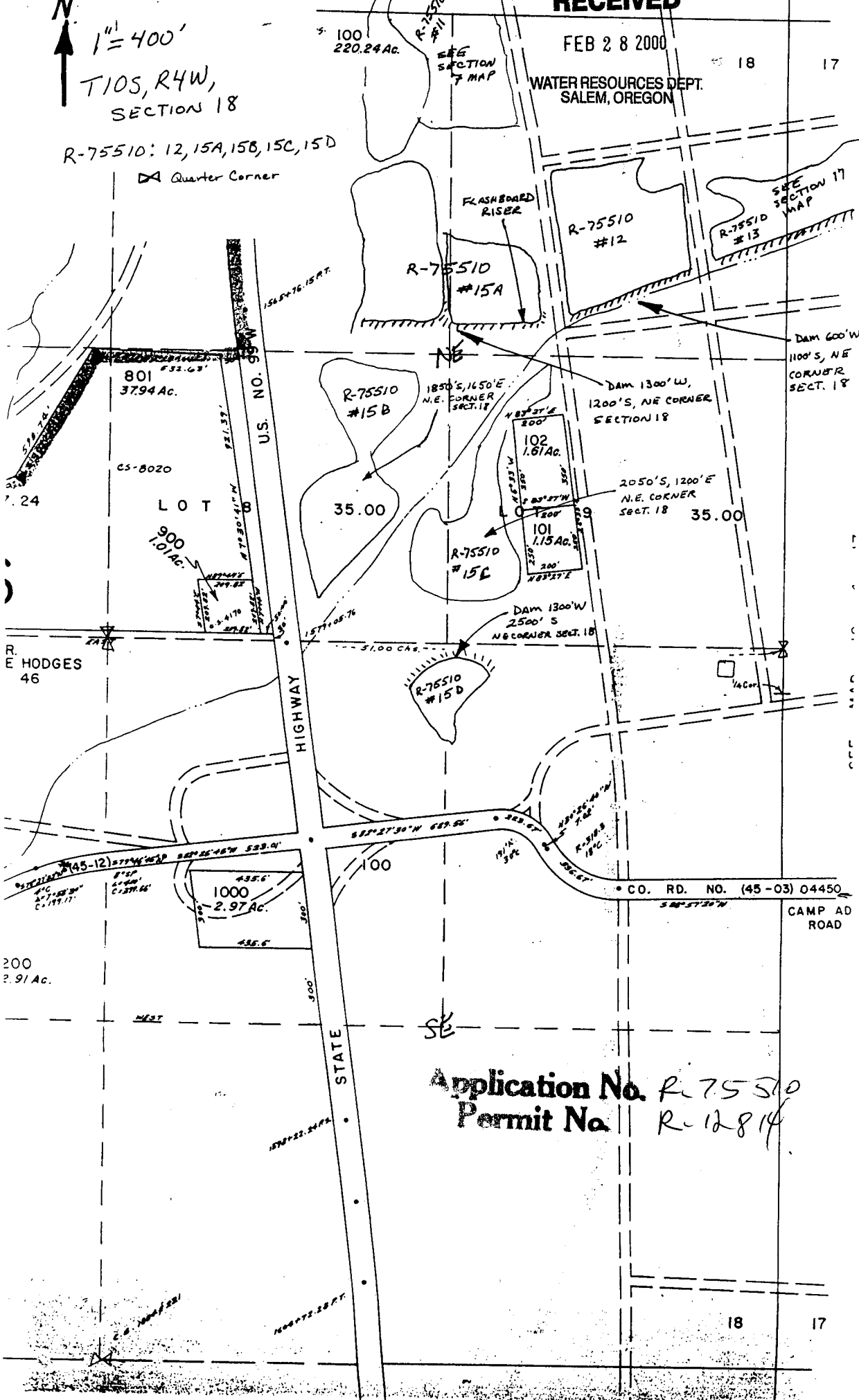
FEB 28 2000

WATER RESOURCES DEPT.
SALEM, OREGON

N
1" = 400'
T10S, R4W,
SECTION 18

R-75510: 12, 15A, 15B, 15C, 15D

Quarter Corner



Application No. R-75510
Permit No. R-12814

18 17



1" = 400'
T10S, R4W, SECTION 7
R-75510: 11
Quarter Corner

RECEIVED

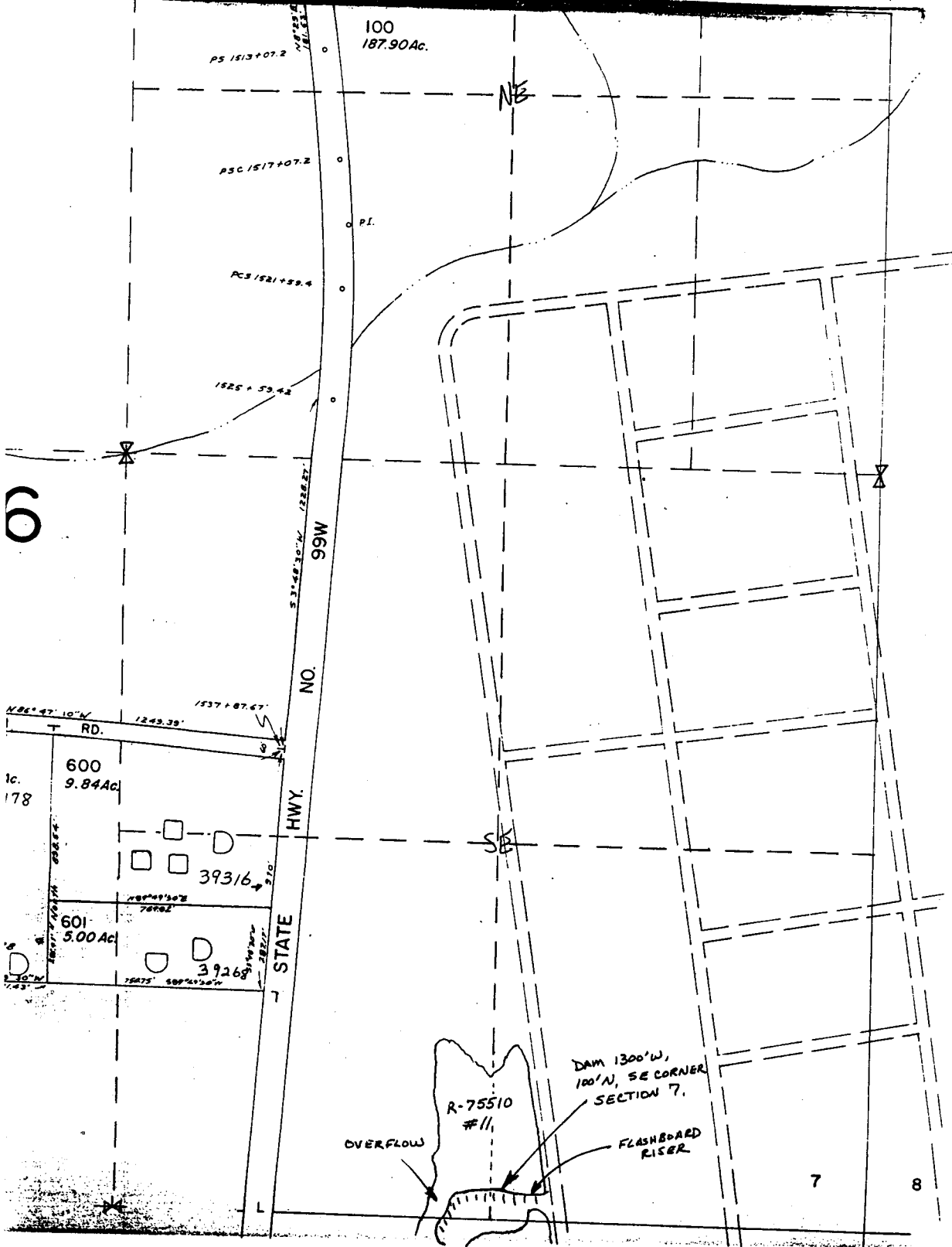
FEB 28 2000

WATER RESOURCES DEPT.
SALEM, OREGON

Application No. R-75510
Permit No. R-12814

COUNTY

Brass Cap in
Concrete Post
for County Line Marker



6

1c.
178

7

8

RECEIVED

FEB 28 2000

WATER RESOURCES DEPT.
SALEM, OREGON

1" = 400'

T10S, R4W, Sect. 17

R-75510: 13, 16, 17

DD Quarter Corner

c.s. 180' 22'

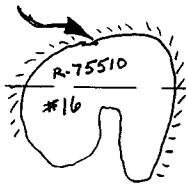
100
397.77 Ac.

ROCKED OVERFLOW

DAM 1000'S,
1900' E, NW CORNER:
SECTION 17

DAM 850'S
NW CORNER SECTION 17

DAM 1200'S, 1000' E
NW CORNER SECTION 17



Application No. R-75510

Permit No. R-12814

LOT 1

35.00

LOT 2

37.72

9-16

29 C&S

NE COR.
D.L.C. NO. 46

101
0.23 Ac.

LOT 3

21.78

CAMP ADAIR RD.

S 88° 57' 30" W

CO.

RD.

NO.

100

LOT 4

21.78

29 C&S

SEE MAP 10 4 18



18 17

ON COUNTY

1" = 400'

N



T10S, R4W, Section 8

R-75510:14

1/4 Quarter Corner

RECEIVED

FEB 28 2000

WATER RESOURCES DEPT.
SALEM, OREGON

REV. 07-
CANC.

300A1

Application No. R-75510

Permit No. R12814

COUNTY

200
18.50Ac.

8-06

SEE MAP 10 4 9

9-16

300L1
300A2
10.00Ac.

CS-8731

300
107.16 Ac.

OVERLAP

"DAM" 2600' W
SE CORNER
SECTION 8
"DAM" A.K.A.
5th St. N
FLASHBOARD RISER

SW COR.
CROGHAN RHODES
D.L.C. NO. 68

SE COR.
JOHN RODGERS
D.L.C. NO. 66

LOT 5

5.95

COR.
NO. 66

R-75510
#14

