

DN COUNTY

1" = 400'



RECEIVED

8

Application No. R-75511 FEB 28 2000

Permit No. R-12813 WATER RESOURCES DEPT. SALEM, OREGON

REV. 07
CANC.
300A1

T10S, R4W, Section 8

R-75511: 10

QUARTER CORNER

COUNTY

200
18.50Ac.

8-06

SEE MAP 10 4 9

9-16

300L1
300A2
10.00Ac.

CS-8731

300
107.16 Ac.

"DAM" 2700' W,
400' N, SE CORNER
SECTION 8
"DAM" A.K.A.
6th St. N.

R-75511
#10

FLASHBOARD
RISER

SW COR.
CROGHAN RHODES
D.L.C. NO. 68

SE COR.
JOHN RODGERS
D.L.C. NO. 66

LOT 5

5.95

8

9

76945CA

OVERLAP

2.5.109

0.66

76945CA 2208R222
N 89° 54' E

C.S. 823

76945CA

RECEIVED

FEB 28 2000

7

8

Application No. R-7551N
Permit No. R-12813

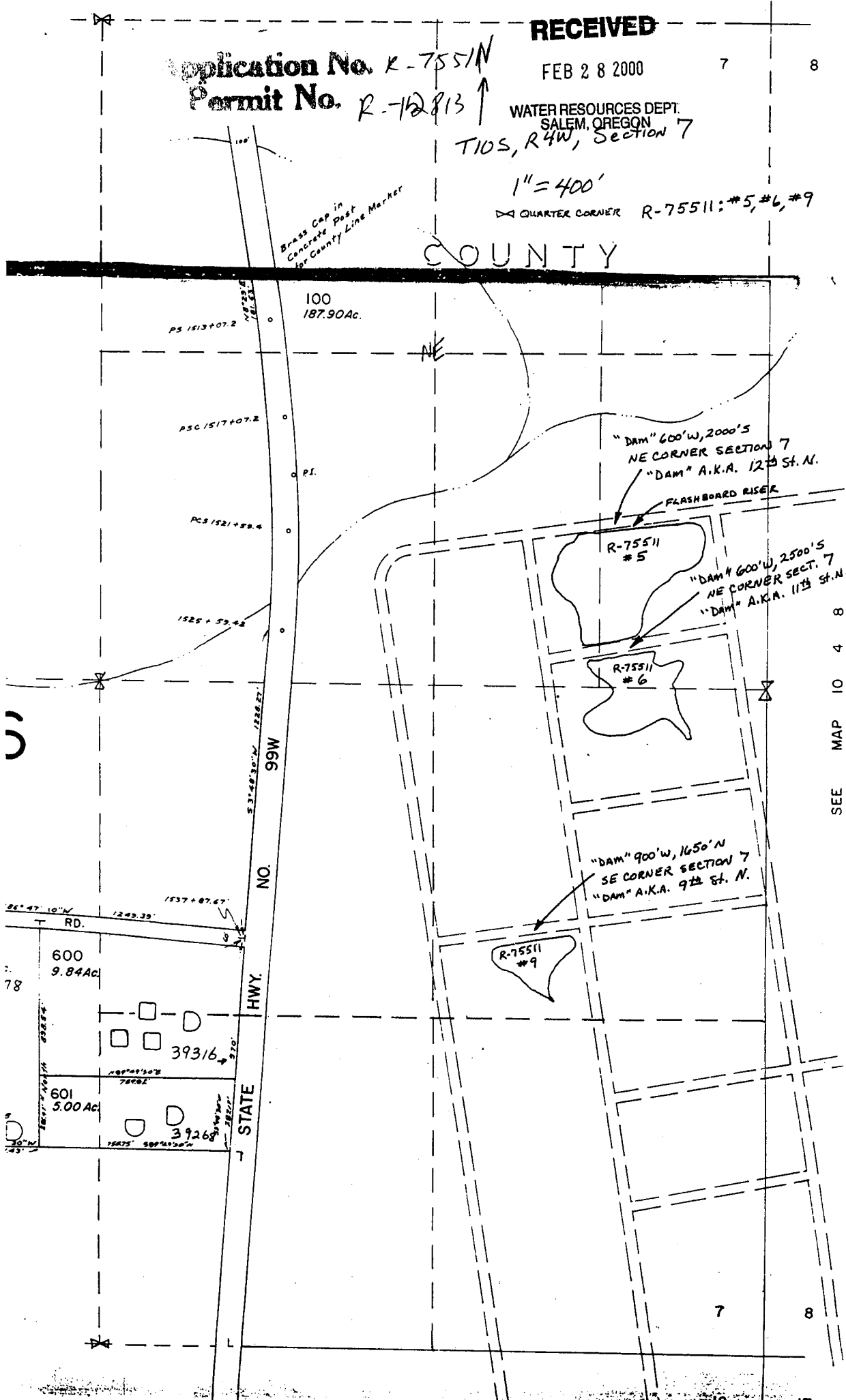
WATER RESOURCES DEPT.
SALEM, OREGON
T10S, R4W, SECTION 7

1" = 400'

QUARTER CORNER R-75511: #5, #6, #9

COUNTY

Brass Cap in
Concrete Post
for County Line Marker



SEE MAP 10 4 8

7

8