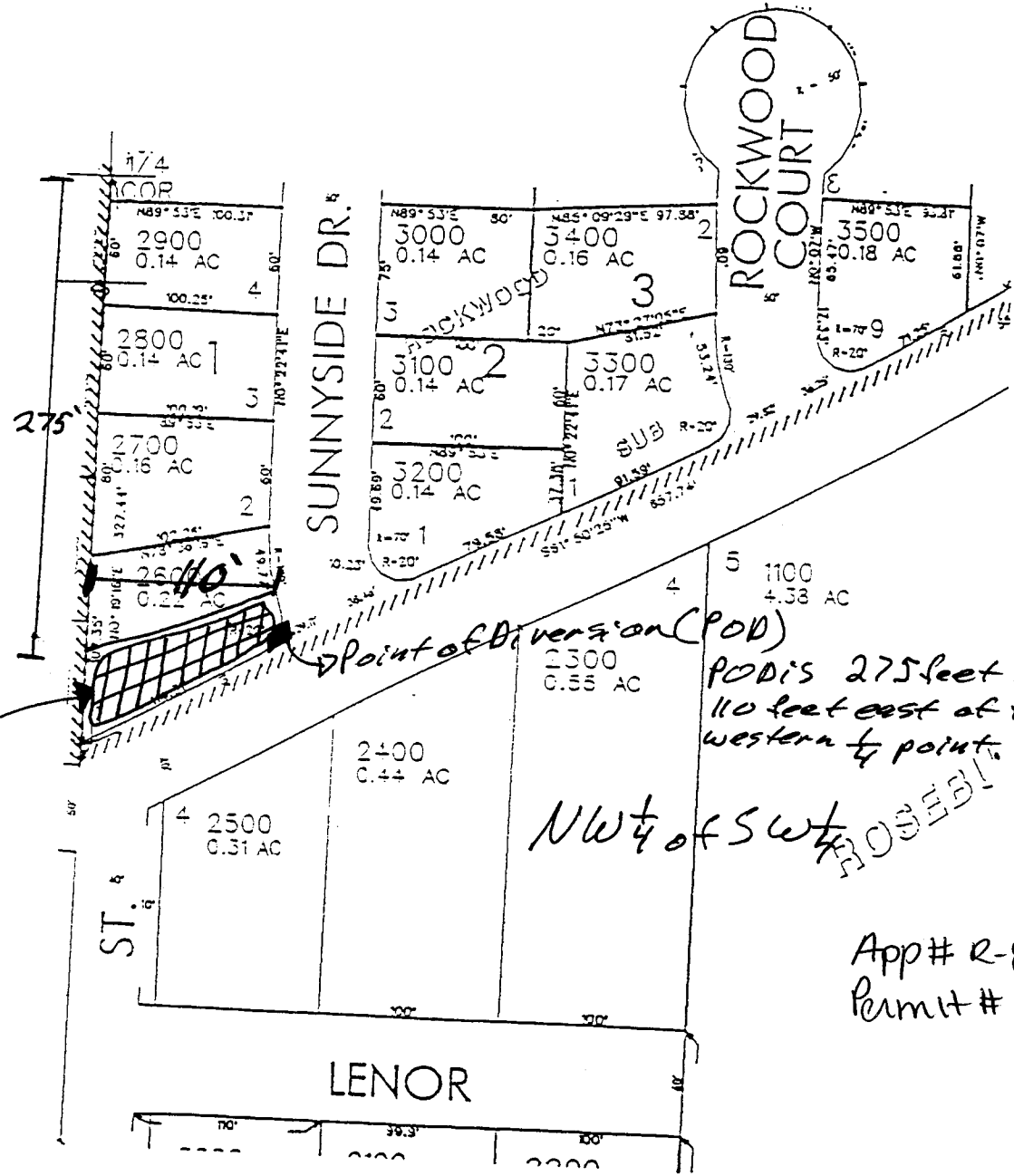


SEE MAP 28 6 22BC

N



"Pond"

Point of Diversion (POD)

POD is 275 feet south and 110 feet east of the western boundary point.

NW 1/4 of SW 1/4

App # R-85619
Permit #

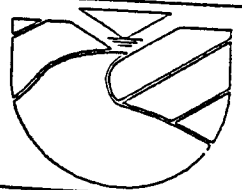


SCALE: 1 inch = 100 feet

RECEIVED

MAY 27 2003

WATER RESOURCES DEPT.
SALEM, OREGON



DOUGLAS COUNTY ASSESSORS TAX LOT MAP T28S-R6W-S22CB

Land And Water Environmental Services, Inc.
525 S.E. Main St
Roseburg, OR 97470
Tlf: (541) 672-0393/ Fax: 672-7170

Date: 12/24/02
Design: LAWESI
Drawn: BFL
Checked: LW

Project Name:
KDA-01

FIGURE 5

THIS MAP WAS PREPARED FOR ASSESSMENT PURPOSE ONLY

NW1/4 SW1/4 SEC. 22 T.28S. R.6 W. W.M. DOUGLAS COUNTY

REVISED ON 12-26-01

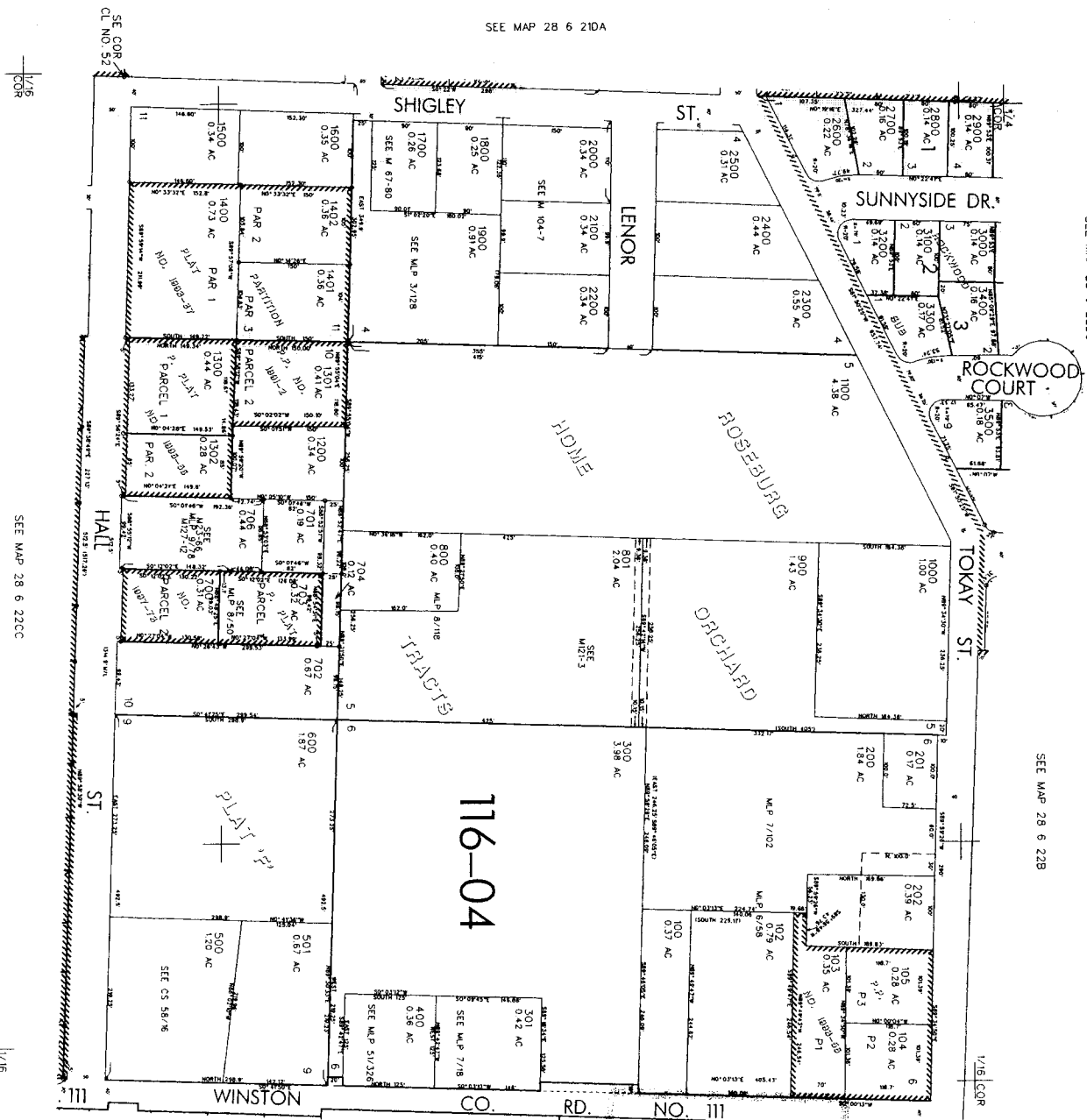
28 6 22CB WINSTON

SEE MAP 28 6 228C

SEE MAP 28 6 22B

SEE MAP 28 6 210A

SEE MAP 28 6 22C



116-04

CANCELLED NOS. 101 705 203 204

542,000

4,147,000

17/16 COR

17/16 COR

28 6 22CB WINSTON