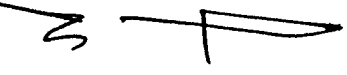


WORKING COPY 1" = 800'

dam locations:
 2600 feet east and 100 feet south of the Northwest corner of section 14; and
 Pond #2
 2600 feet east and 200 feet south of the Northwest corner of section 14.



Pond legend:



RECEIVED
 APR 3 0 2003
 WATER RESOURCES DEPT
 SALEM, OREGON

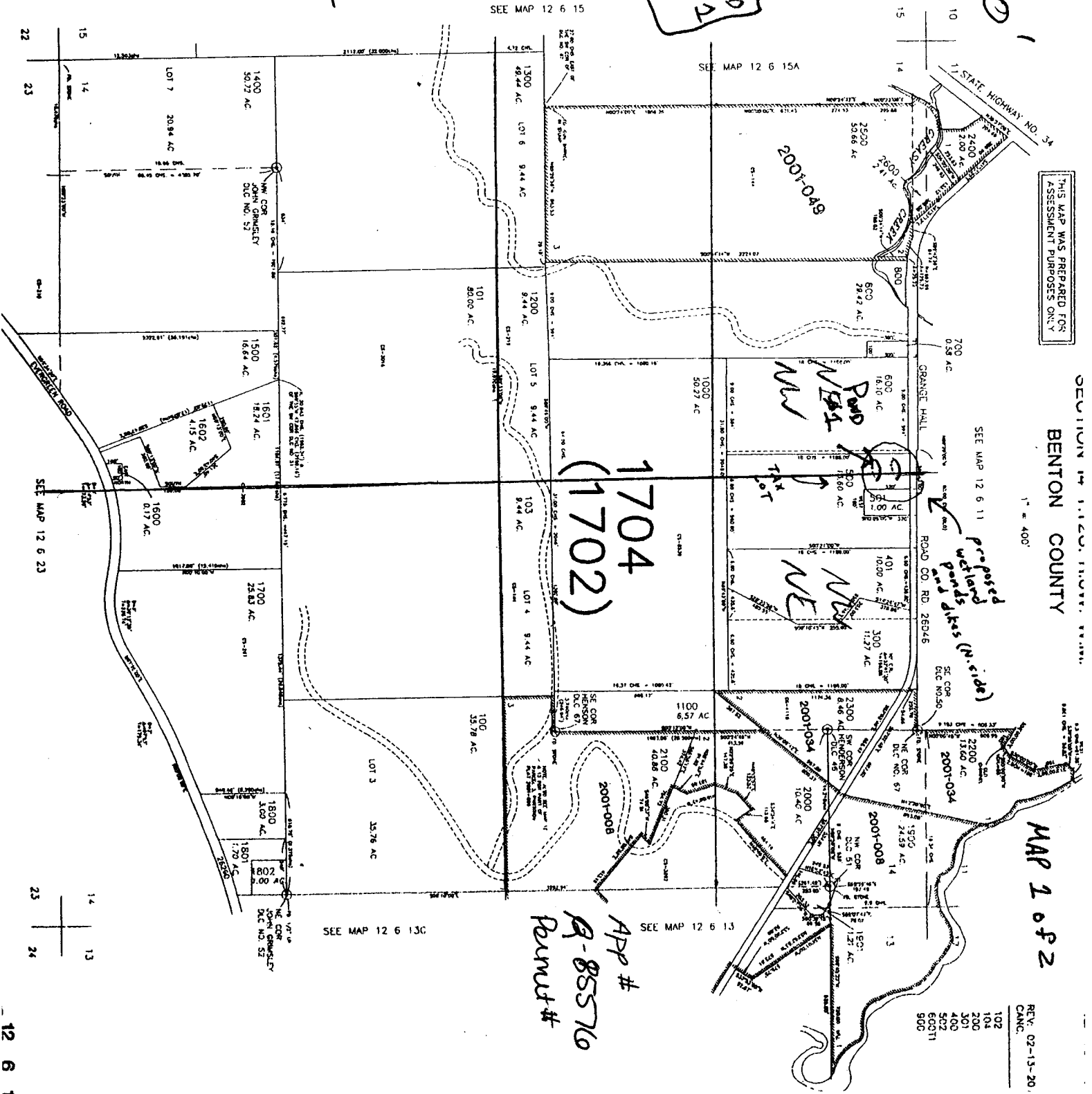
THIS MAP WAS PREPARED FOR ASSESSMENT PURPOSES ONLY

SECTION 14, T120N, R120E, W12E, BENTON COUNTY, OREGON

1" = 400'

MAP 2 of 2

REV. 02-15-20
 102
 104
 200
 301
 400
 502
 600T1
 900



SEE MAP 12 6 15

SEE MAP 12 6 15A

SEE MAP 12 6 11

SEE MAP 12 6 13

SEE MAP 12 6 13C

SEE MAP 12 6 23

APP #
 A-855716
 Permit #

proposed wetland ponds dikes (N. side)

Pond #1

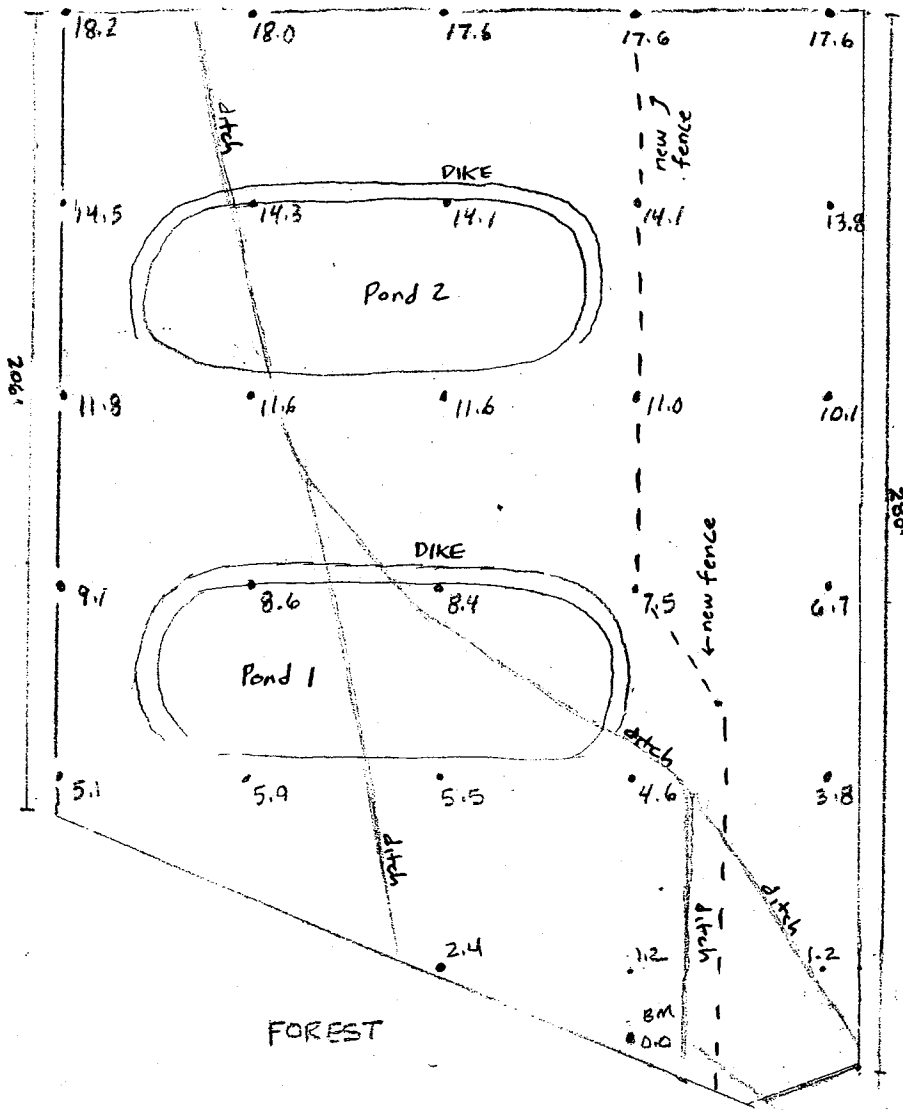
Pond #2

1704
 (1702)

N

GRANGE HALL ROAD

208'



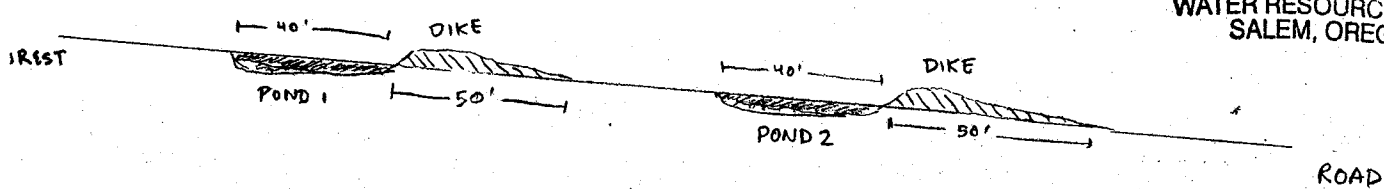
Map 2 of 2

SCALE: 1" = 50 ft.

RECEIVED
 APR 30 2003
 WATER RESOURCES DEPT.
 SALEM, OREGON

R
 APPLICATION: 85576
 PERMIT: R-13736

RECEIVED
 APR 23 2003
 WATER RESOURCES DEPT.
 SALEM, OREGON



CROSS-SECTIONAL VIEW (following western ditch line)