

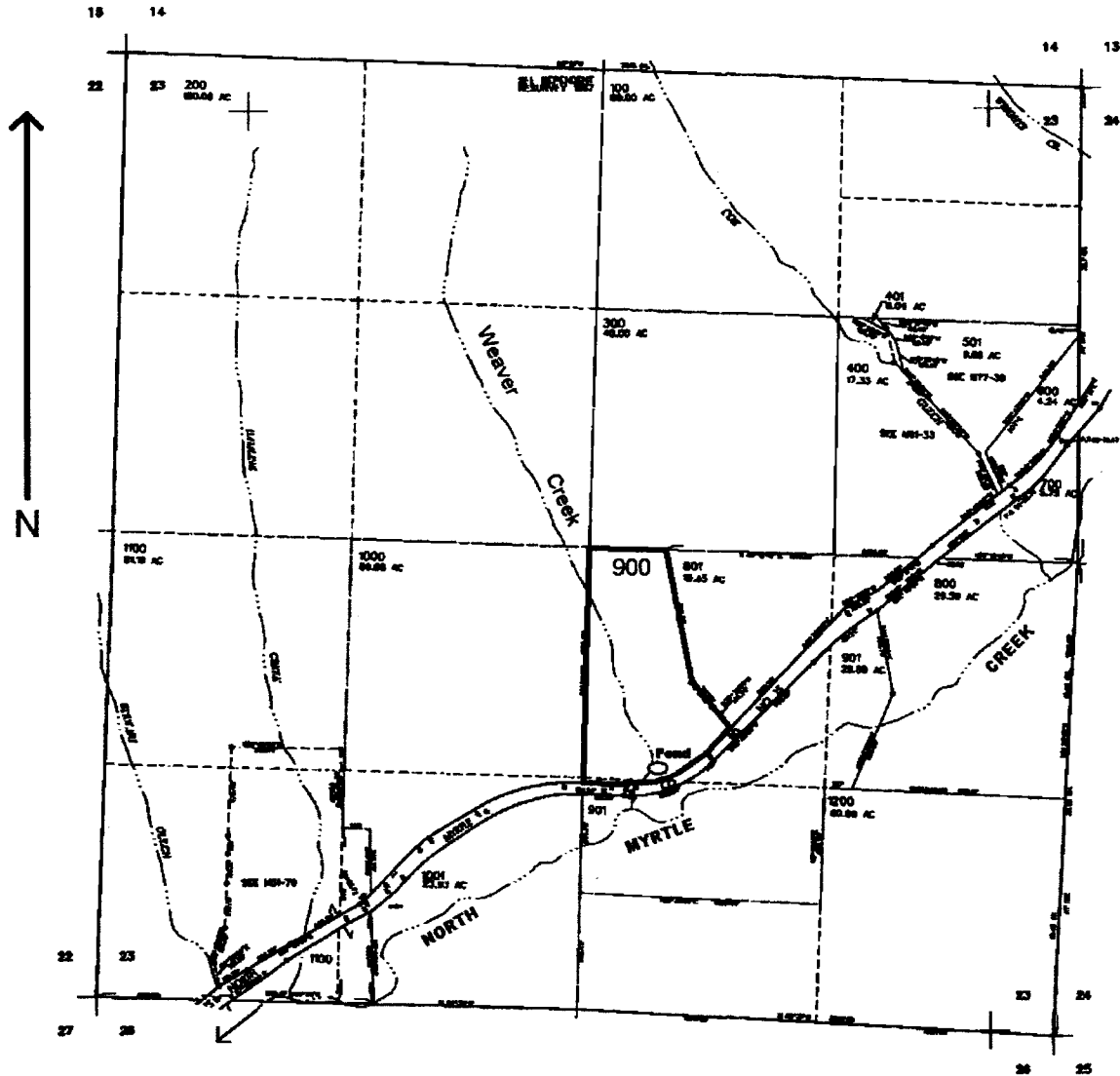
RECEIVED

JUN 02 2003

WATER RESOURCES DEPT.
SALEM, OREGON

SEC. 23 T.28S. R.4 W. W.M.
DOUGLAS COUNTY

Scale: 1" = 1000'



Dam located 1300 ft. N. and 350 ft. E. from the S. 1/4 corner of Sec. 23

app no R-85627
Permit no R-13737