

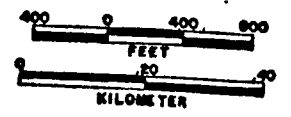
RECEIVED

APR 03 2003

WATER RESOURCES DEPT.  
SALEM, OREGON

SEE MAP 8 46 G

SCALE 1:9600.



RECEIVED  
SEP 21 1992  
WATER RESOURCES DEPT.  
SALEM, OREGON

RECEIVED

MAY 02 2003

WATER RESOURCES DEPT.  
SALEM, OREGON

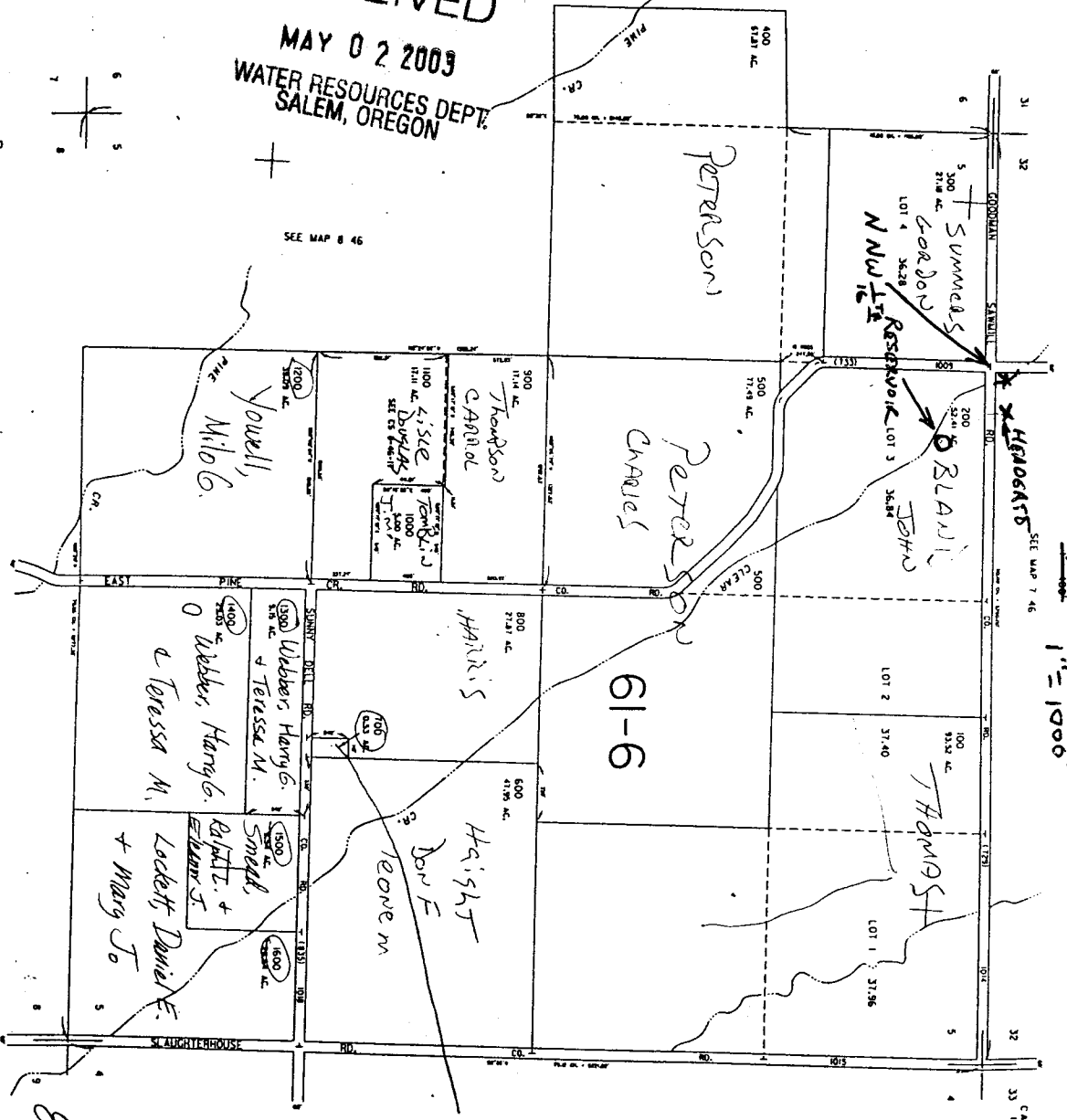
SEE MAP 8 46

THIS MAP WAS PREPARED FOR  
ASSESSMENT PURPOSE ONLY

SECTION 5 T. 8S. R. 46E. W. 1/4  
BAKER COUNTY

1" = 1000'

8 46 5



CANCELLED NO. 33 1700A1

SEE MAP 8 46 4

466,000

8 46 5

RESERVOIR IS  
280' SOUTH  
420' EAST  
FROM  
NORTH NW 1/4 CORNER  
WITHIN NE 1/4 NW 1/4 SEC 5

DIVERSION IS  
100' NORTH  
250' EAST  
FROM  
NORTH NW 1/4 CORNER  
WITHIN SE 1/4 SW 1/4 SEC 32

APP # R-85584  
Permit # R-13739