

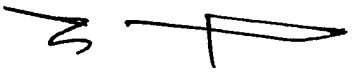
WORKING COPY 1" = 800'

2600 feet east and 100 feet south of the Northwest corner of section 14; and

dam locations: POND #2 2600 feet east and 100 feet south of the Northwest corner of section 14; and POND #1 2600 feet east and 200 feet south of the Northwest corner of section 14.

Pond #1 or dam

POND



RECEIVED APR 3 0 2003 WATER RESOURCES DEPT SALEM, OREGON

THIS MAP WAS PREPARED FOR ASSESSMENT PURPOSES ONLY

SECTION 14 T.12N. R.10W. S.10N. BENTON COUNTY

1" = 400'

May 2 2002

REV: 02-15-20 CANC. 102 104 200 201 400 401 502 600T1 50C

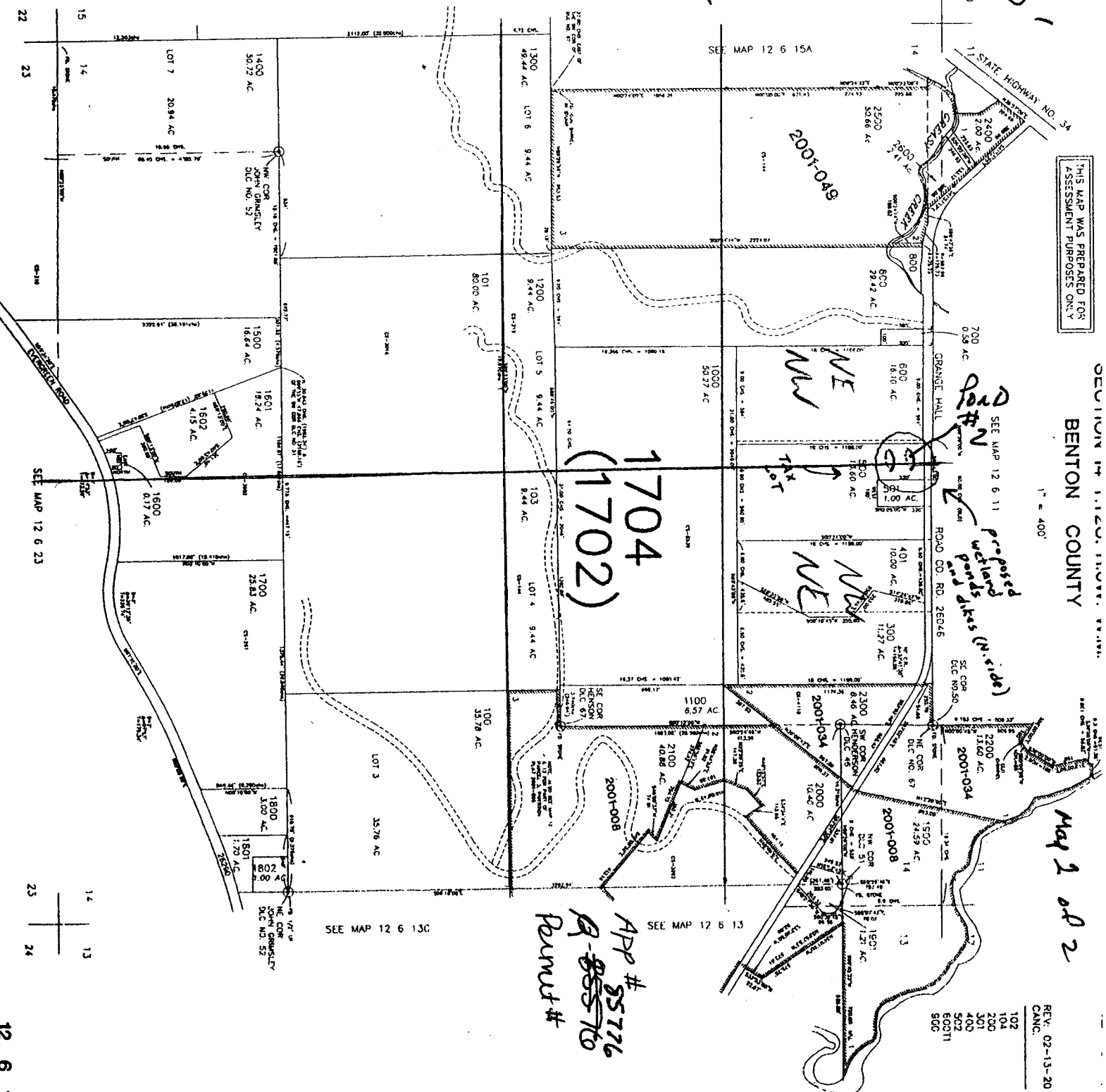
SEE MAP 12 6 15

SEE MAP 12 6 15A

SEE MAP 12 6 23

SEE MAP 12 6 13C

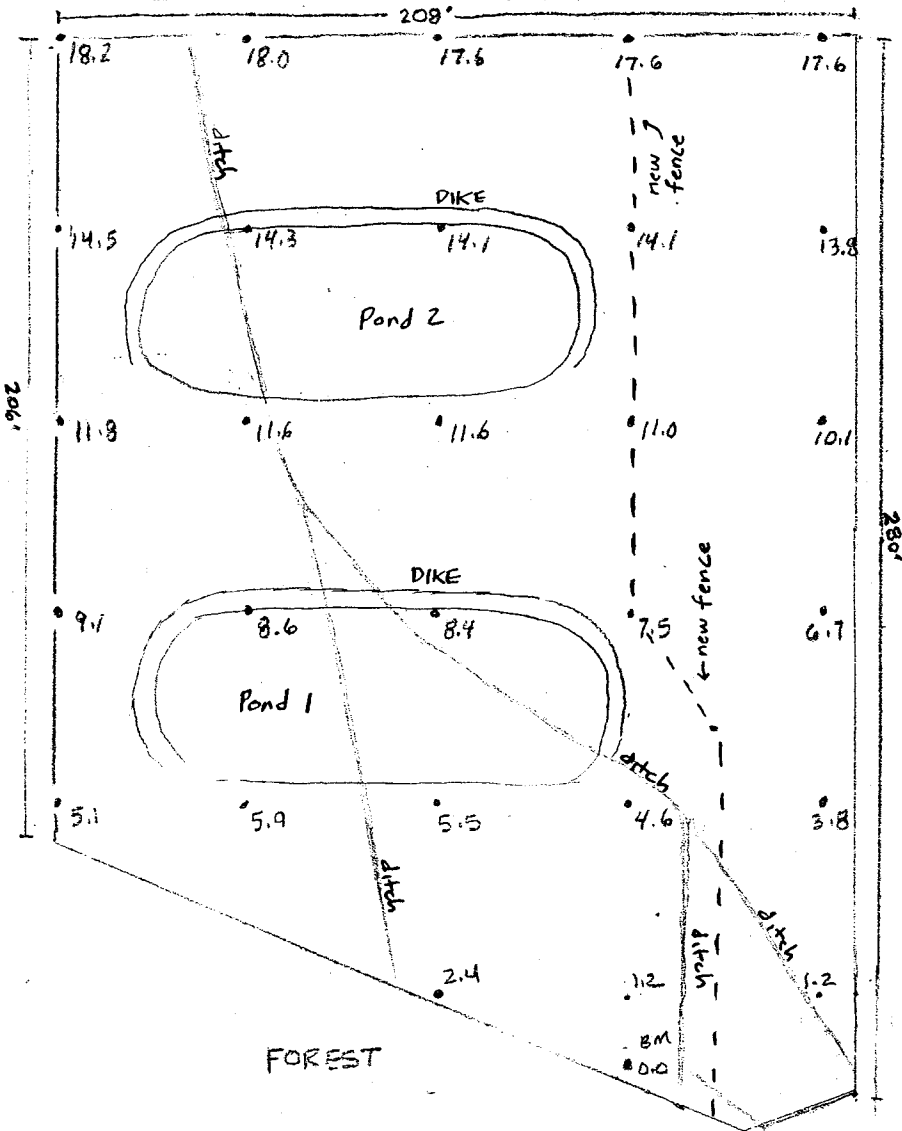
APP # 55776 A-85576 Permit #



NT

GRANGE HALL ROAD

Map 2 of 2

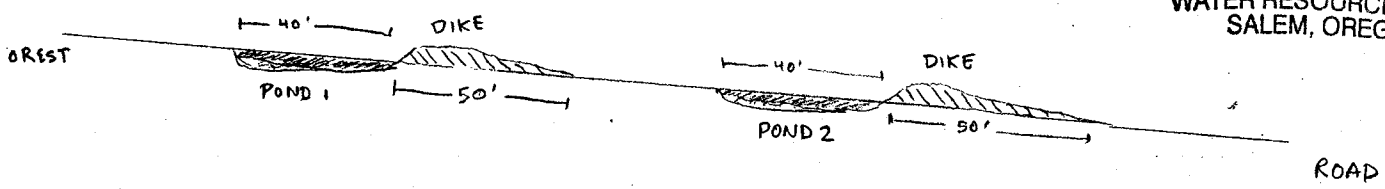


SCALE: 1" = 50 ft.

RECEIVED  
 APR 30 2003  
 WATER RESOURCES DEPT  
 SALEM, OREGON

APPLICATION: R-85776  
 PERMIT: R-13744

RECEIVED  
 APR 23 2003  
 WATER RESOURCES DEPT  
 SALEM, OREGON



CROSS-SECTIONAL VIEW (following western ditch line)