

water storage Application

Tax Lot : 1500 ~~1600~~

MAP 1 of 2

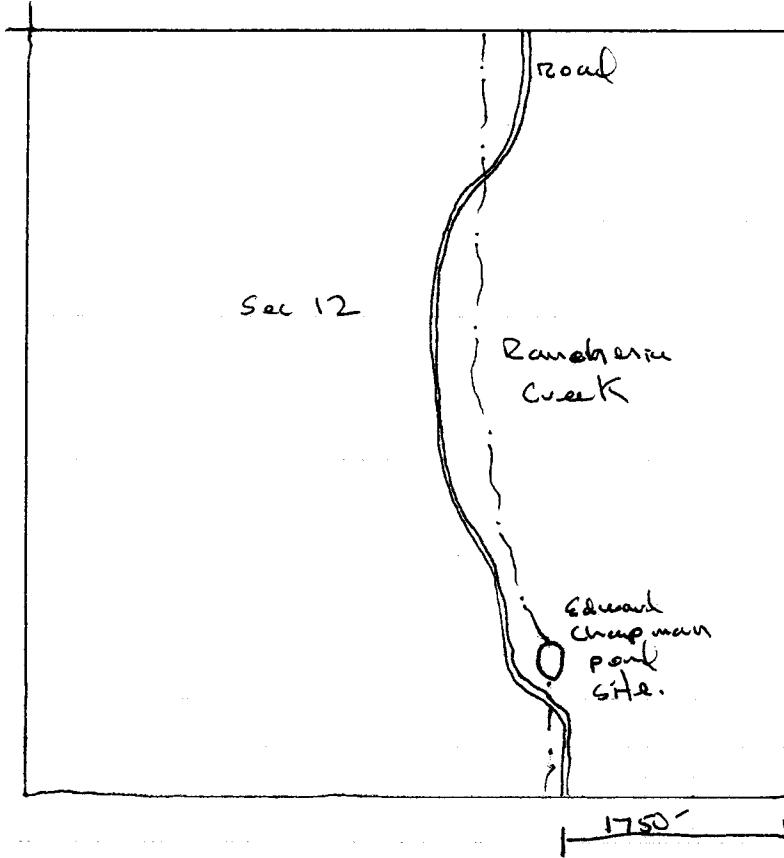
Legal : SW 1/4 of NE 1/4 and W 1/2 of SE 1/4 Sec 12  
T11S R9 39 E

Coordinates : N 44° 37' 0.56"  
W 117° 52' 36.46"

Name : Edward Chapman Pond.  
Sec 1

Sec 2

Sec 11



N 1

4" = 1 mile (5280')

pond location : 1750' west and 725' north  
of South East Corner of Sec 12.

**RECEIVED**

JUN 19 2003

WATER RESOURCES DEPT.  
SALEM, OREGON

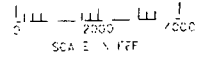
app no R-85657 Permit no. R-13747

MAP 2 of 2

RECEIVED

JUN 19 2003

WATER RESOURCES DEPT.  
SALEM, OREGON

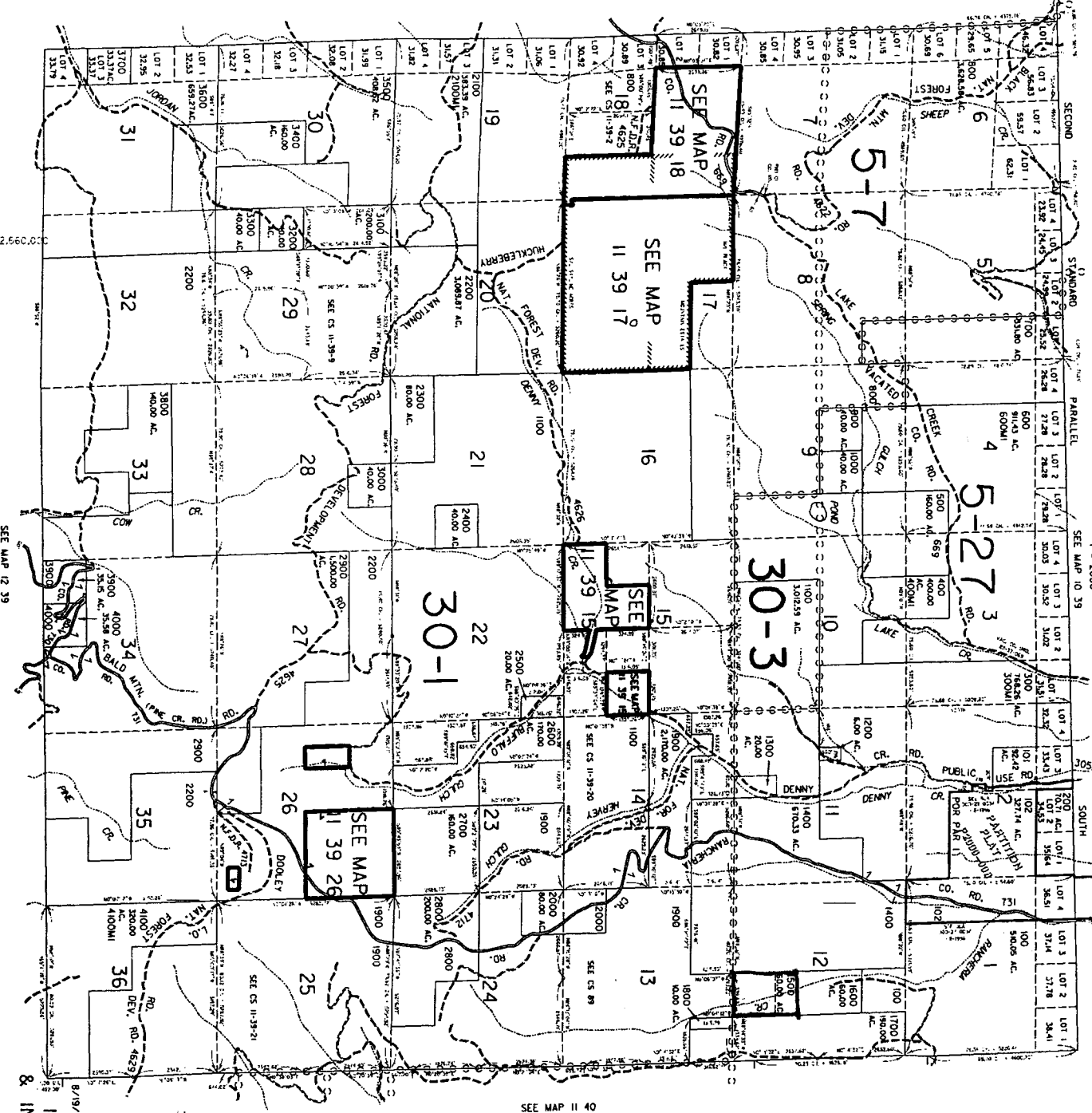


SEE MAP 11 38

THIS MAP WAS PREPARED FOR  
ASSESSMENT PURPOSE ONLY

T.IIS. R.39E. W.M.  
BAKER COUNTY

11 39  
& INDEX



2,560,000

SEE MAP 12 39

SEE MAP 11 40

Revised  
8/19/2002, DBJ  
11 39  
& INDEX

340,000