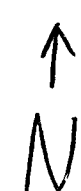


1' = 660'  
 39 S 2W  
 Section 6  
 Tax Lot 1600

"Upper Pond"  
 2500' NORTH  
 2000' WEST  
 of  
 SE corner of  
 section 6,  
 39 S, 2W

SE  
 corner of  
 section 6,  
 39 S, 2W



**RECEIVED**

JUN - 2 2003

WATER RESOURCES DEPT  
 SALEM, OREGON

**FR-160**

app no R-85628 permit no R-13749