

Map 1 of 2

T41S R13W
NE 1/4 NE 1/4
Sec 26

RECEIVED

MAY 13 2003

WATER RESOURCES DEPT.
SALEM, OREGON

23 | 24
26 | 25

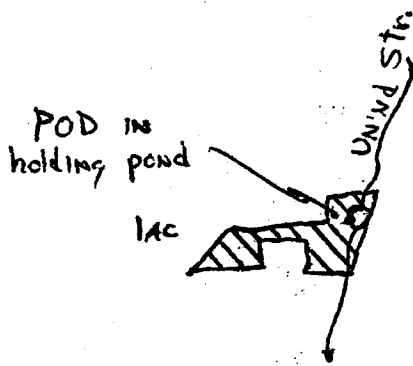
330'

RECEIVED

JUN 21 1982

WATER RESOURCES DEPT.
SALEM, OREGON

790'



W + E

SCALE
1" = 400'

Application No. 63692
Permit No. 47128

App # R-85597
Permit # R-13751

THIS MAP WAS PREPARED FOR ASSESSMENT PURPOSE ONLY

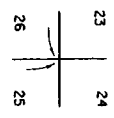
NE1. SEC. 26 T.41S. R.13W. W.M. CURRY COUNTY

1" = 200'

11 13 26A

CANCELLED NOS. 100

1/4 COR.



GEN. SEC.

SEE MAP 41 13 26

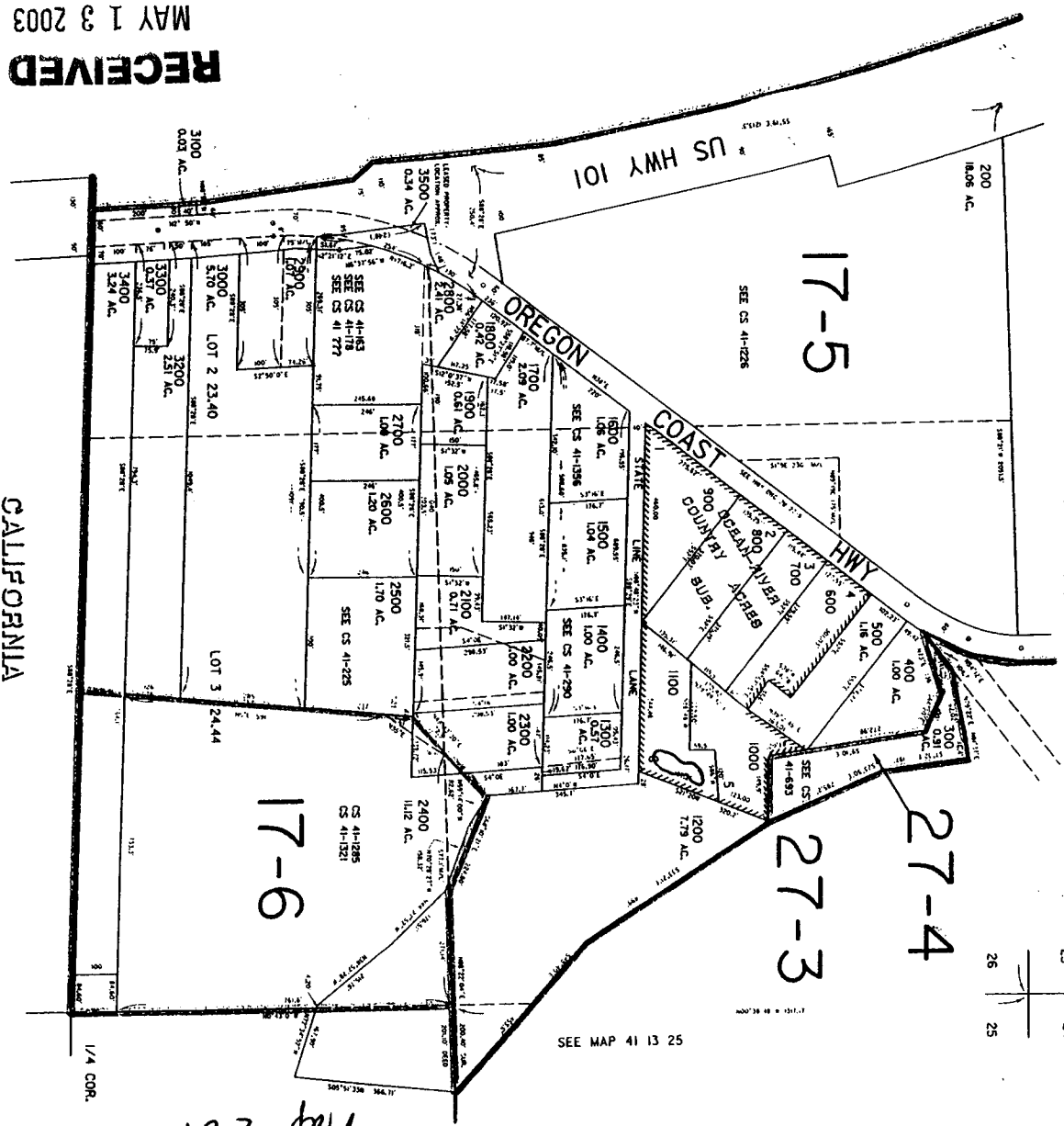
SEE MAP 41 13 25

WATER RESOURCES DEPT. SALEM, OREGON

MAY 1 3 2003

RECEIVED

CALIFORNIA



app # R-85597
Permit # R-13751

Map 2 of 2

11 13 26A