

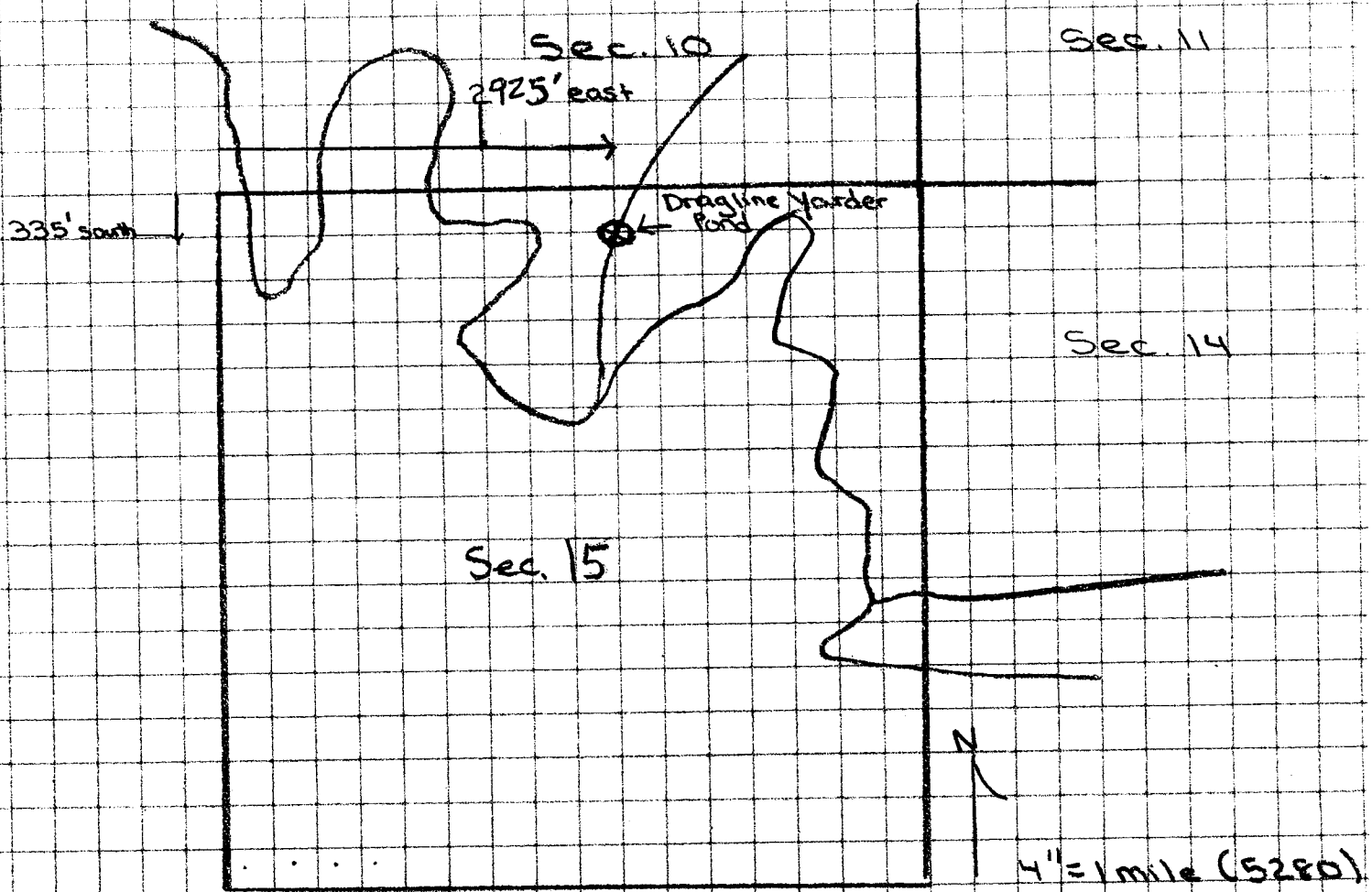
# Heffernan Water Storage Application

Tax Lot: 2200

Legal: NE 1/4 NW 1/4, Sec. 15, TWP 6S, RGE 38E

Coordinates: N 45° 02' 59"  
W 118° 02' 41"

Name: Dragline Yarder Pond



Pond Location: 2925' east  
335' south

From the NW Section corner of 15

app # R-85580  
Print # R-13764

**RECEIVED**

MAY 01 2003

WATER RESOURCES DEPT  
SALEM, OREGON