

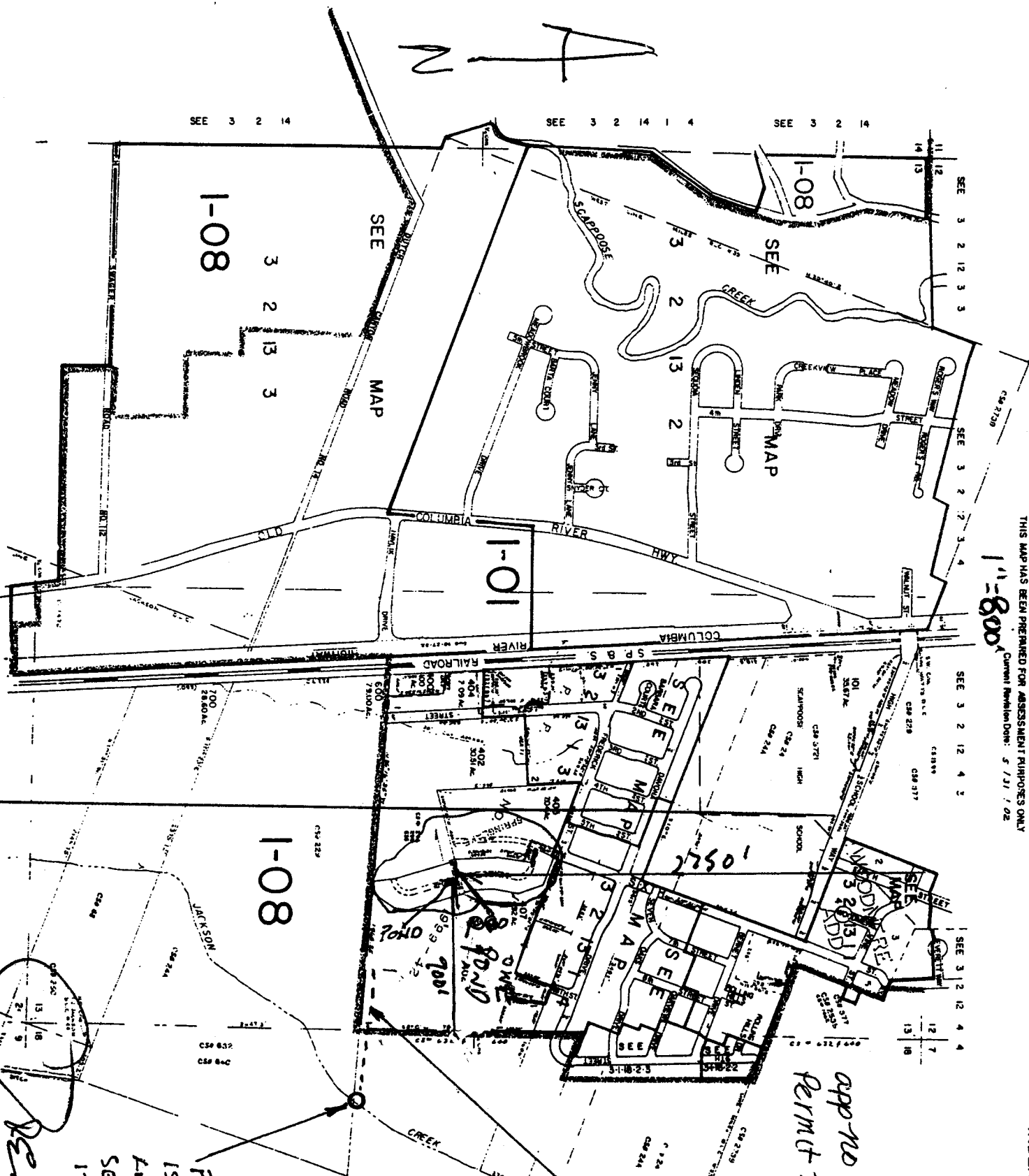
SECTION 13 T.3N. R.2W. W.M.

COLUMBIA COUNTY
THIS MAP HAS BEEN PREPARED FOR ASSESSMENT PURPOSES ONLY

1" = 800'

Current Revision Date: 5/31/02

3 2 13
INDEX



RECEIVED
JUL 11 2003
WATER RESOURCES DEPT
SALEM, OREGON

900' W Ditch
TO PONDS IN
TL 3-2-13-402

APP NO R-85703
PERMIT NO R-18778

POINT OF DIVERSION
IS LOCATED 3340'S.
AND 400'E FROM
SECTION CORNER 7,
12,13,18.

REF CORNER