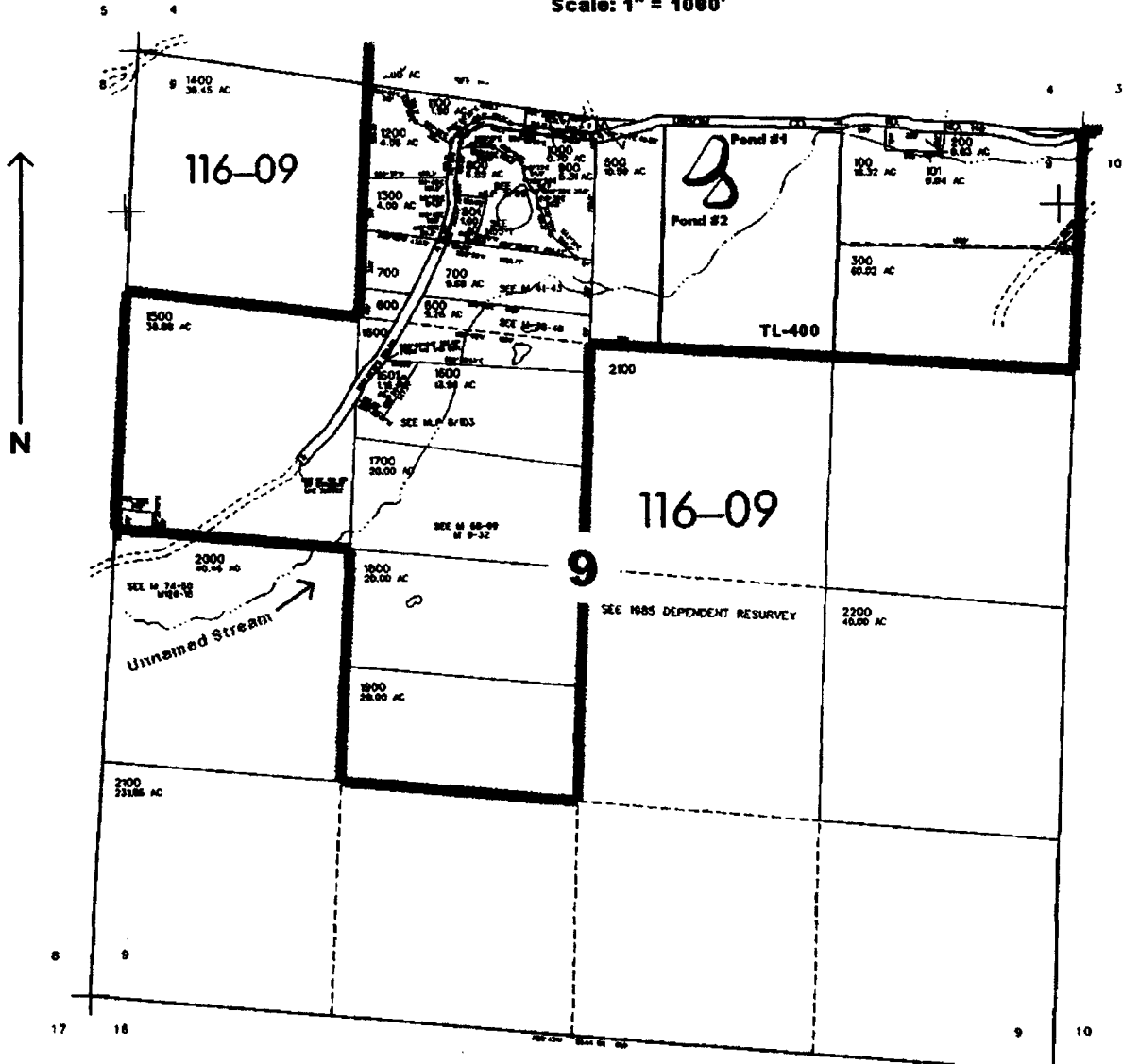


SEC. 9 T.28S. R. 7W W.M.
DOUGLAS COUNTY

Scale: 1" = 1000'



Dams located:

Pond #1: 200 ft. S. and 2000 ft. W. }

→ Pond #2: 400 ft. S. and 1950 ft. W. } from the NE corner of Sec. 9

*app no R-85692
permit no R-13780*

RECEIVED
JUL 07 2003
WATER RESOURCES DEPT.
SALEM, OREGON