

JUL 11 2003  
 WATER RESOURCES DEPT  
 SALEM, OREGON

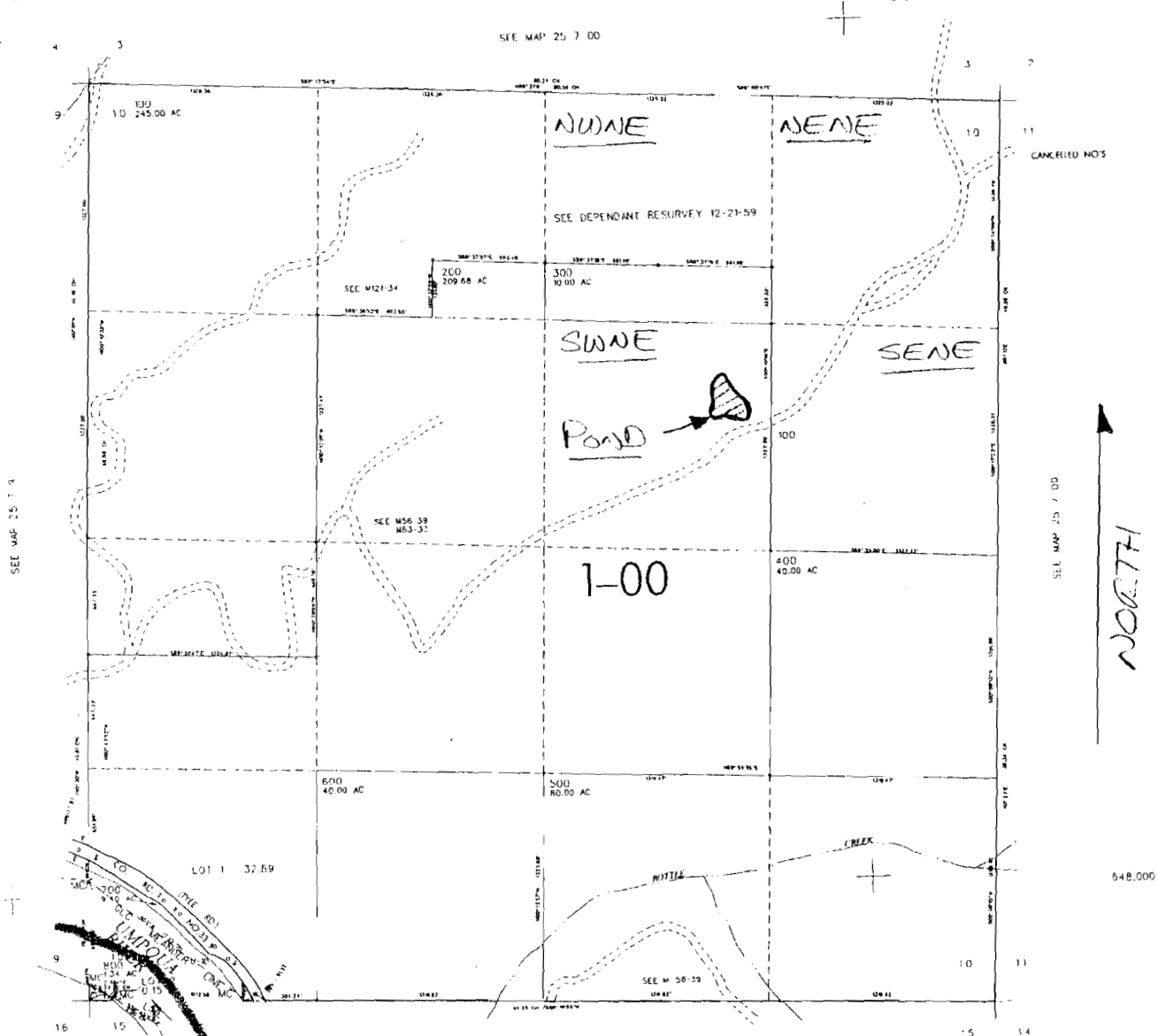
25 7 10

THIS MAP WAS PREPARED FOR  
 ASSESSMENT PURPOSE ONLY

SEC. 10 T.25S. R. 7W W.M.  
 DOUGLAS COUNTY

REVISED ON  
 2-18-99

SEE MAP 25 7 00



SEE MAP 25 7 15

SCALE 1" = 1000'

POND IS LOCATED 1900' SOUTH  
 AND 1600' WEST OF NE CORNER  
 (SECTION) 10

APP NO R-85703  
 PERMIT NO R-13788