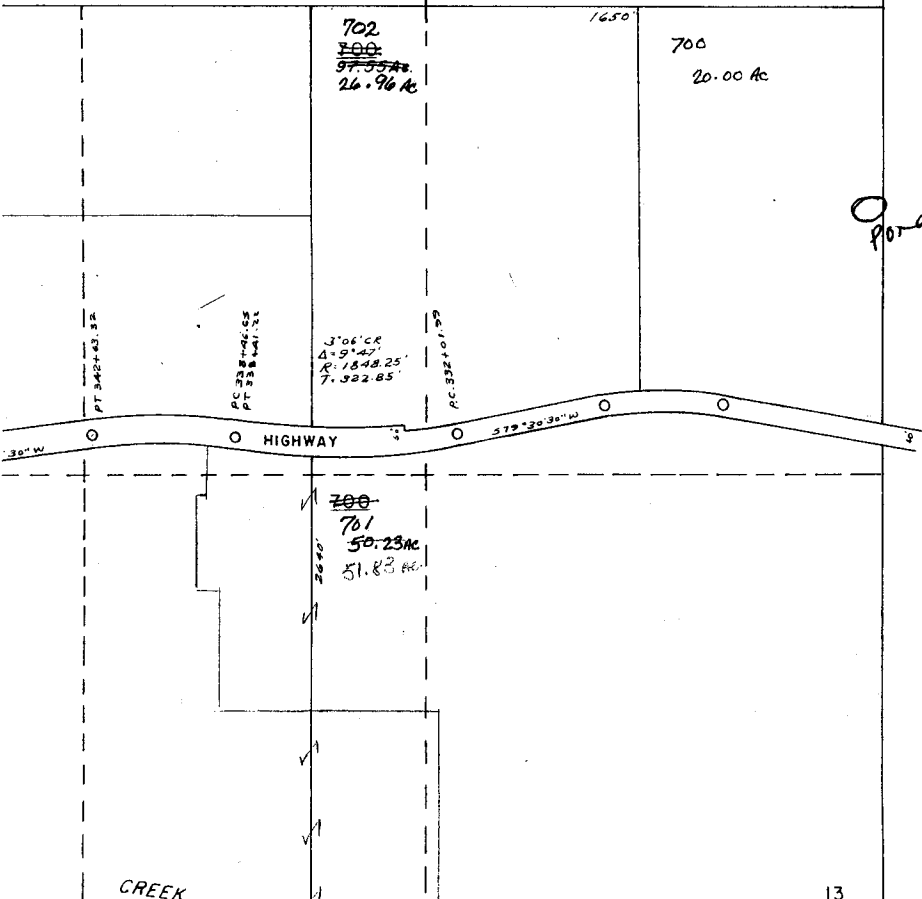


RECEIVED
JUN 06 2003
WATER RESOURCES DEPT.
SALEM, OREGON

600
40.00Ac

5

SEE MAP 35 6 18



Pond



POINT OF DIVERSION 1650
COMMON CORNERS
13, 18, 19, and 24
40' W & 2100' N

Scale 355-7N-13
1" = 400'

35 7 13

app. No. R-85634 Permit No. R-13812