

THIS MAP WAS PREPARED FOR  
ASSESSMENT PURPOSE ONLY

SW1/4 NW1/4 SEC. 20 T.27S. R. 5W W.M.  
DOUGLAS COUNTY

27 5 20BC  
ROSEBURG

1/16 COR.

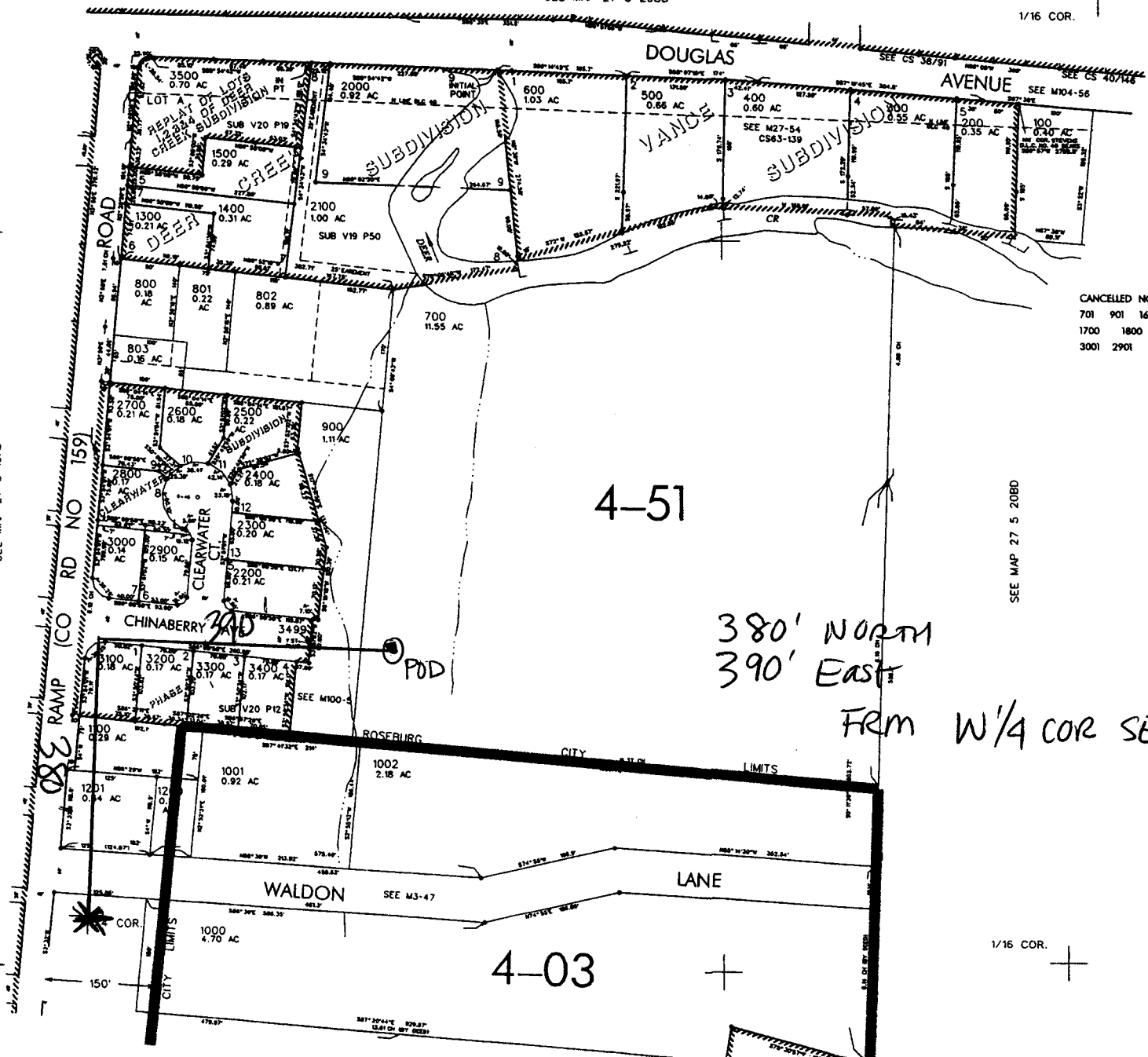
1"=100'

REVISED ON  
3-23-01

SEE MAP 27 5 20BB

1/16 COR.

1" = 200'



CANCELLED NO'S  
701 901 1600  
1700 1800 1900  
3001 2901

4-51

380' NORTH  
390' EAST

FRM W1/4 COR SEC 20

4-03

SEE MAP 27 5 20CB

27 5 20BC  
ROSEBURG

appno R-85758 permit No R-13821