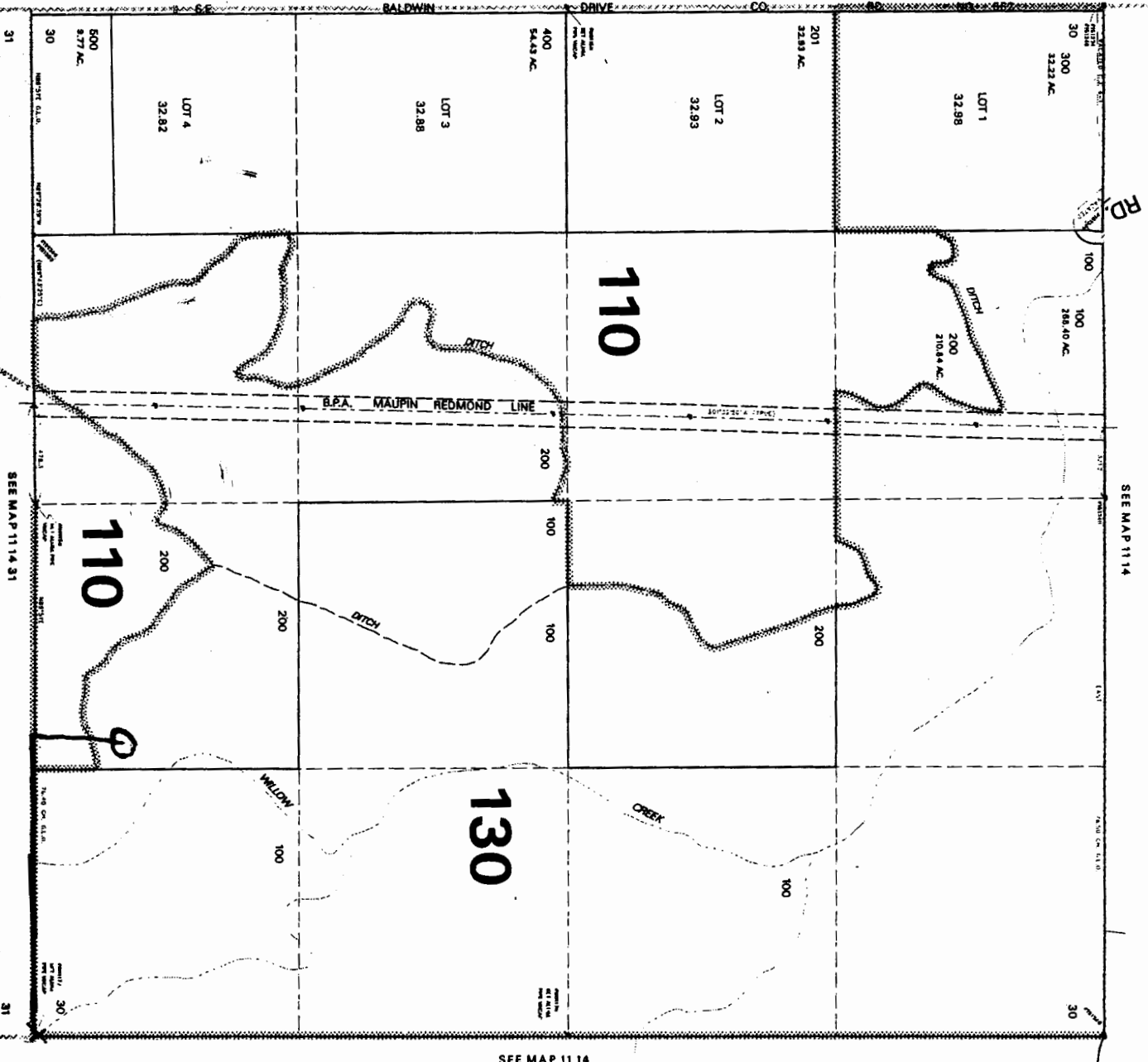


THIS MAP WAS PREPARED FOR ASSESSMENT PURPOSE ONLY

SECTION 30 T.11S. R.14E. W.M. JEFFERSON COUNTY

1" = 800'

SEE MAP 11 14 25



1470' west then
450' north of

app #
R-85494
Permit # R-14013
R-13870

RECEIVED

MAR 13 2003

WATER RESOURCES DEPT.
SALEM, OREGON

RECEIVED

MAR 03 2003

WATER RESOURCES DEPT.
SALEM, OREGON

11 14 30'