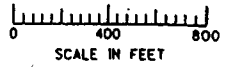


THIS MAP WAS PREPARED FOR ASSESSMENT PURPOSE ONLY



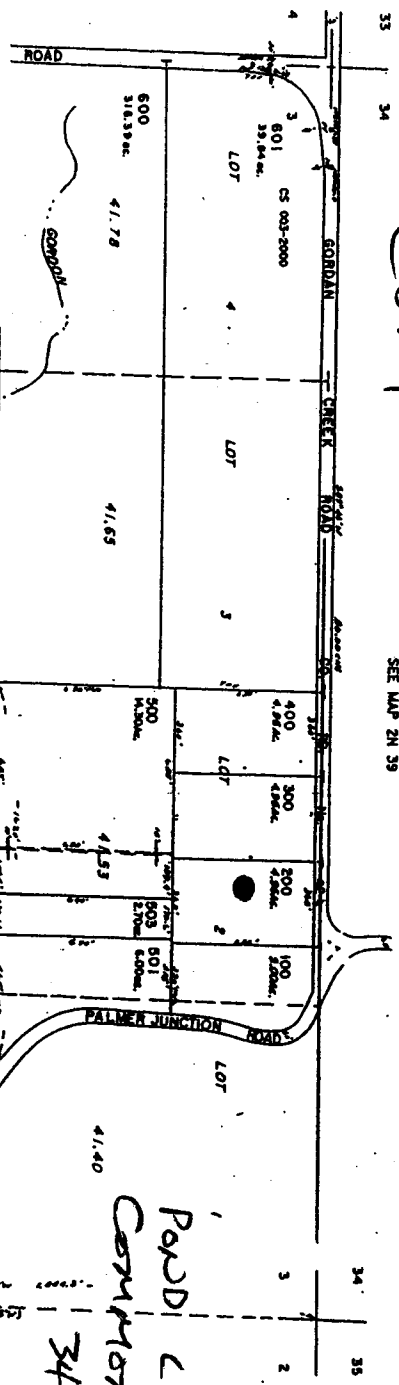
SECTION 2 1. IN. RAYL. W.M. UNION COUNTY

WORK COPY

SEE MAP 24 39

1" = 800 FEET

IN 39 3
CANCELLED NO. 502 504 1500



Road will be where
Red Dot is on
Tax lot 200
5 acre Appurtenances
1" = 800 FEET

23-4

ROAD LOCATED FROM
COMMON SECTIONS
34, 35, 2, 3

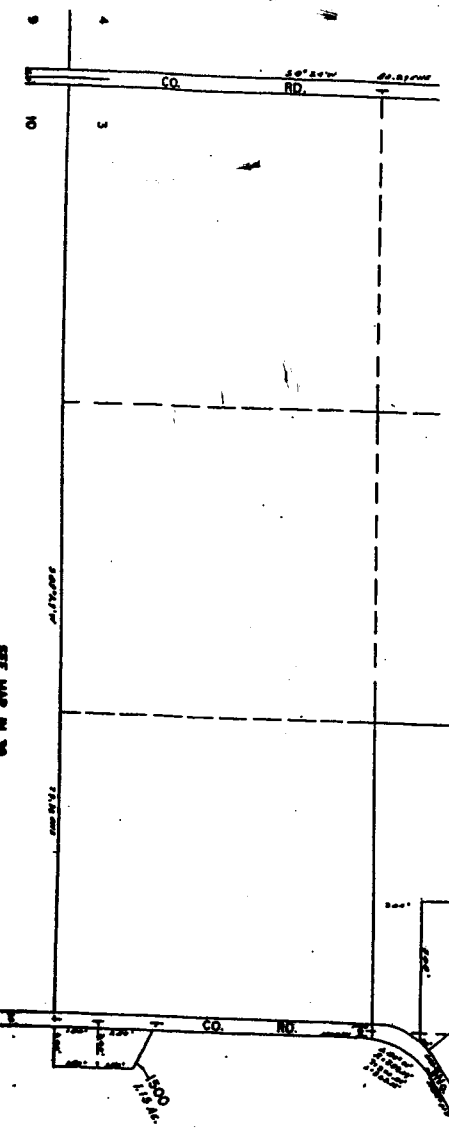
1780 FT WEST
320 FT SOUTH

RECEIVED
OCT 27 2003
WATER RESOURCES DEPT.
SALEM, OREGON

appho R-85859
Permit no R-13885

AMERICAN ALSO
FURNISHED GPS
COORDINATES ON
PAC PLOT.

IN 39 3



Revised
3/14/01, SC
IN 39 3