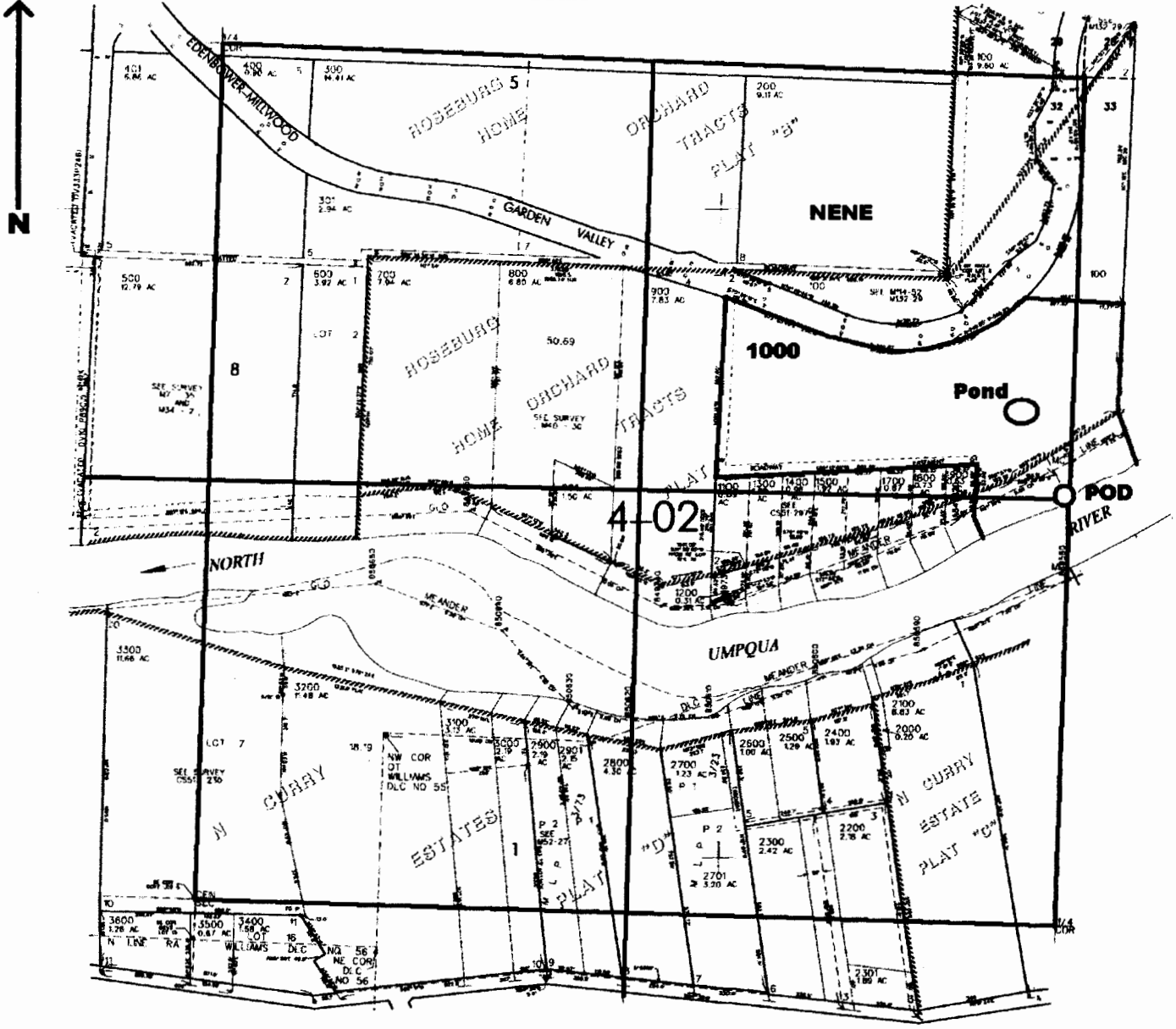


RECEIVED
 OCT 17 2003
 WATER RESOURCES DEPT
 SALEM, OREGON

NE¼ SEC. 32 T.26S. R.6 W W.M.
 DOUGLAS COUNTY
 Scale: 1" = 500'



POD located 1300 ft. S. and 20 ft. W. from the NE corner of Sec. 32

appno R-85854
 Permit NO R 13892

RECEIVED
 SEP 23 2003
 WATER RESOURCES DEPT
 SALEM, OREGON