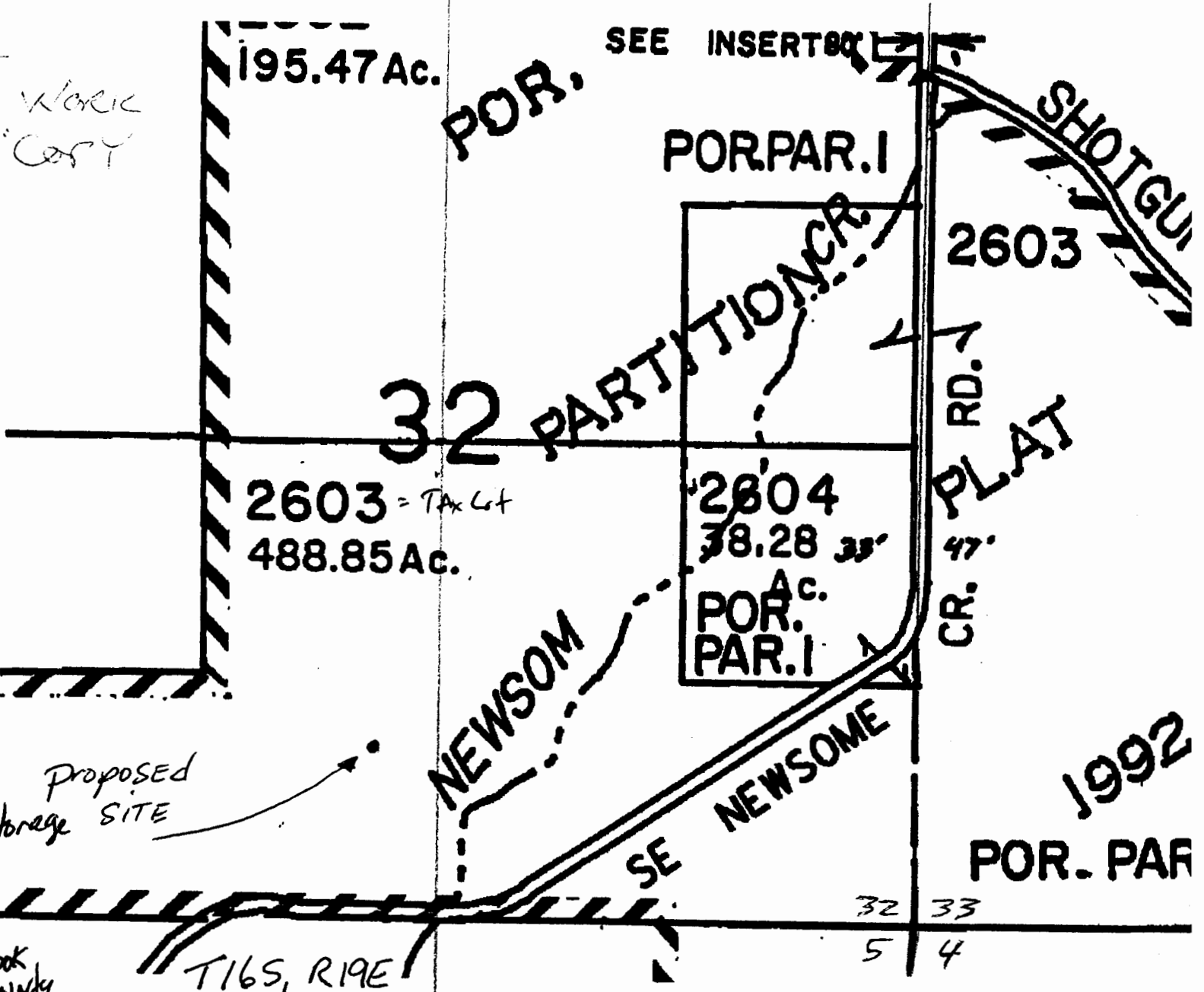


WORK COPY



Proposed Storage SITE

ok NMTy over by

T16S, R19E
TAX Lot # 2603

RESERVOIR LOCATED FROM
COMMON SECTIONS 4, 5, 32, 33
950 FEET NORTH
3009 FEET WEST

SCALE:

1" = 880'
CHANGED
1" = 800 FEET



RECEIVED

appno R-85886 Permit No R-13916

T.16S. R19E. W.M.
CROOK COUNTY

1" = 2000'

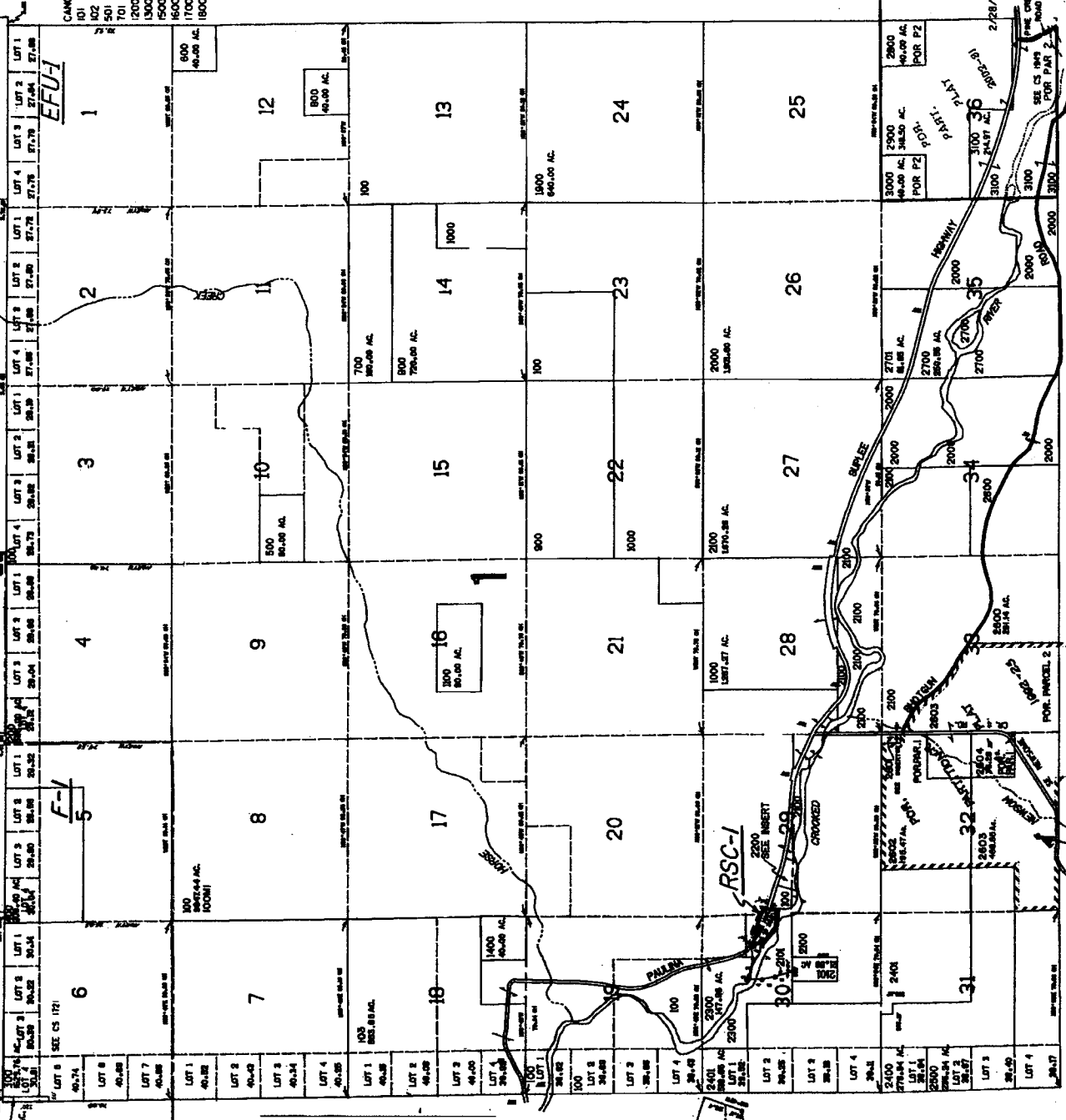
16 19
& INDEX

THIS MAP WAS PREPARED FOR
ASSESSMENT PURPOSE ONLY

SEE MAP 15 19

CANCELLED NO.
101
102
501
701
1200
1300
1500
1600
1700
1800

SEE MAP 20



SCALE
1" = 4693'

proposed site

SEE MAP 17 19

RECEIVED

DEC 04 2003

WATER RESOURCES DEPT
SALEM, OREGON

APPRO R-85886 Permit No R-13916