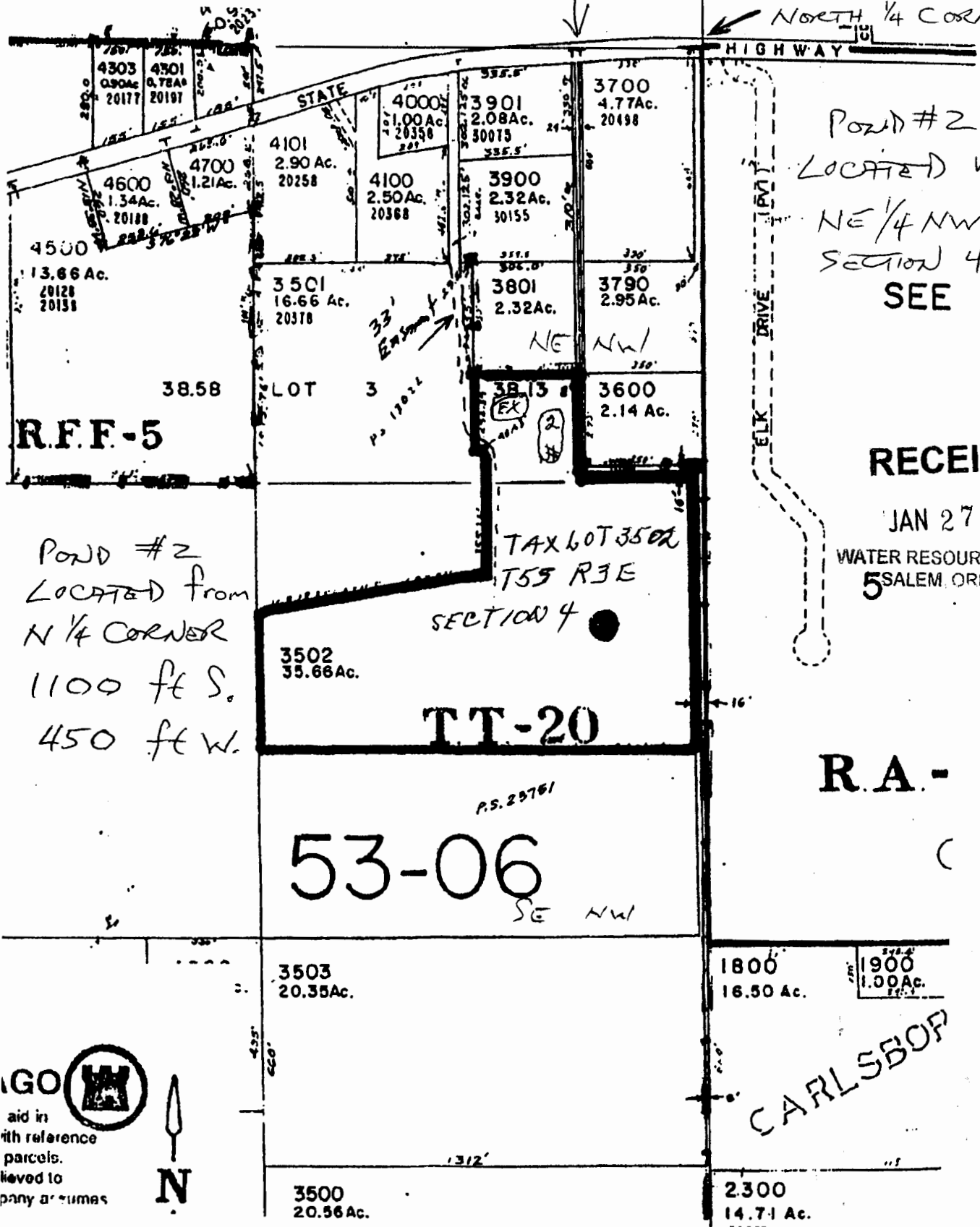


App R-85922  
PLAT MAP  
LYNNMARIE LN

CORRECTED SCALE  
APPROX  
1" = 400 FT  
NORTH 1/4 CORNER.



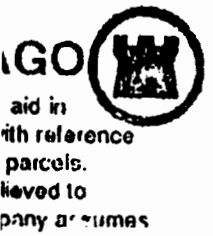
POND #2  
LOCATED WITHIN  
NE 1/4 NW 1/4  
SECTION 4  
SEE

RECEIVED

JAN 27 2004

WATER RESOURCES DEPT  
5 SALEM, OREGON

POND #2  
LOCATED FROM  
N 1/4 CORNER  
1100 FT S.  
450 FT W.



EXISTING  
#1 POND  
P-179714

APPLICATION POND #2

Application # R 85922  
Permit # R 13924