

MAP WAS PREPARED FOR PERMIT PURPOSE ONLY

SECTION 21 T4S R4W W.M.  
YAMHILL COUNTY

FILE COPY

4 4 2  
& INDE

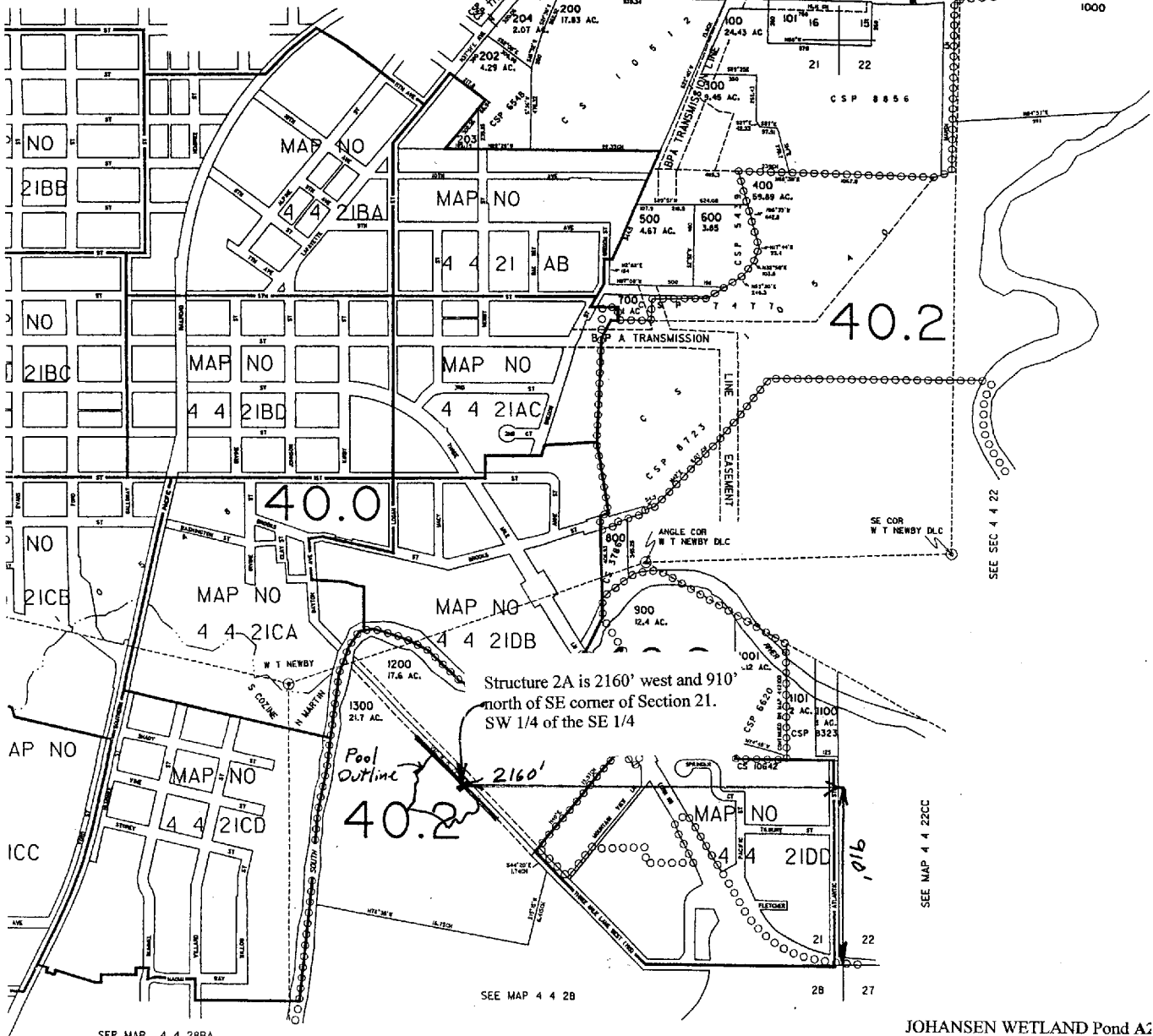
4 16CC

SEE MAP 4 4 16CD

SEE MAP 4 4 16DC

SEE MAP 4 4 16

CANCELLED  
201  
1000



JOHANSEN WETLAND Pond A2  
T4N, R4W, SECTION 21  
Tax lot 1300  
Page 1/1

RECEIVED  
MAR 02 2004  
WATER RESOURCES DEPT  
SALEM OREGON

Permit no. R 13971  
App No R-85956