

RECEIVED

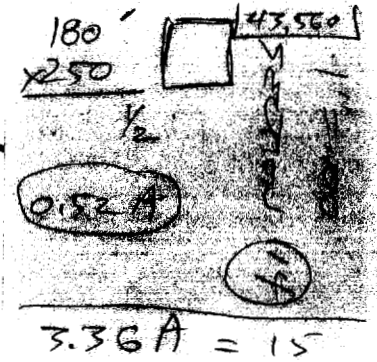
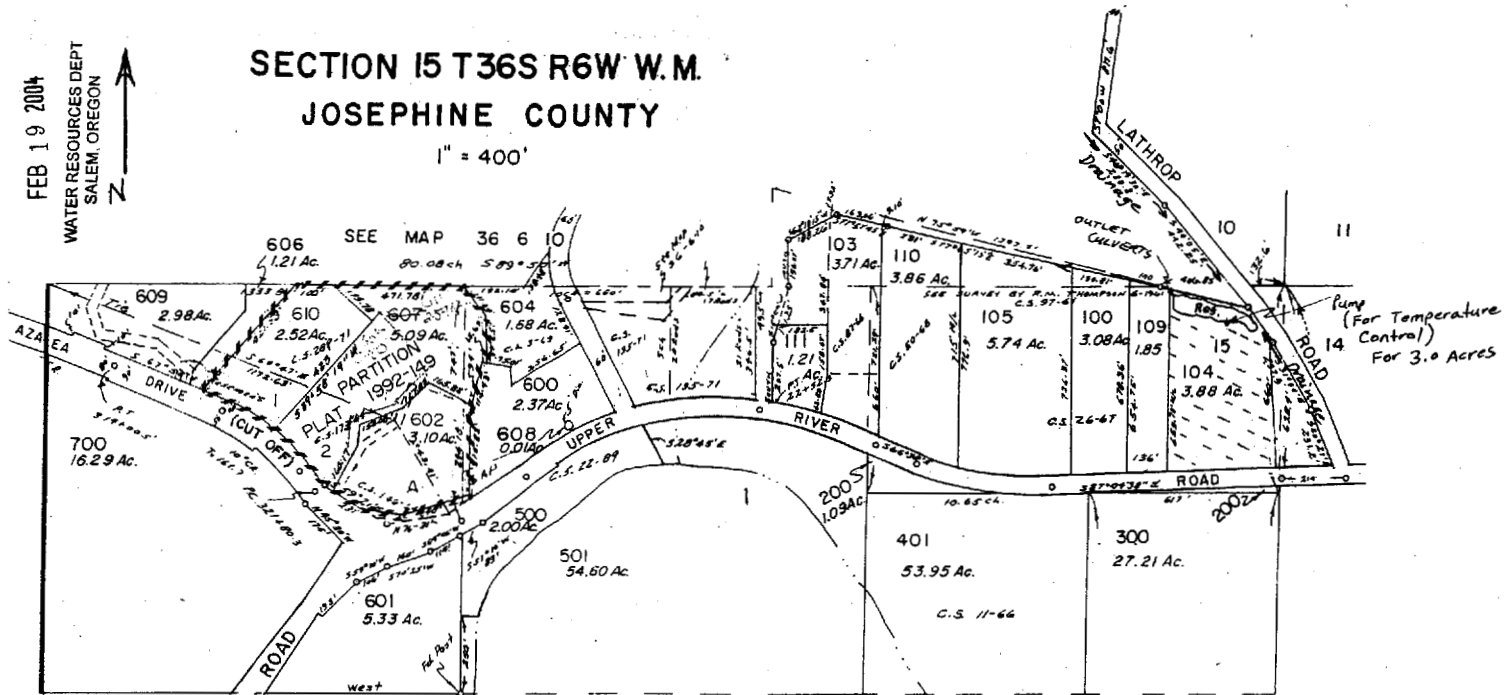
FEB 19 2004

WATER RESOURCES DEPT
SALEM, OREGON



SECTION 15 T36S R6W W.M. JOSEPHINE COUNTY

1" = 400'



Pump Located
110ft. S and 180ft. W
From NE Cor. Section 15
T36S R6W W.M.
IN NE 1/4 NE 1/4

Outlet Culverts
20ft S. And 360ft W
From NE COR Section 15
T36S R6W W.M.
IN NE 1/4 NE 1/4

Annex E-95941