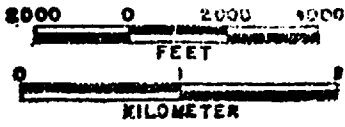


SCALE 1:48000

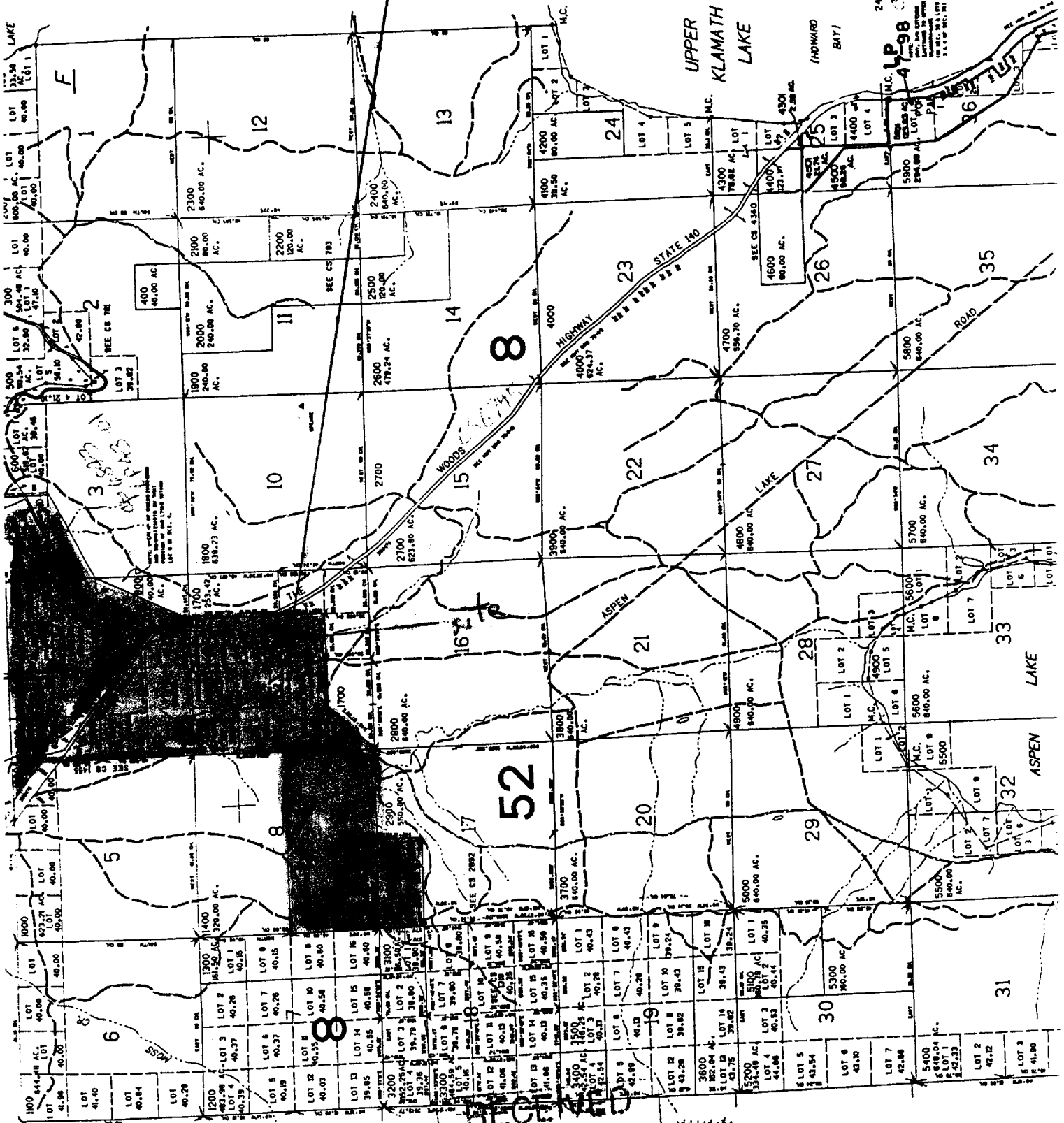


site

well
pond

land owned by Cameron (part)

land owned by U.S. Timber



RECEIVED
JAN 30 2004
WATER RESOURCES DEPT
SALEM, OREGON

RECEIVED
JUL 12 1999
DEPARTMENT OF REVENUE
STATE OF OREGON
App No. R-85924