

REPAIRED FOR
PROPOSE ONLY

SECTION 20 T.2N. R.1W. W.M.
MULTNOMAH COUNTY

2N 1W 20
& INDEX

1" = 600'
SEE MAP 2N 1W 17 SEE MAP 2N 1W 17D

RECEIVED

MAR 29 2004

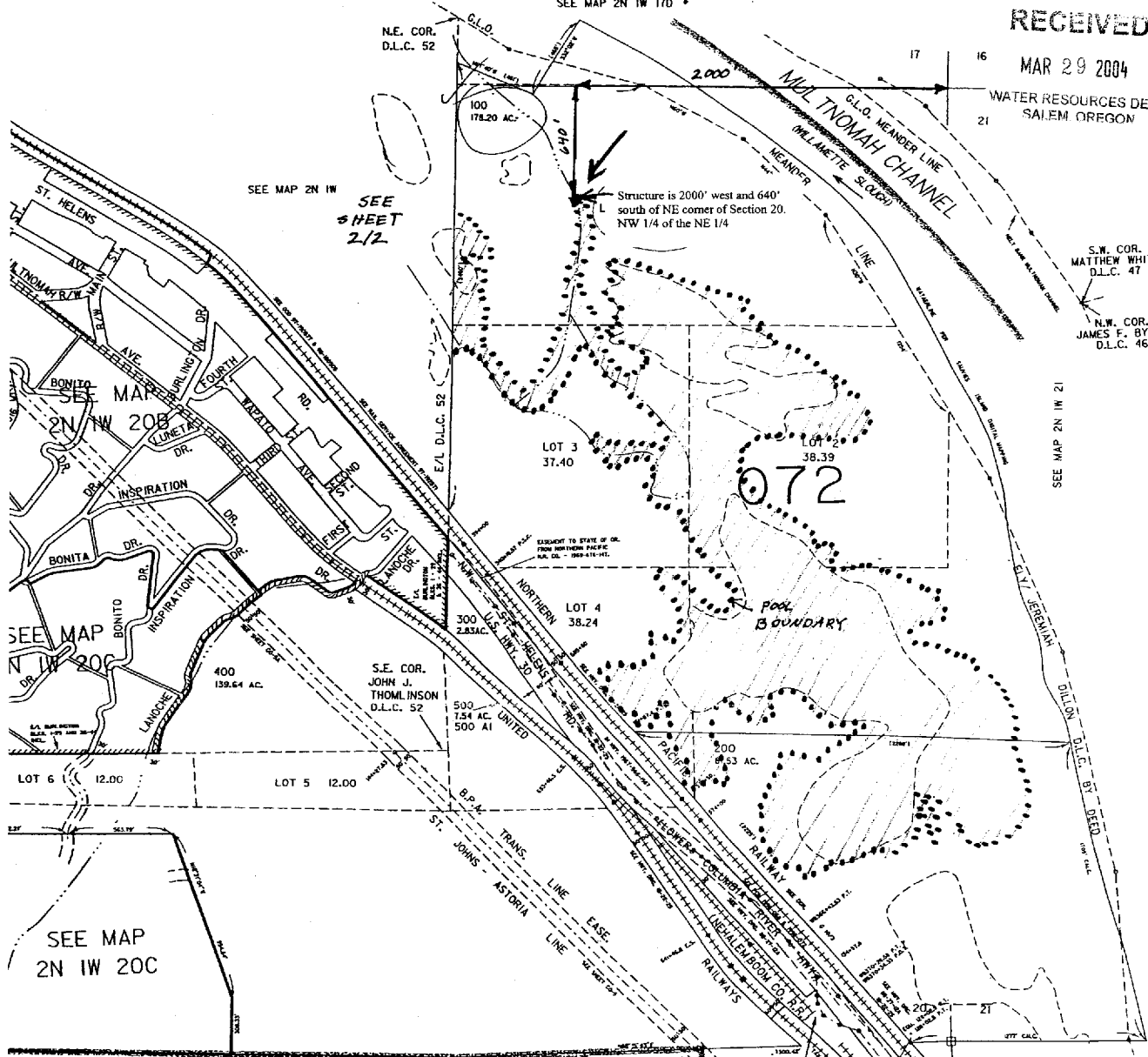
WATER RESOURCES DEPT
SALEM OREGON

S.W. COR.
MATTHEW WHITE
D.L.C. 47

N.W. COR.
JAMES F. BYBEE
D.L.C. 46

SEE MAP 2N 1W 21

2N 1W 20
& INDEX



SEE MAP 2N 1W
SEE SHEET
2/2

Structure is 2000' west and 640'
south of NE corner of Section 20.
NW 1/4 of the NE 1/4

Pool
BOUNDARY

SEE MAP
2N 1W 20C

SEE MAP 2N 1W 29

NOTE:
T.V.F. & R. =
TUALATIN VALLEY FIRE & RESCUE