

NW1/4 SW1/4 SEC.07 T7S R2W WM, MARION COUNTY

7 2W 07CB

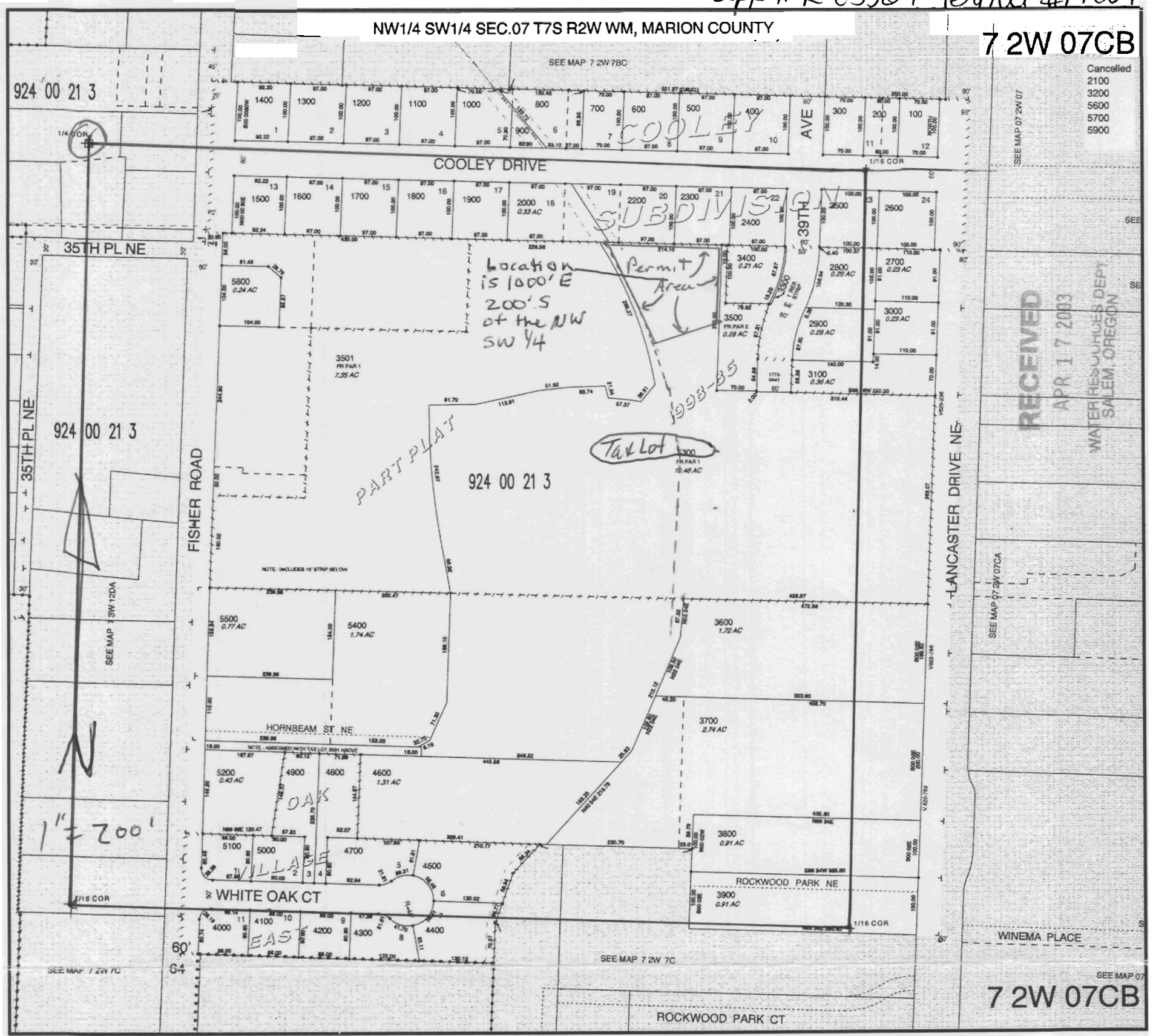
Cancelled
2100
3200
5600
5700
5900

T-OF-WAY
T-OF-WAY

1/2 SEC
OR



2003



RECEIVED
APR 17 2003
WATER RESOURCES DEPT
SALEM, OREGON

SEE MAP 07 2W 07CA

SEE MAP 07
7 2W 07CB

1000' E of 1/4 corner and
220' S of 1/4 corner