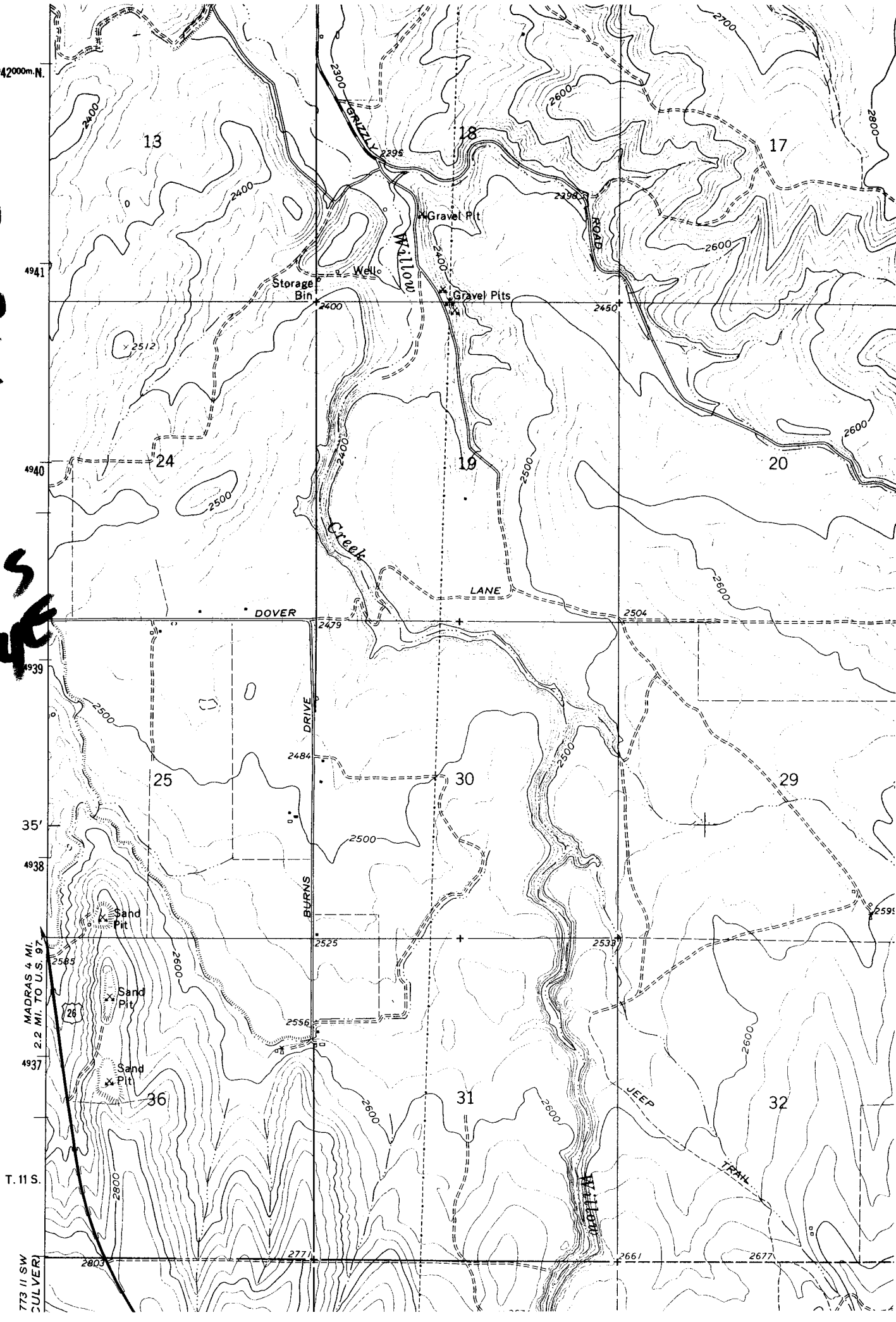


**Bucks Butte  
7 1/2 QUARTS  
THIS  
RIDGE**

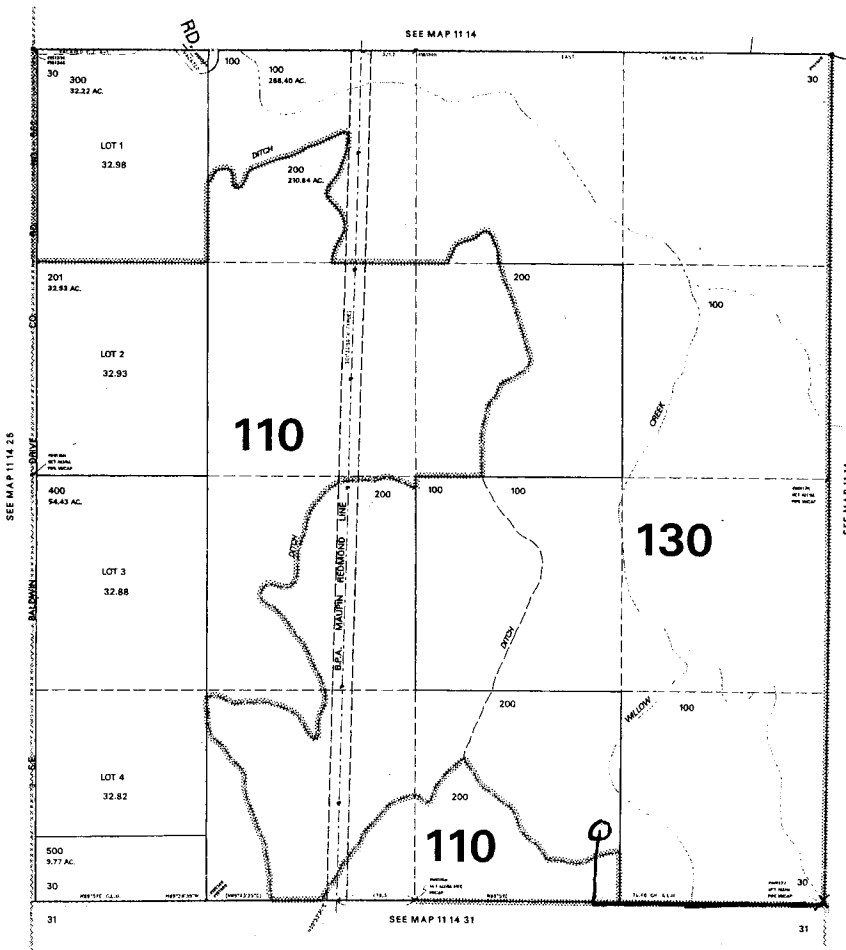


THIS MAP WAS PREPARED FOR ASSESSMENT PURPOSE ONLY

SECTION 30 T.11S. R.14E. W.M. JEFFERSON COUNTY

11 14 30'

1" = 800'



**RECEIVED**  
MAR 0 3 2003  
WATER RESOURCES DEPT.  
SALEM, OREGON

**RECEIVED**  
MAR 1 3 2003  
WATER RESOURCES DEPT.  
SALEM, OREGON

app #  
R-85494  
Permit # R-14013

1470' west then  
450' north of  
PLS marker  
11 14 30'